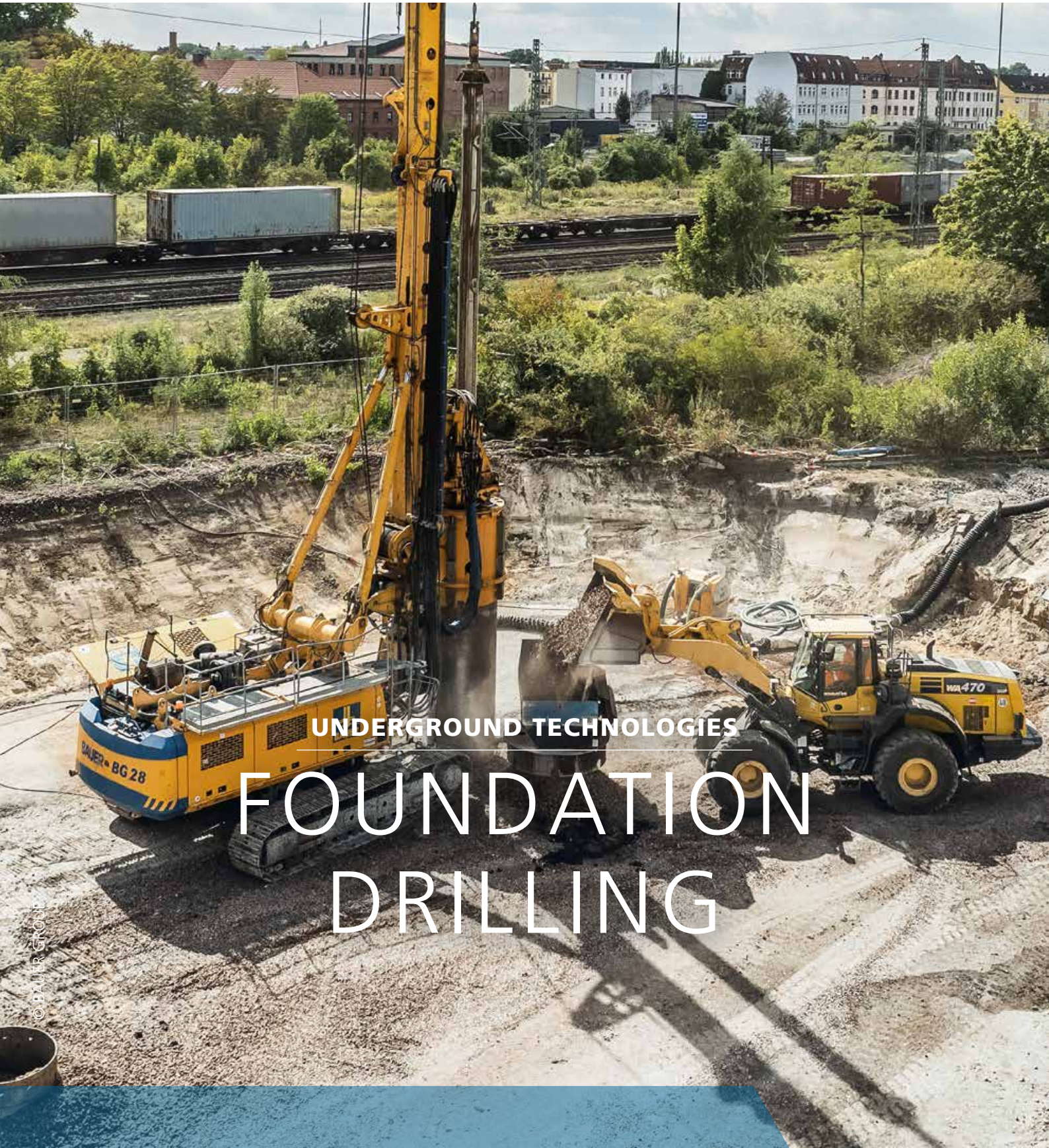




MADE IN GERMANY



UNDERGROUND TECHNOLOGIES

FOUNDATION DRILLING

© 2019 SIMON GROUP





**UNDERGROUND
TECHNOLOGIES**

- FOUNDATION DRILLING
- MINING
- TRENCHING
- TUNGSTUDS
- DRUM CUTTERS

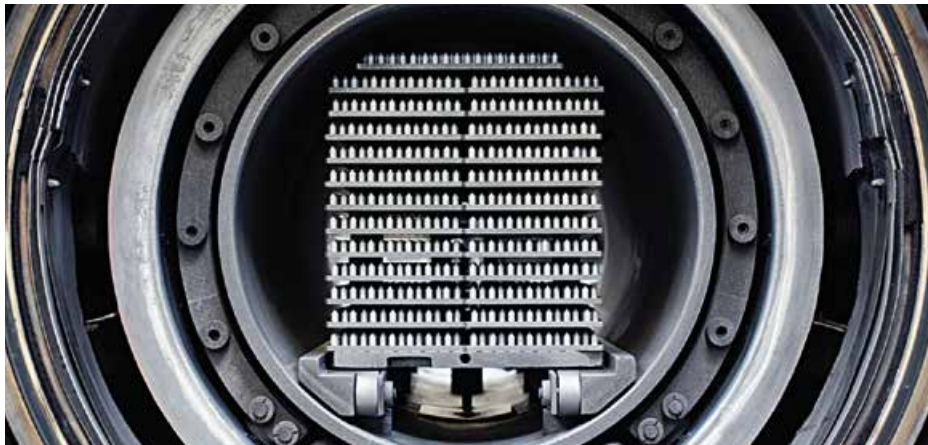


IN USE WORLDWIDE

TUNGSTEN CARBIDE AND STEEL

Steel and carbide are two materials with totally different expansion coefficients when subjected to heat. Nevertheless, it is of steel and tungsten carbide that our tools are made, with tungsten carbide for the wear-resistant tip, and steel for the tool shank. Since tools reach high temperatures during use, extreme tensile stresses are generated. These stresses are absorbed by a special brazing material that joins the tungsten carbide tip to the steel section.

We have developed our own methods and systems for this brazing process, which is carried out on fully automated machines with the process covered in an inert protective gas. Manufacturing parameters are fully monitored and documented to ensure consistent quality. Afterwards, brazing shear strengths are checked to ensure that our "Masters of the construction site" lose no time due to broken tools!



BETEK HIGH-TECH TOOLS



1

CUSTOMER SERVICE

- Efficient, customised solutions based on flexible structures
- Personalised, quick response to customer requirements



2

RESEARCH & DEVELOPMENT

- Quick creation of samples and prototypes
- Competitive pricing thanks to close cooperation with all production units



3

TUNGSTEN CARBIDE MANUFACTURING

- High-purity raw materials are used for high strength
- Consistently high, pore-free tungsten carbide quality through precise process control thanks to years of experience and know-how



4

SOLDERING PRODUCTION UNIT

Production facilities and processes specially developed to perfection by experts in the combination of tungsten carbide and steel



5

AUTOMATION

Maintaining a competitive edge on the global market thanks to a high degree of automation and flexible manufacturing facilities



6

QUALITY ASSURANCE

Continuous quality testing of the entire manufacturing chain all the way up to the installation site, in conformity with DIN ISO 9001:2000 and DIN EN ISO 14001



7

TRAINING

User training courses at BETEK or on-site for sustainable, long-term commercial success and customer satisfaction



8

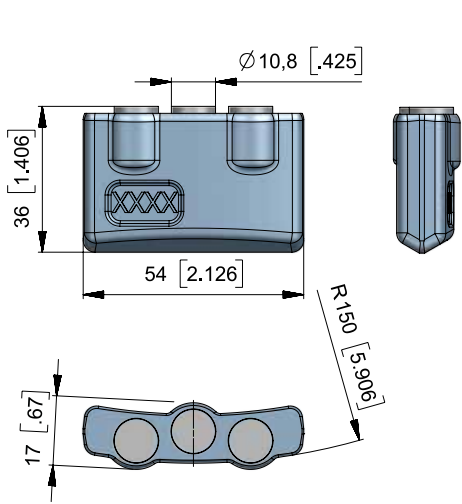
LOGISTICS

Quick responses thanks to:

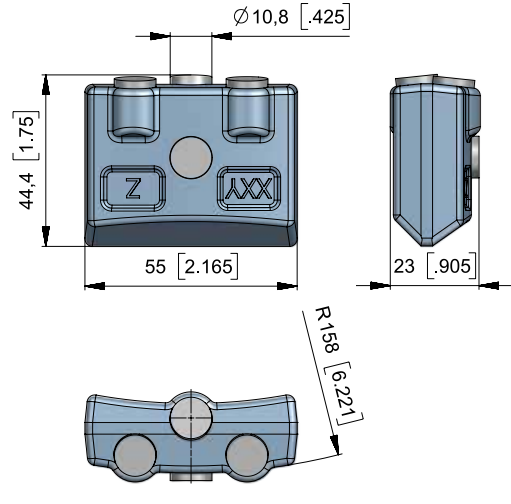
- the use of the very latest IT and enhanced logistics networking
- Standard products kept in stock

OUR KNOW-HOW COMBINED WITH STATE-OF-THE-ART PRODUCTION TECHNOLOGIES GUARANTEES THE FINEST QUALITY, MADE IN GERMANY

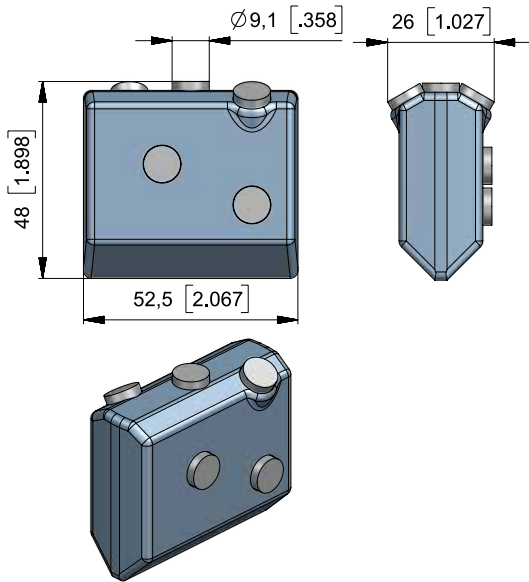
WELDING BARS



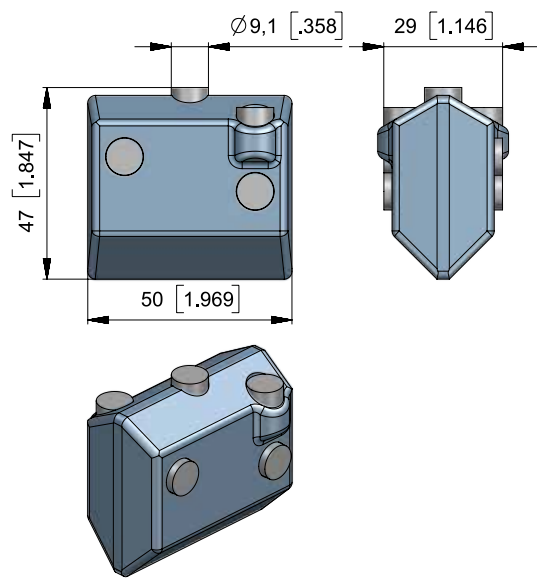
• **BA12**
BA55-17/11/R



• **BA13**
BA55-22

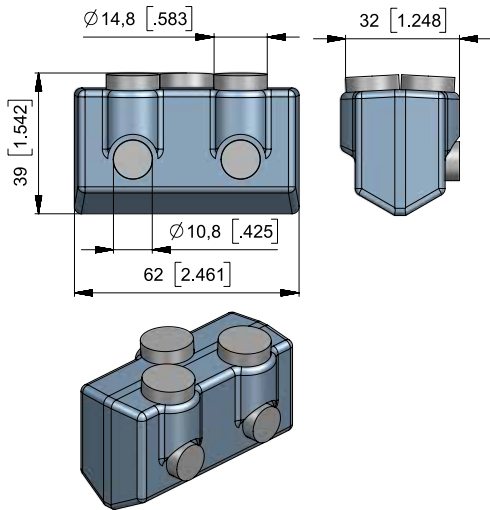


• **BA10**
BA50-26.5

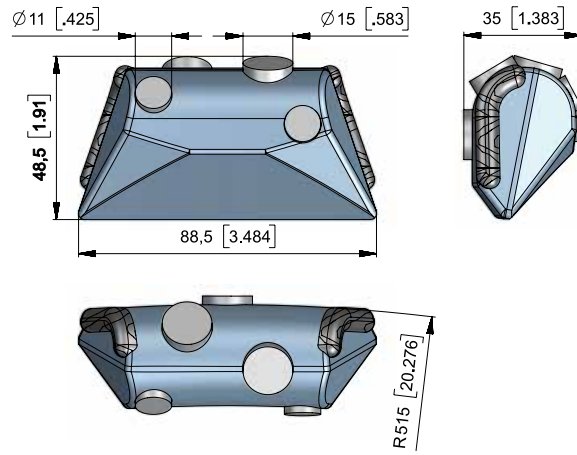


• **BA09**
BA50-29

FOUNDATION DRILLING



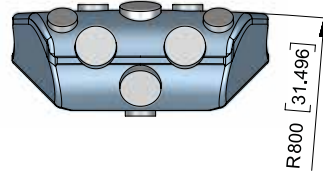
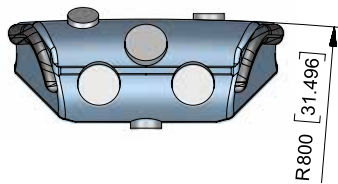
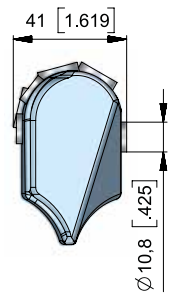
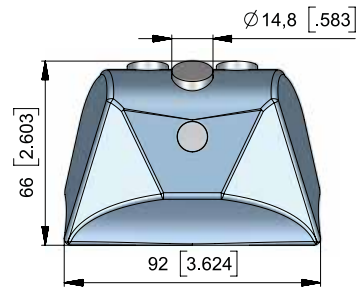
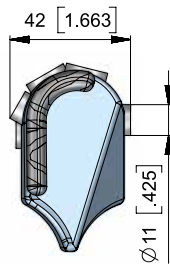
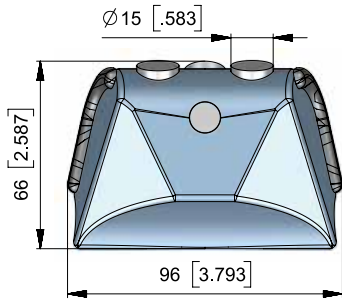
• BA32
BA60-32/2 



• BA01
BA90-35 

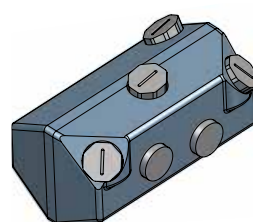
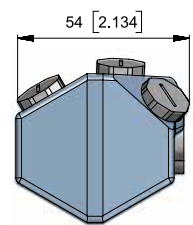
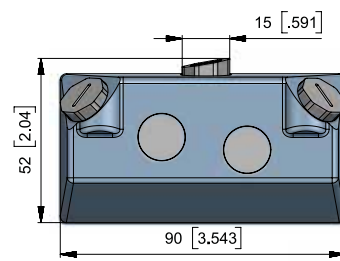
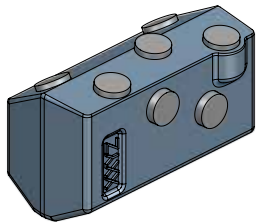
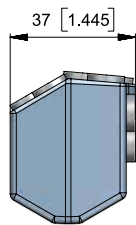
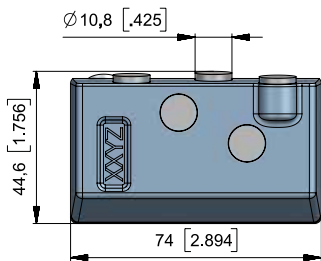


WELDING BARS



■ **BA24**
BA90-42 

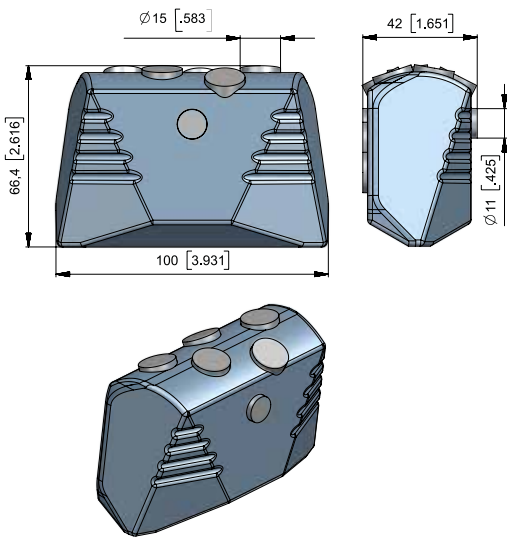
■ **BA62**
BA92-41 



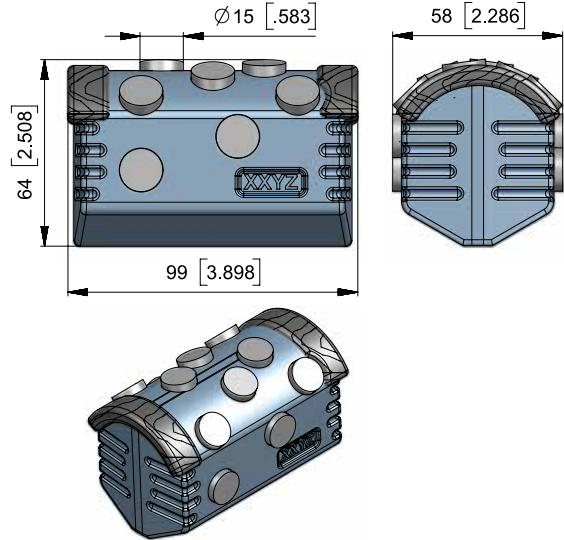
■ **BA04**
BA70-38 

■ **BA19**
BA90-54 

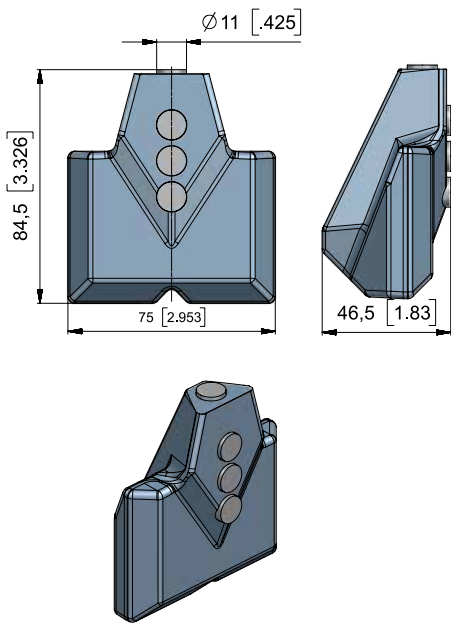
FOUNDATION DRILLING



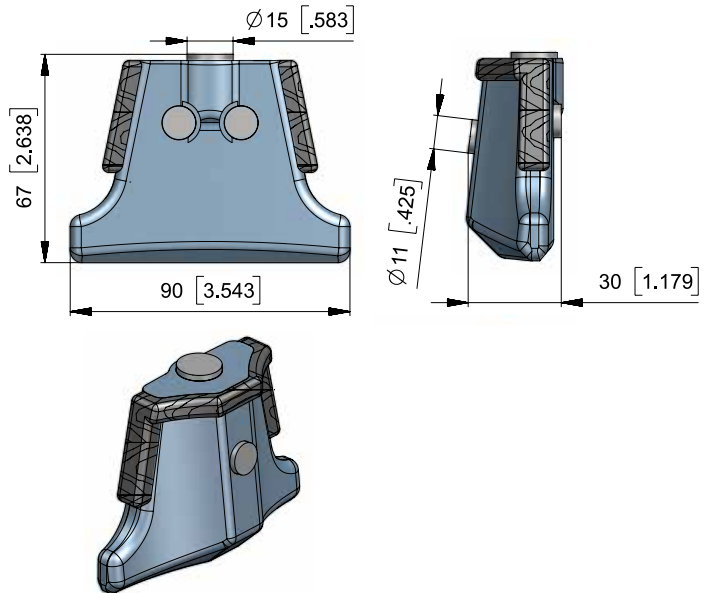
■ **BA55**
BA100-42 




■ **BA28**
BA90-58/3 



■ **BFZ26**
BFZ83x75x45/1 

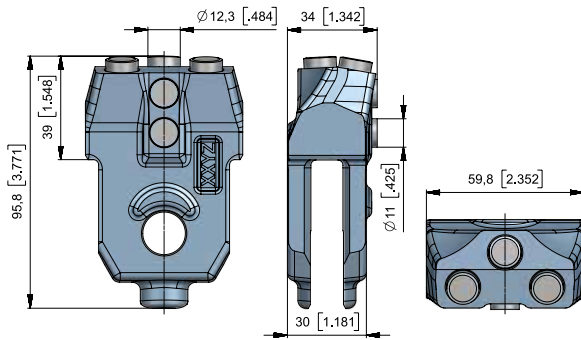


■ **BFZ72/B**
BFZ65x90x30 

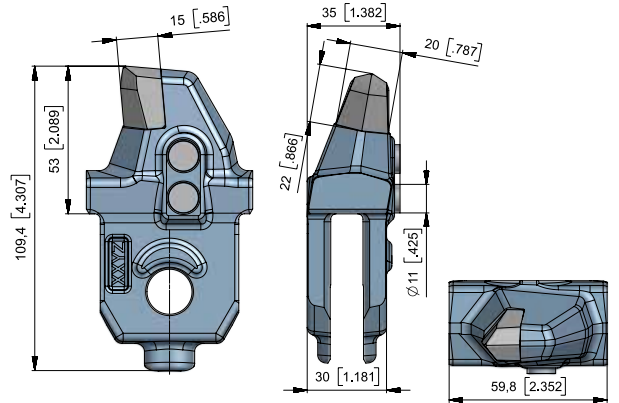
QUICK CHANGE BARS



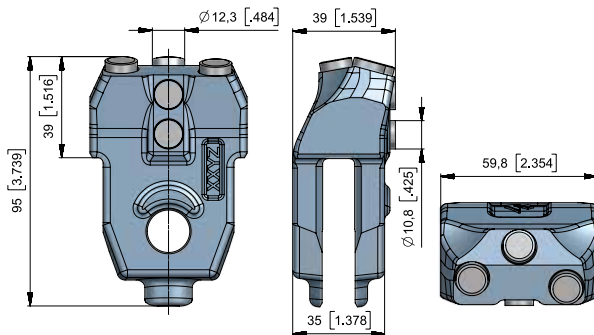
> CASING WALL THICKNESS – 30 MM/1,18"



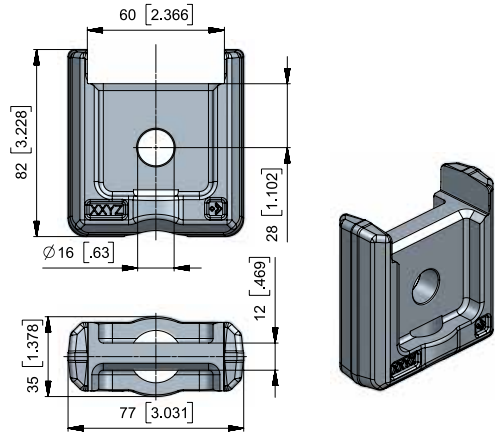
■ **BA60**
BA95.8x59.8x34.1 



■ **BA61**
BA109.5x59.8x35.1 



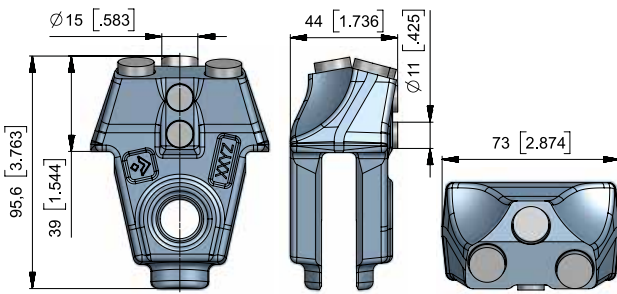
■ **BA58**
BA95x59.8x39.1 



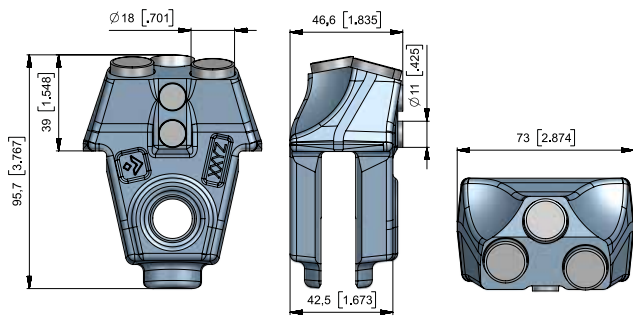
■ **BHA06**
BHA82x77x35 



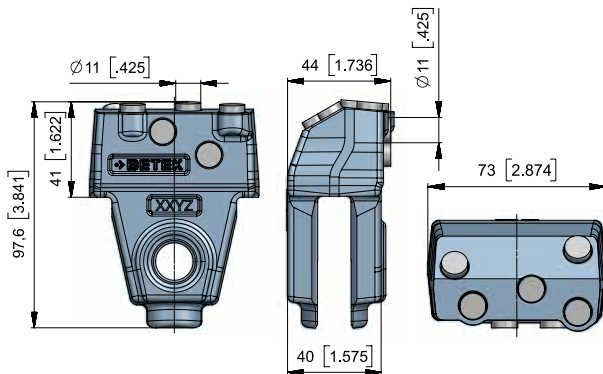
► CASING WALL THICKNESS – 40 MM/1,58"



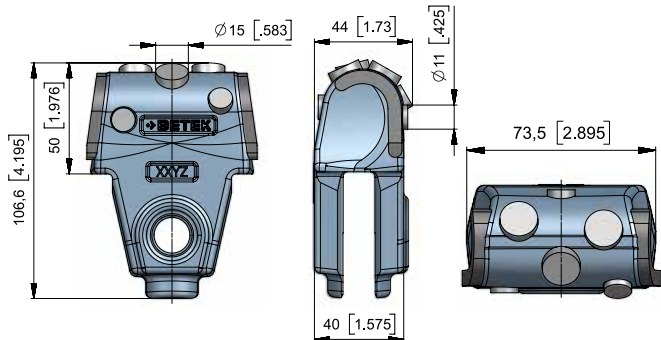
▪ **BA63**
BA95.6x73x44.1



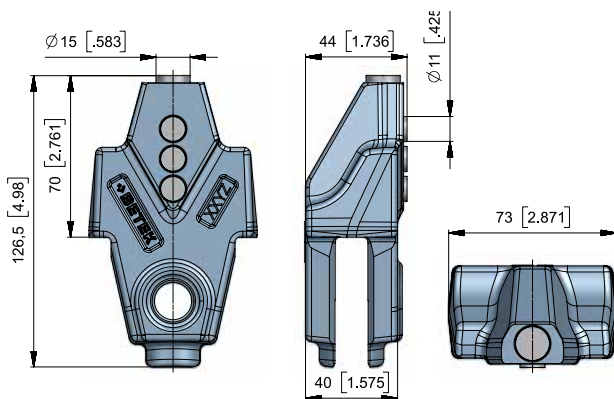
▪ **BA65**
BA95.6x73x46.6



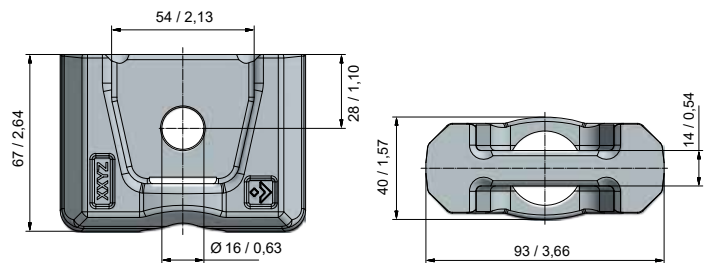
▪ **BA66**
BA97.6x73x45.8



▪ **BA67**
BA106.6x77x44



▪ **BA68**
BA126.5x73x44.4

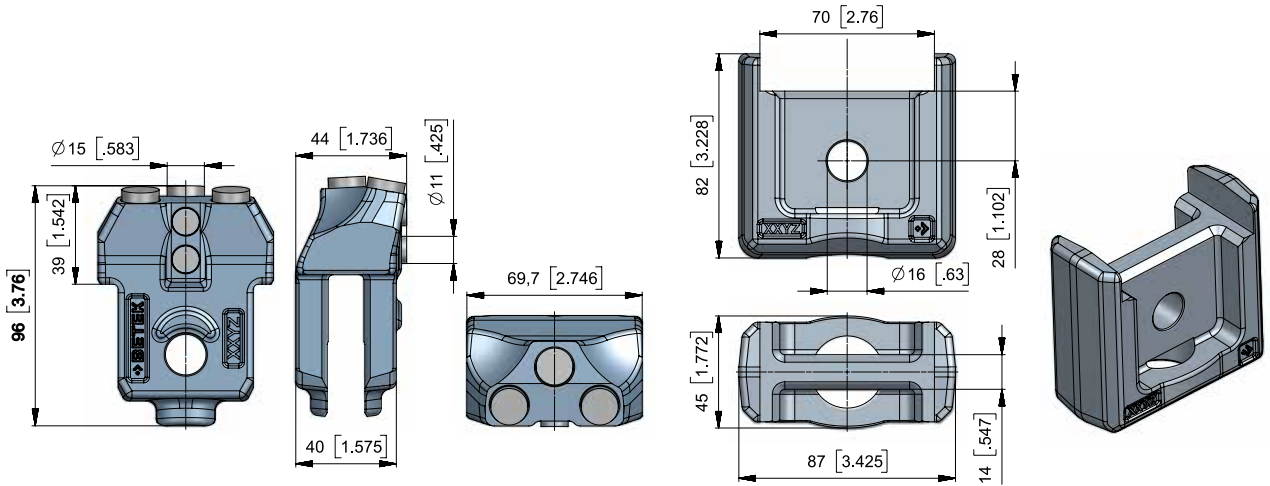


▪ **BHA07**
BHA93x67x40

QUICK CHANGE BARS

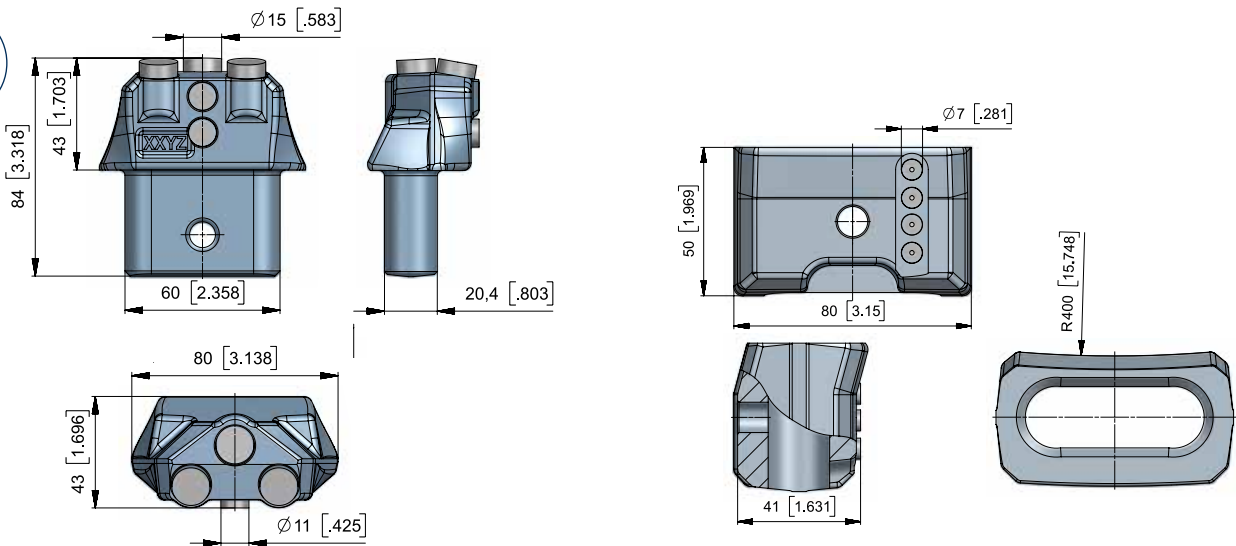


► CASING WALL THICKNESS – 40 MM/1,58"



■ **BA47**
BA95.5x69.8x44.1 

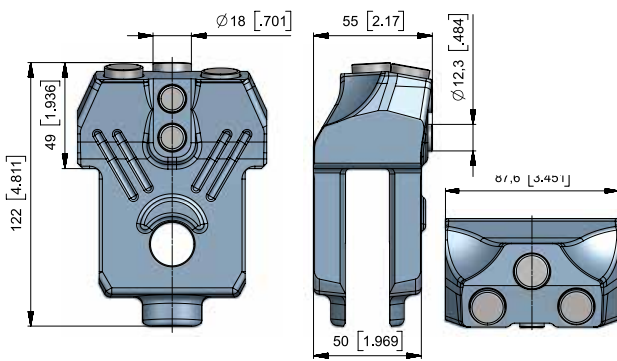
■ **BHA04**
BHA87x82x45 



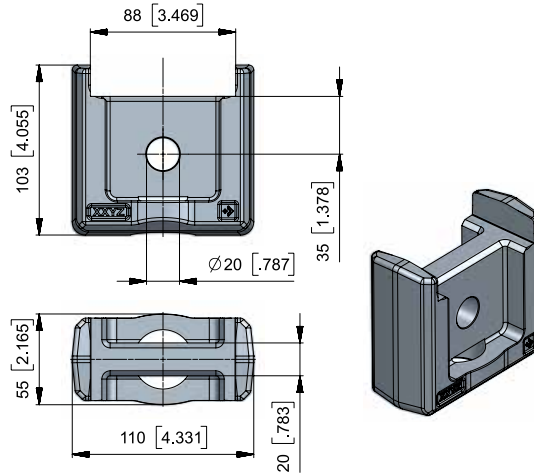
■ **BA46**
BA84.3x79.7x43.1 

■ **BHA02**
BHA80x50x45.2 

> CASING WALL THICKNESS – 50 MM/1,97"



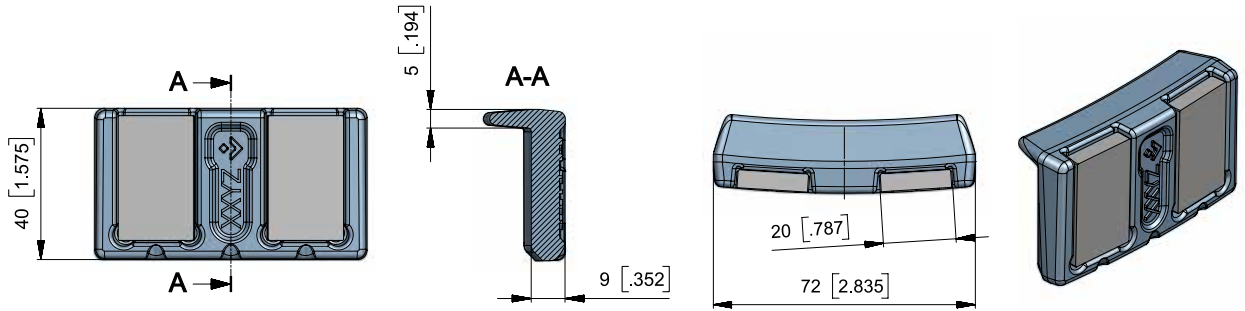
• BA53
BA122.2x87.7x50.1 



• BHA05
BHA110x103x55 



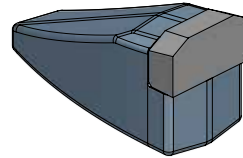
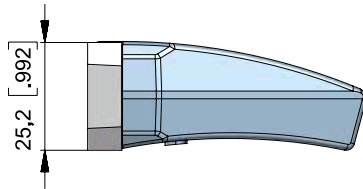
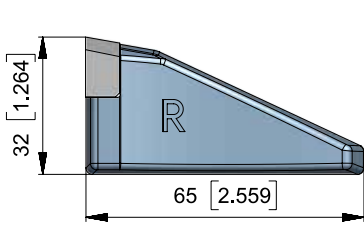
BORE PROTECTION ON AUGERS



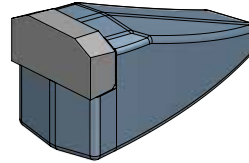
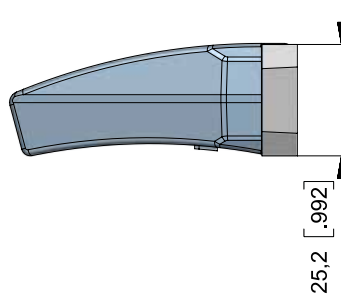
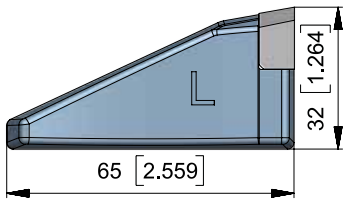
■ BA54
BA72x40x20 



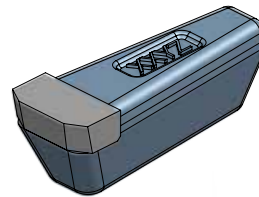
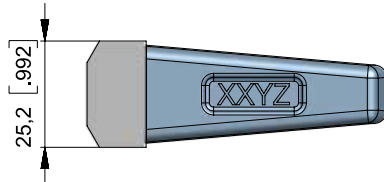
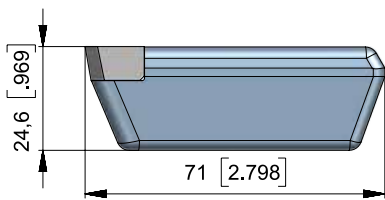
WELD-ON TEETH




▪ **BFZ25R**
BFZ25-R 

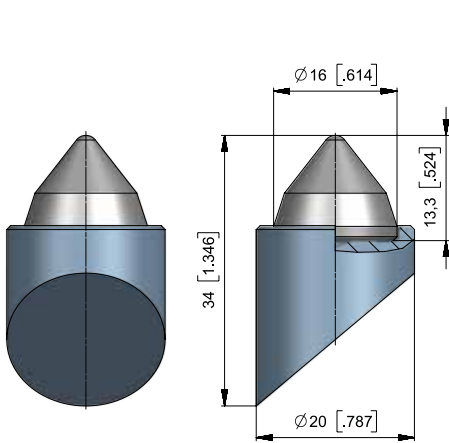


▪ **BFZ25L**
BFZ25-L 

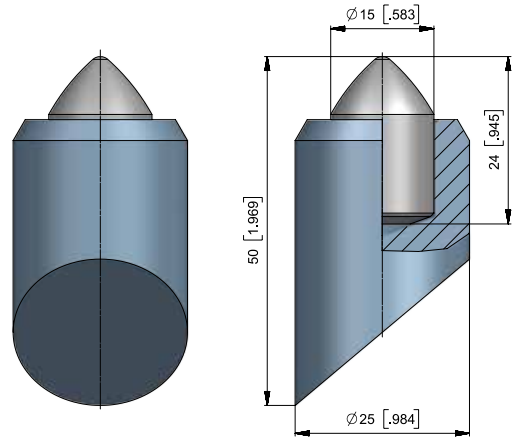


▪ **BFZ96**
BFZ71x25 

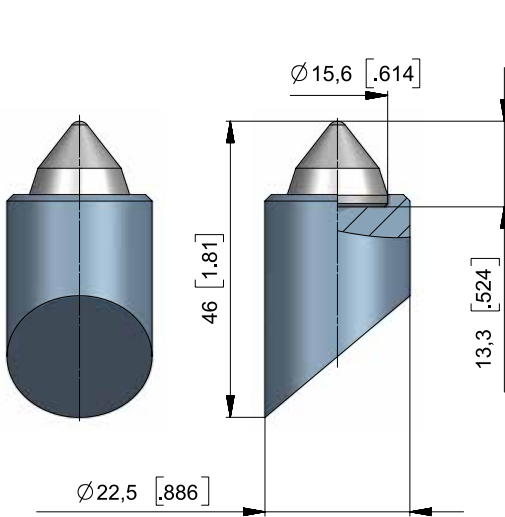
WELD-ON TEETH




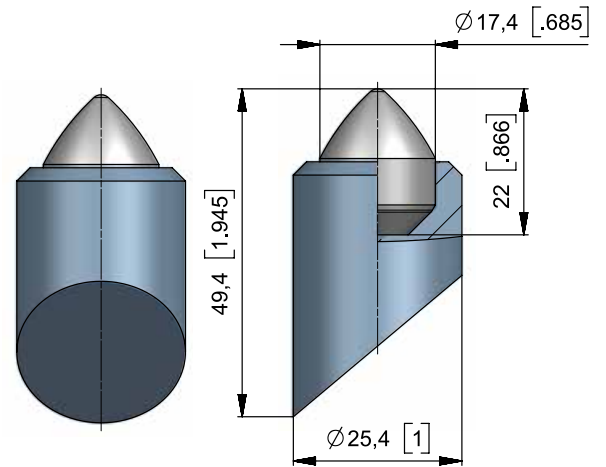
• **BFZ158**
BFZ3 



• **BFZ207**
BFZ1 

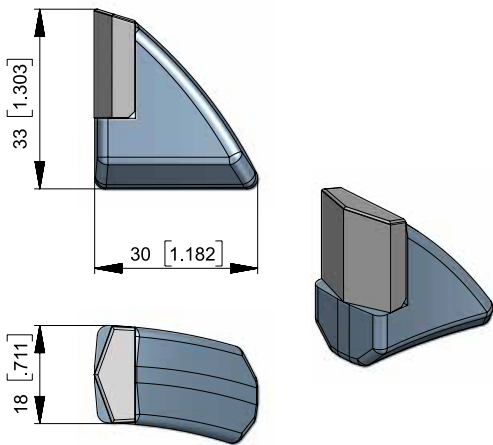



• **BFZ283**
BFZ3/46 

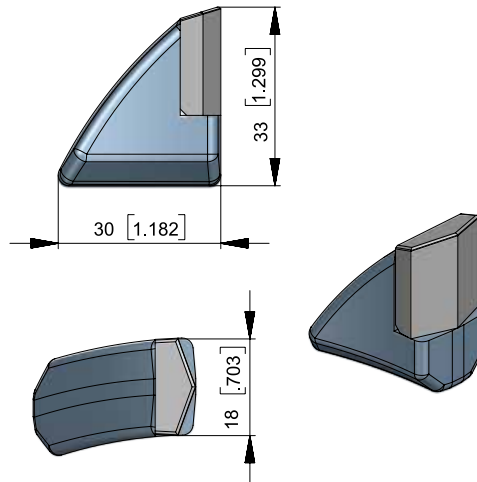


• **BFZ1028**
BFZ25.4x49.4 

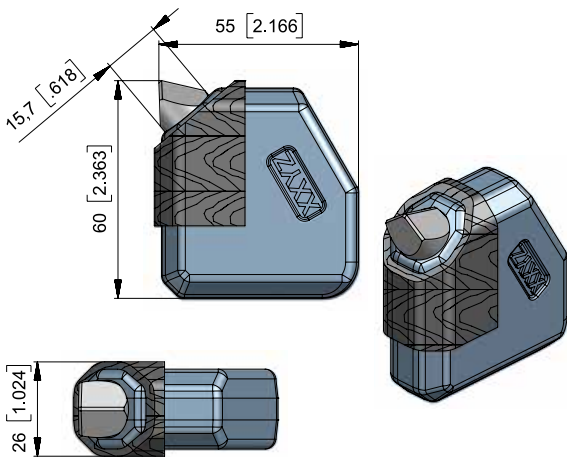
FOUNDATION DRILLING



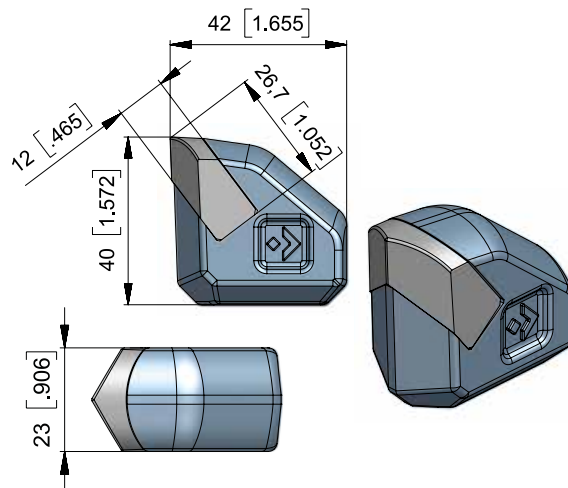
• **BFZ107**
BFZ18/R 



• **BFZ144**
BFZ18/L 

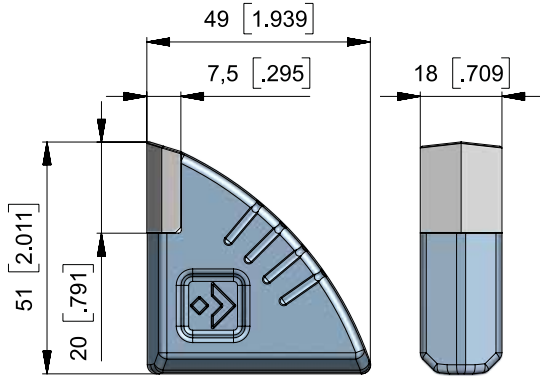


• **BFZ257**
BFZ60x55x22 

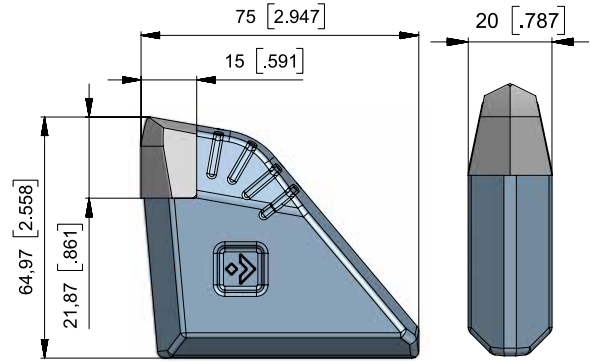


• **BFZ327**
BFZ42x40x23 

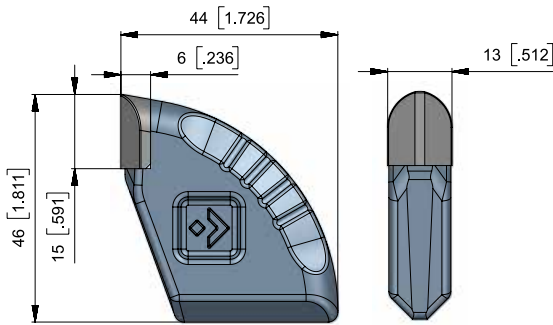
WELD-ON TEETH



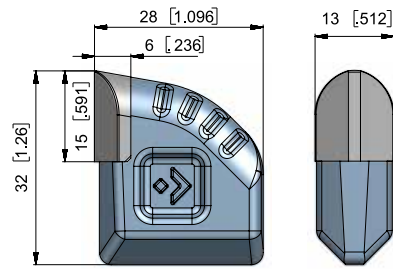
• **BFZ87**
BFZ51x49x18  50



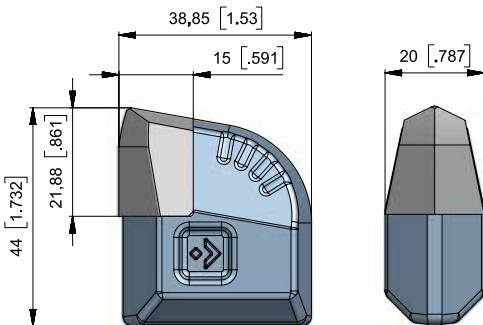
• **BFZ319**
BFZ75x65x20  25



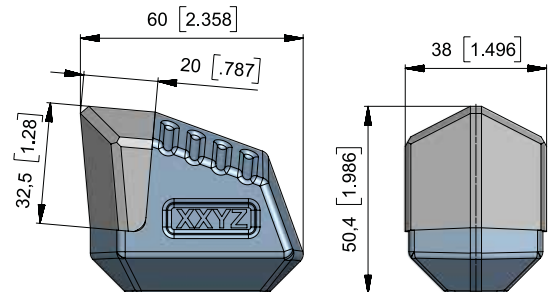
• **BFZ318**
BFZ46x44x13  100



• **BFZ321**
BFZ32x28x13  250

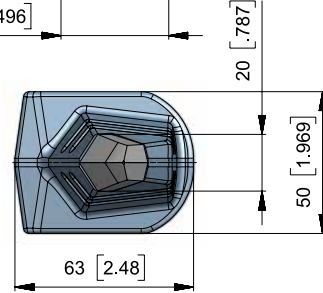
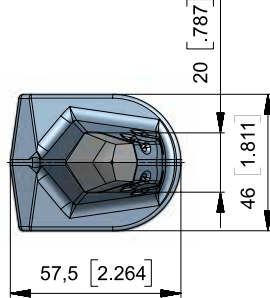
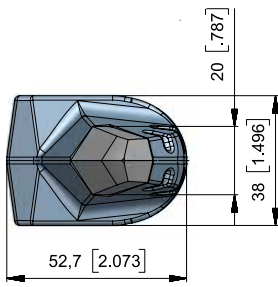
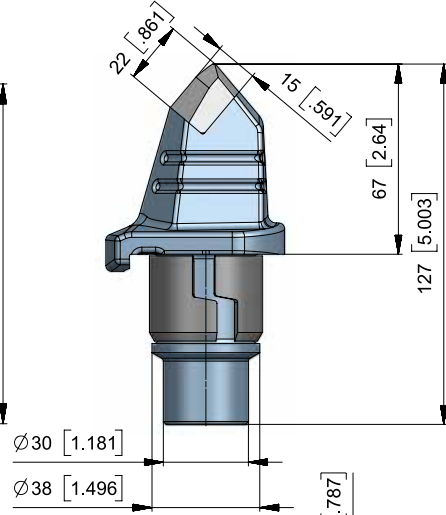
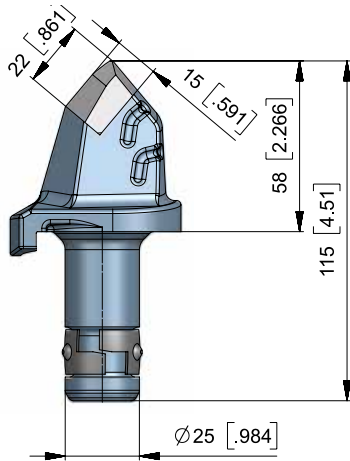
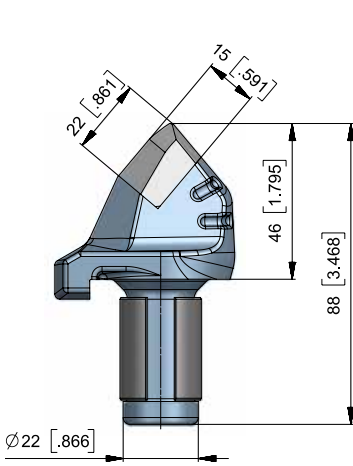
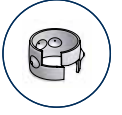


• **BFZ320**
BFZ44x39x20  50



• **BFZ326**
BFZ38/M  25

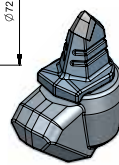
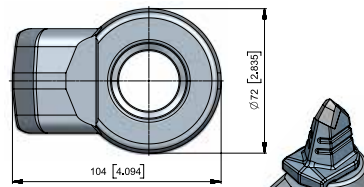
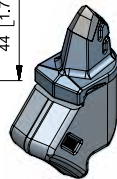
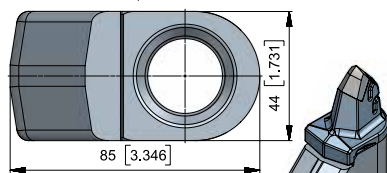
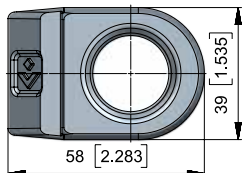
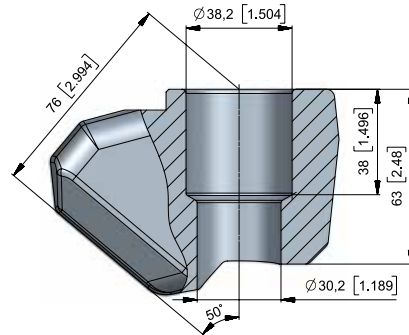
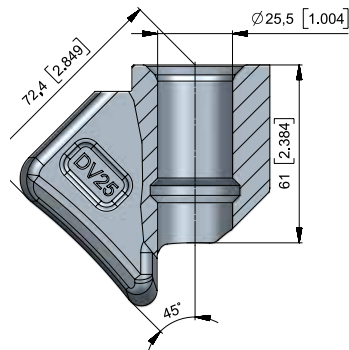
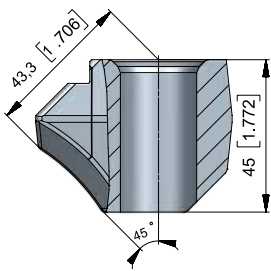
DRAGON TOOTH



▪ **BFR07**
BFR46-22

▪ **BFR08**
BFR58-25

▪ **BFR10**
BFR67-38/30

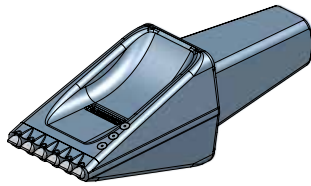
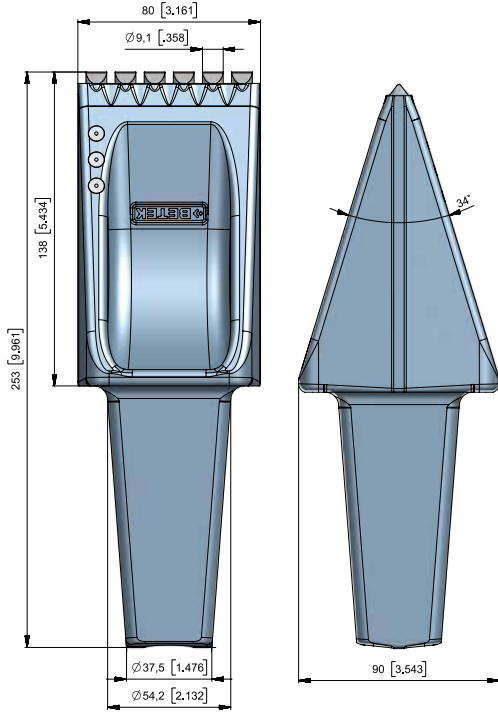



▪ **BHR133**
B10/22-F

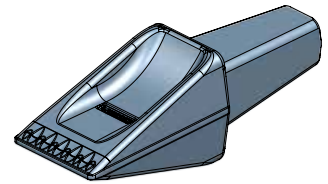
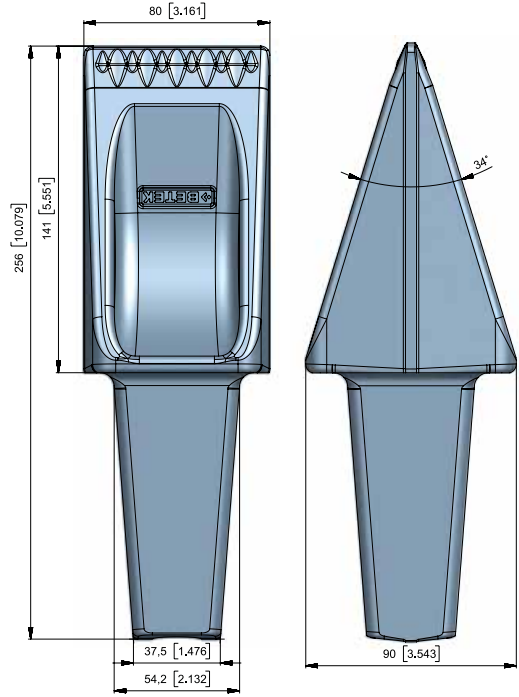
▪ **BHR184**
DV25-F


▪ **BHR244**
B43K-F

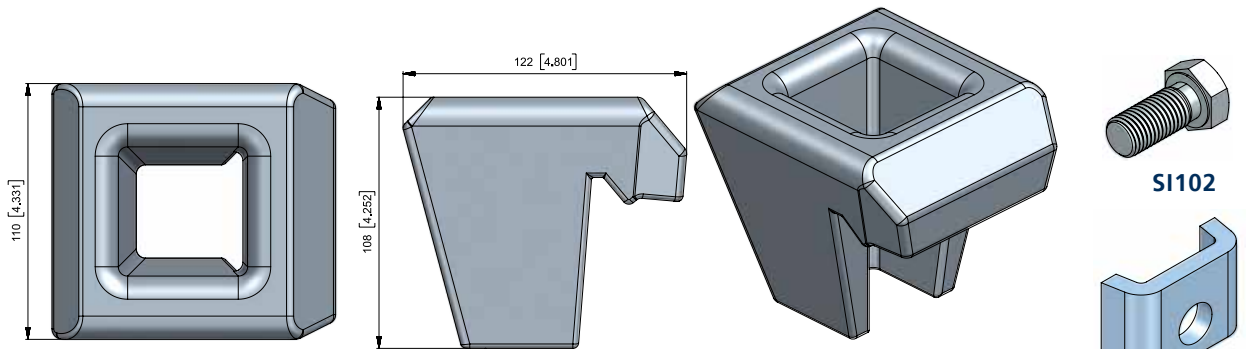
FLAT TEETH



■ **BFZ317**
BFZ80-B 



■ **BFZ79**
BFZ80OHM 

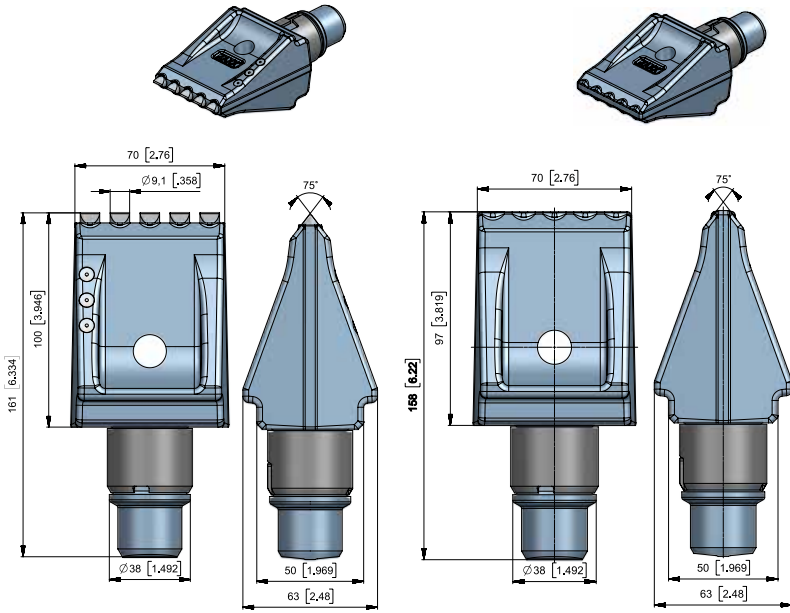


■ **BHR73**
BHZ80/2 

SI102

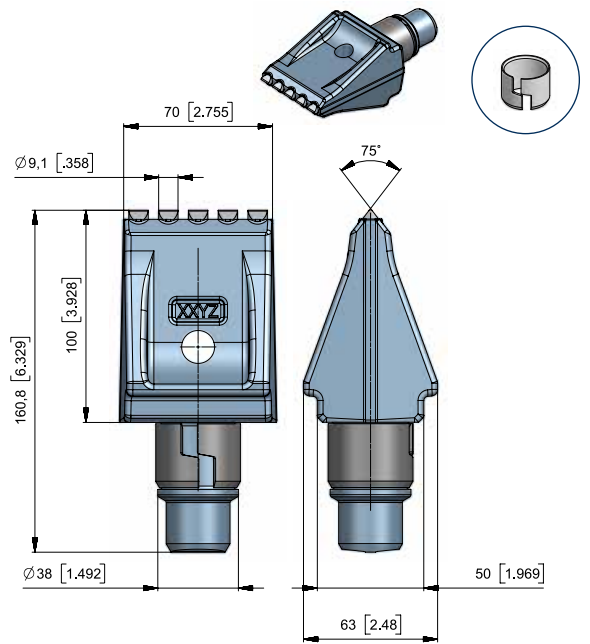
SI103

FOUNDATION DRILLING

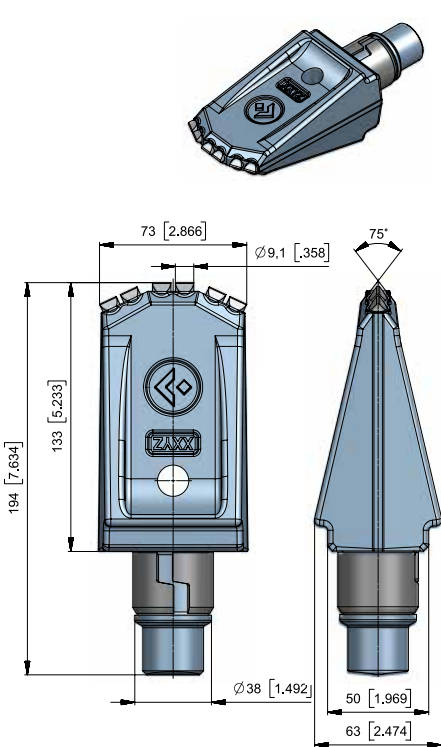


■ **BFZ162**
BFZ100x70/2

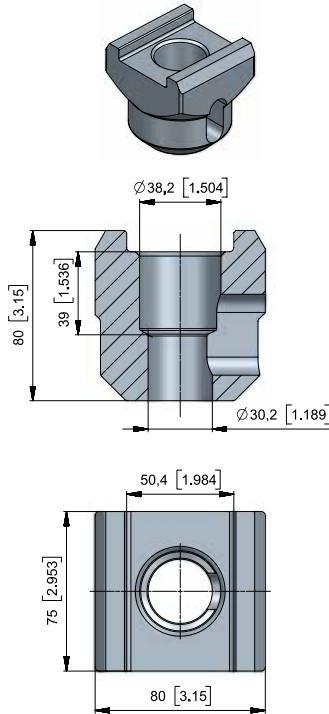
■ **BFZ69**
BFZ100x70



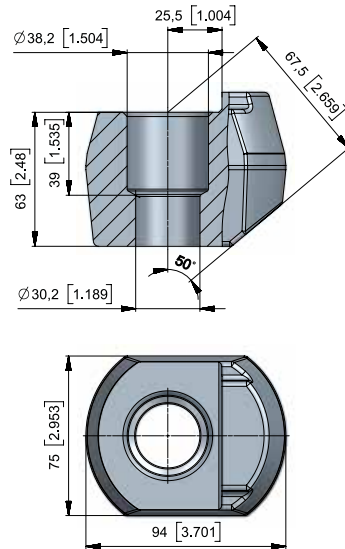
■ **BFZ339**
BFZ100x70/4



■ **BFZ322**
BFZ133x73

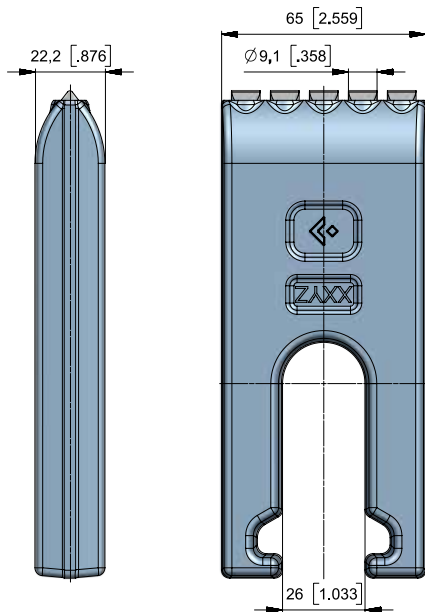


■ **BHR112**
B75

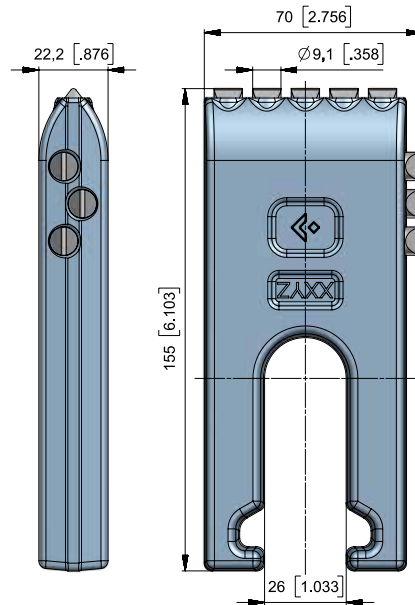


■ **BHR39**
B48

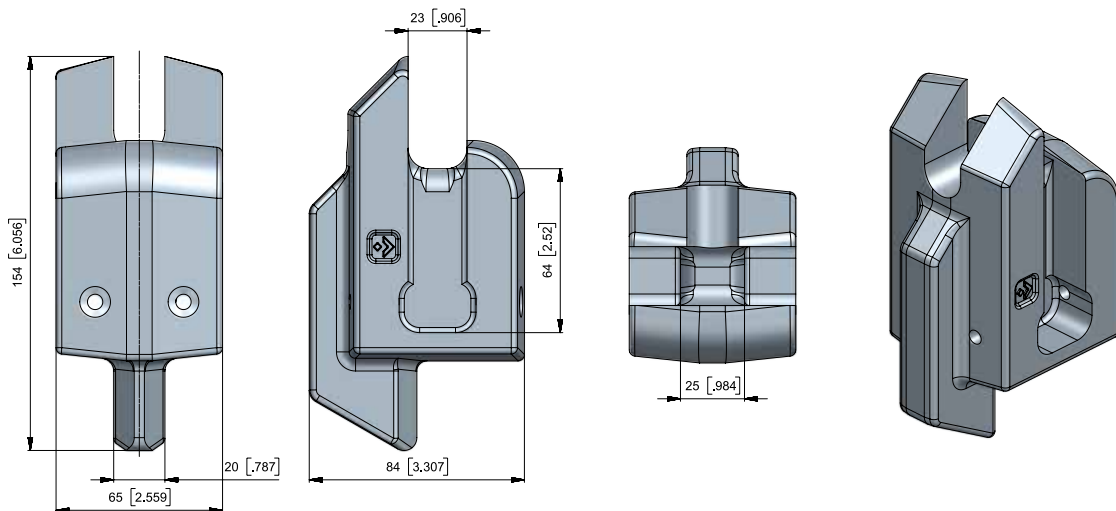
FLAT TEETH



■ **BFZ65HM**
BFZ65/2



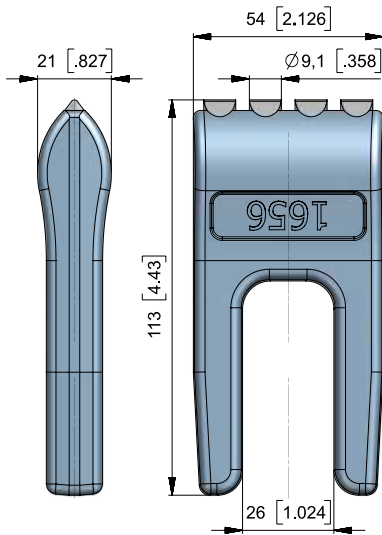
■ **BFZ02**
BFZ65/3



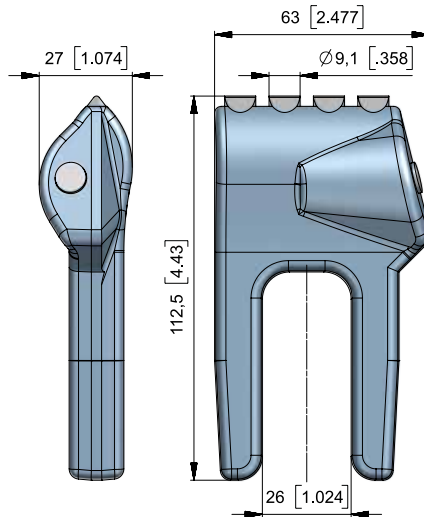
■ **BHF02**
B65-22



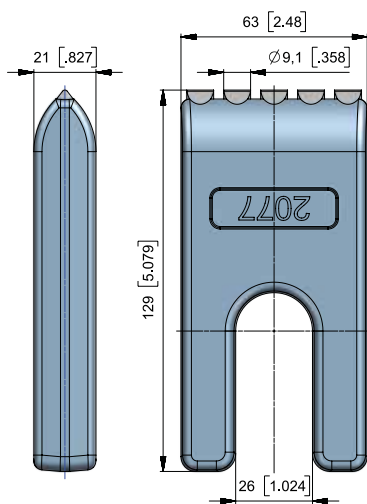
FOUNDATION DRILLING



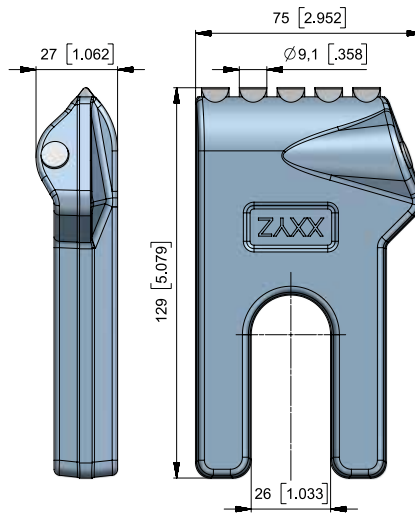
■ **BFZ05N**
BFZ1656N 



■ **BFZ198N**
BFZ1658N 



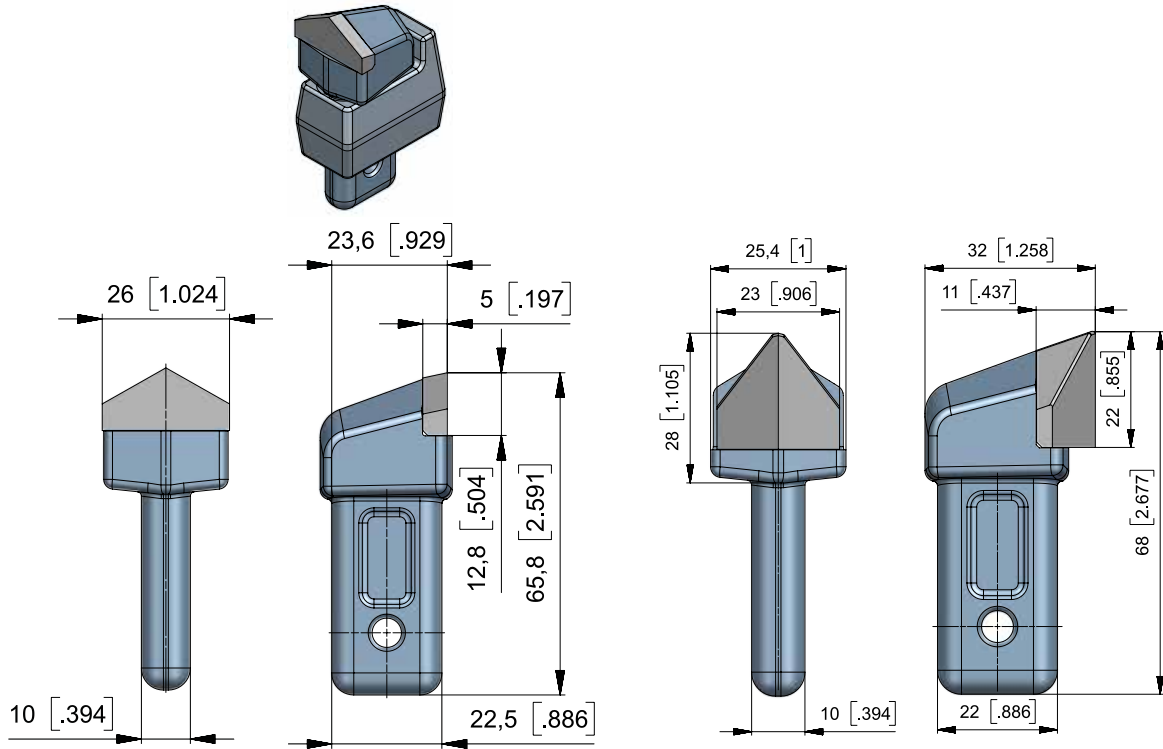
■ **BFZ200N**
BFZ2077N 



■ **BFZ218**
BFZ2078 

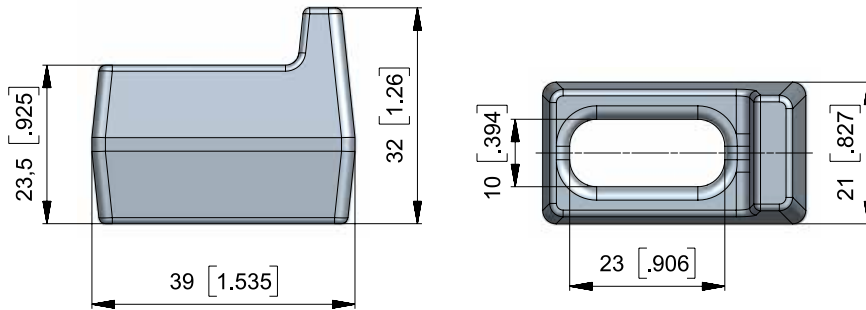


FLAT TEETH



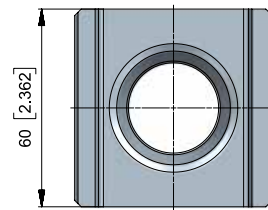
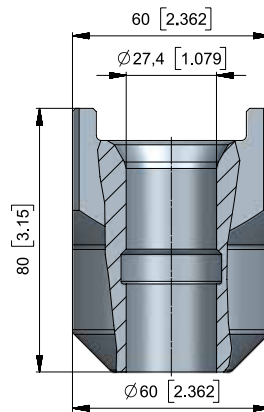
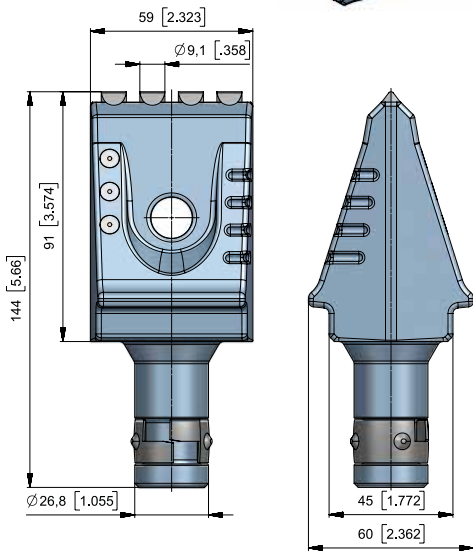
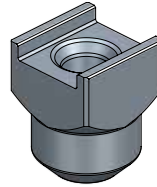
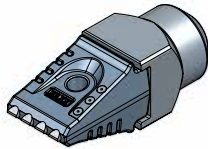
• **BFZ272**
BFZ65.8x27x26

• **BFZ347**
BFZ68x32x25.4



• **BHZ24**
BHZ39x32x21

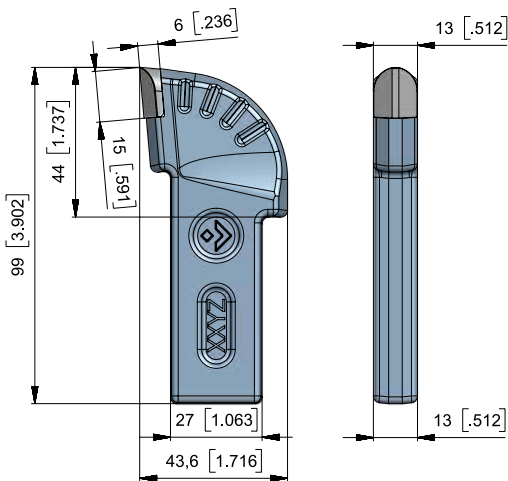
FOUNDATION DRILLING



▪ **BFZ324**
BFZ91x59



▪ **BHR254**
B60/27

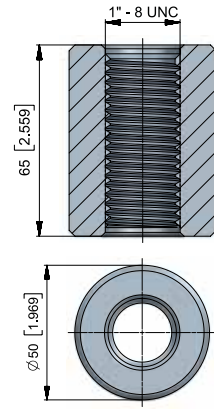
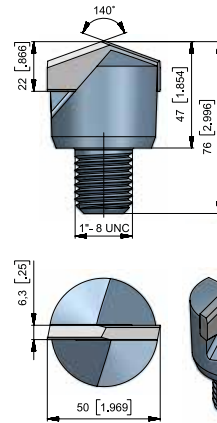
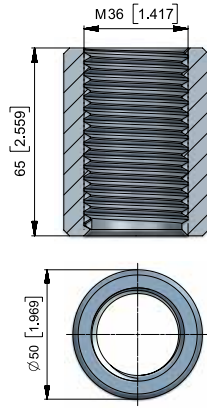
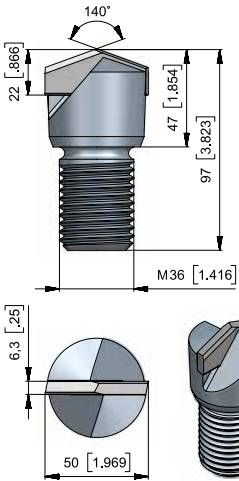


▪ **BF64**
BF99.1x43.6x13





PILOTS

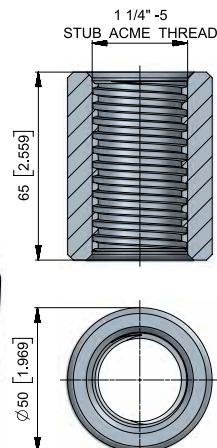
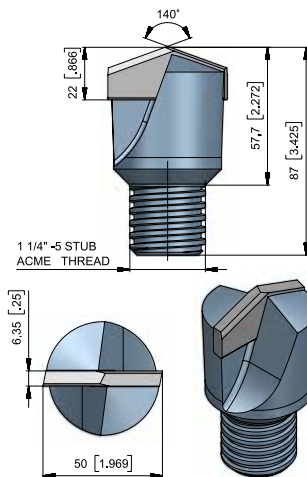
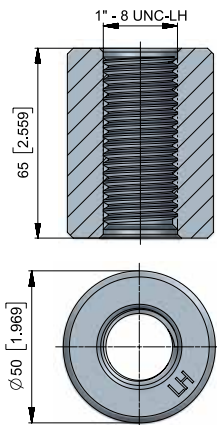
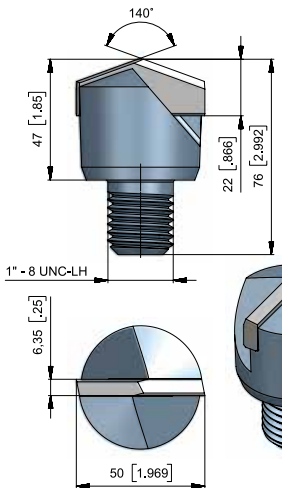


■ **BP04**
BP51/M36-HD3

■ **BPH01**
GH-M36

■ **BP01**
BP51/1"-HD3

■ **BPH02**
GH-1"



■ **BP10**
BP51/1"-HD3/LH

■ **BPH03**
GH-1" LH

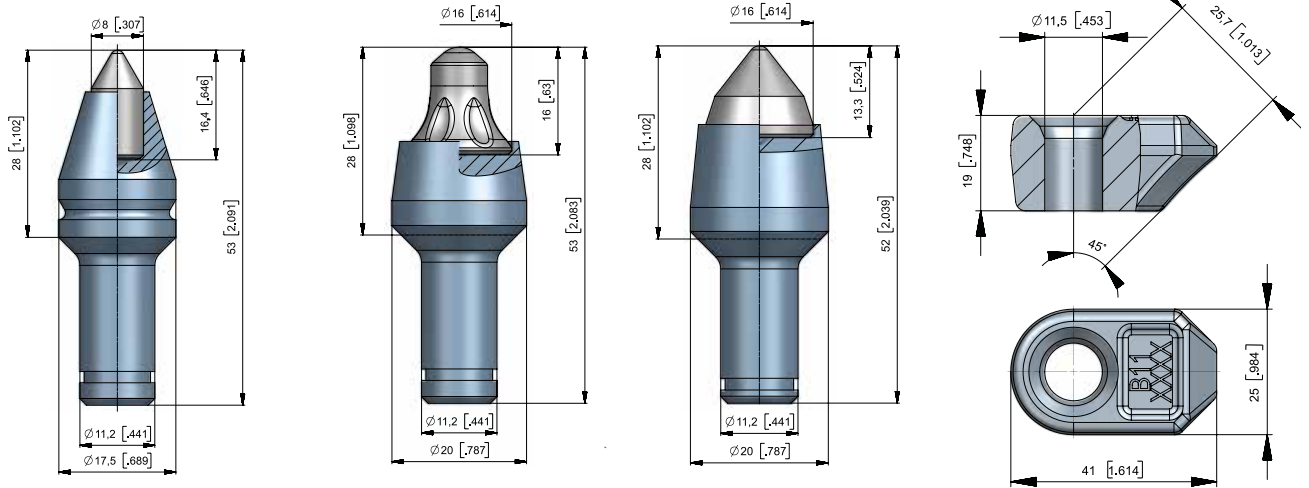
■ **BP51**
BP51x87

■ **BPH04**
GH-1 1/4"-5

ROUND SHANK CUTTER BITS



▶ SHANK SYSTEM – Ø 11 MM/0,43"



• **BM11**

BG11W-08.1828



• **BM10**

BG11W-61.2028



• **BM46**

BG11W-60.2028

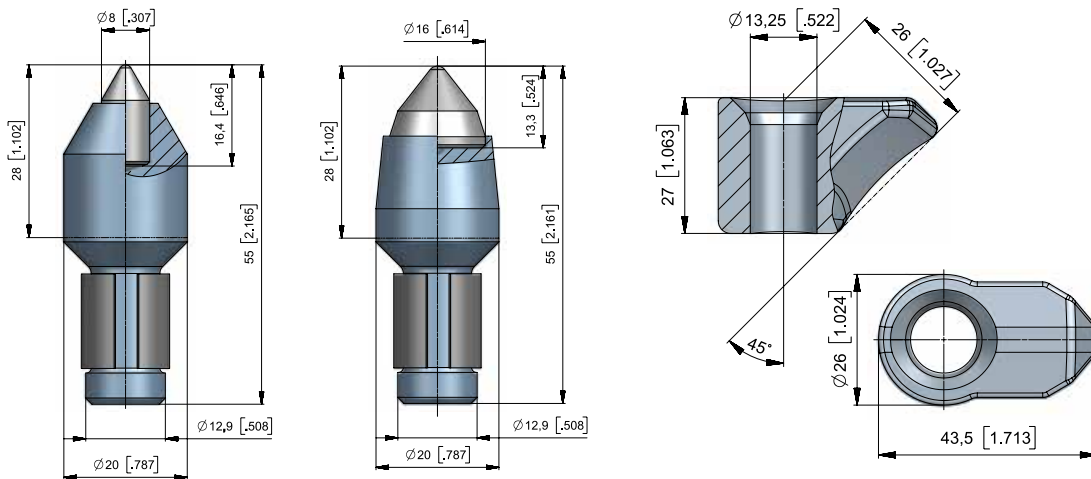


• **BHR03**

B11



▶ SHANK SYSTEM – Ø 13 MM/0,51"



• **BM34**

BG13H-08.2028



• **BM62**

BG13H-60.2028

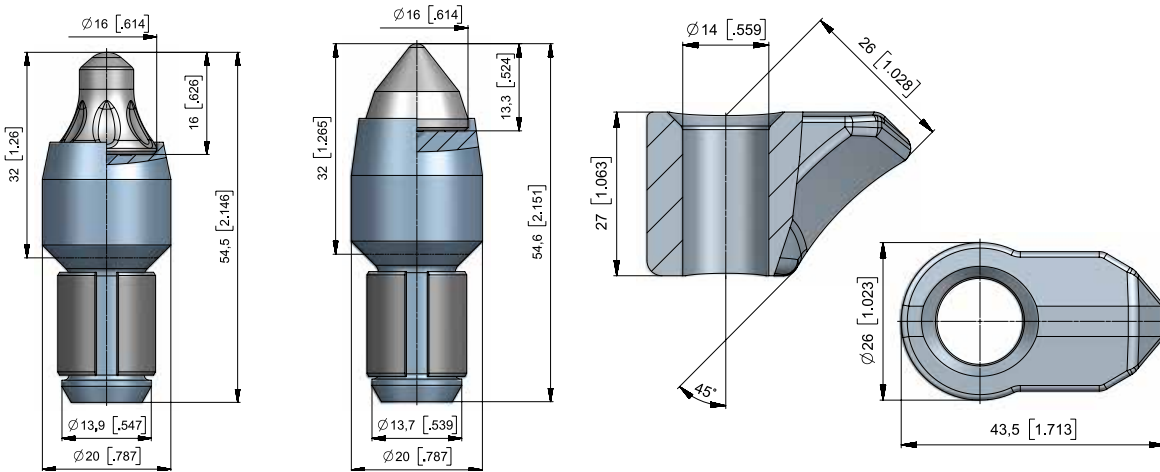


• **BHR47**

B13



► SHANK SYSTEM – Ø 14 MM/0,55"

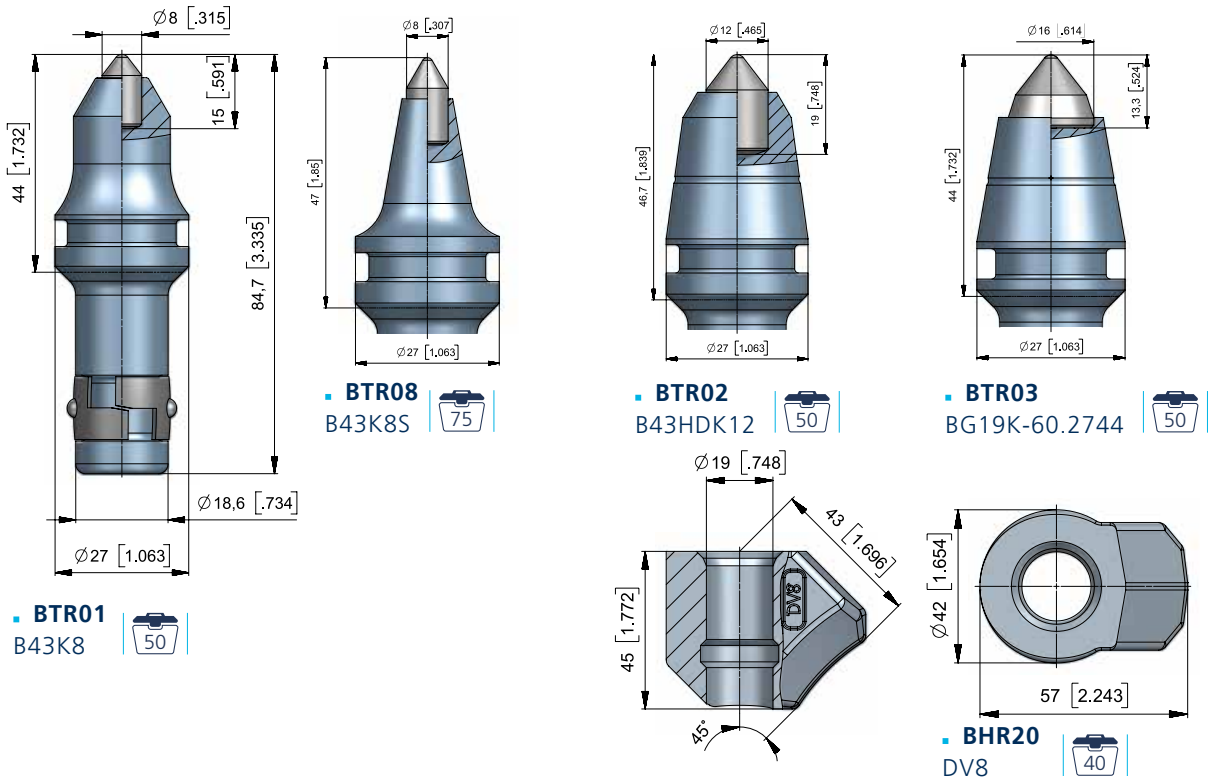
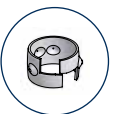


• **BM55**
BG14H-61.2032 

• **BM60**
BG14H-60.2028 

• **BHR109**
B14 

► SHANK SYSTEM – Ø 18,7 MM/0,74"



• **BTR01**
B43K8 

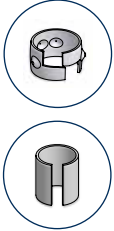
• **BTR08**
B43K8S 

• **BTR02**
B43HDK12 

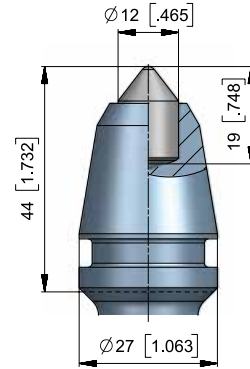
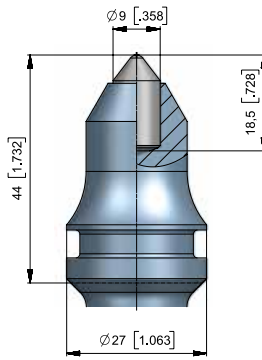
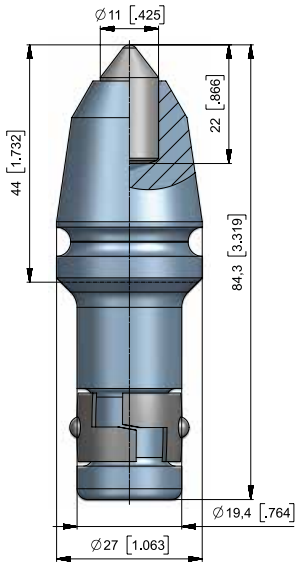
• **BTR03**
BG19K-60.2744 

• **BHR20**
DV8 

ROUND SHANK CUTTER BITS

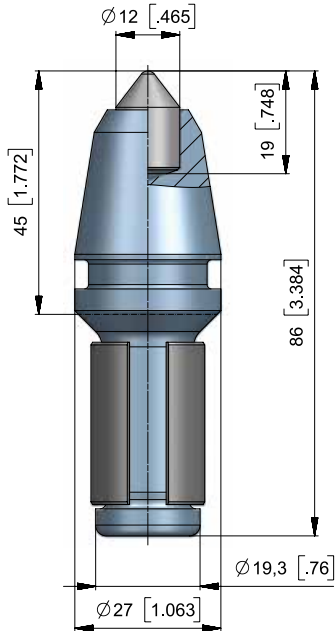


> SHANK SYSTEM – Ø 19,4 MM – 0,76"

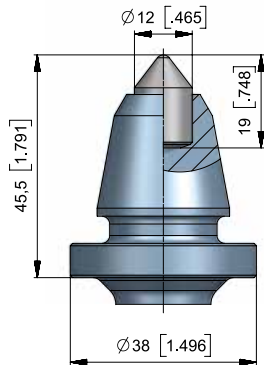


■ **BSK15**
B1K9-K

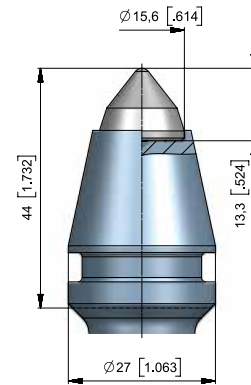
■ **BSK17**
BG20K-12.2744



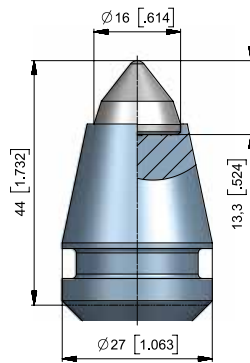
■ **BSK16**
B1HDK11-K



■ **BSK21**
BG20K-12.3846



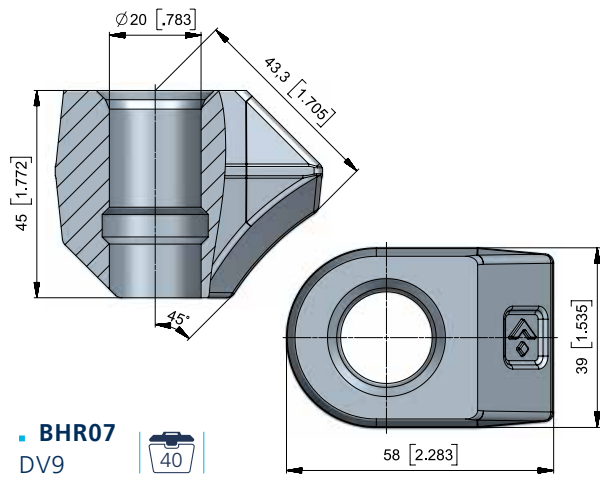
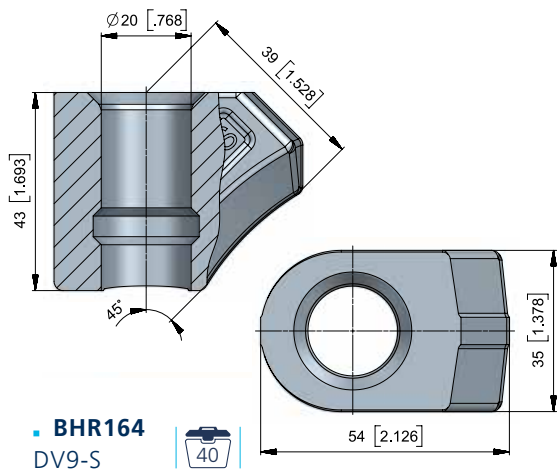
■ **BSK23**
B3-K/2



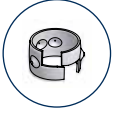
■ **BSH05**
B1HDK12

■ **BSH09**
BG20K-60.2744

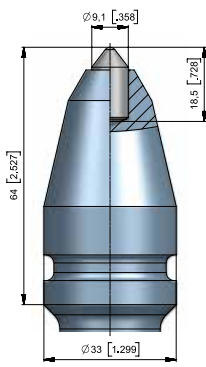
► SHANK SYSTEM – Ø 19,4 MM/0,76"



ROUND SHANK CUTTER BITS

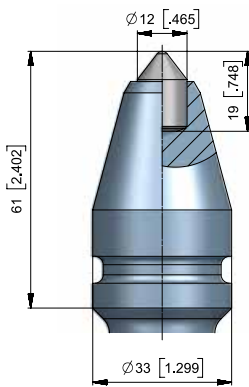


> SHANK SYSTEM – Ø 25 MM/1"



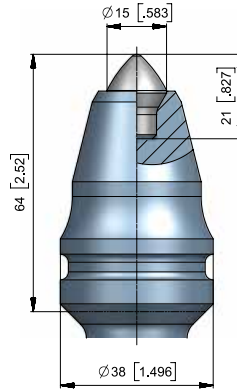
■ **BTK01**

BG25K-09.3364



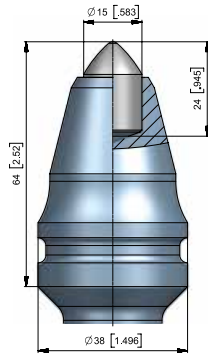
■ **BTK03**

BG25K-12.3361



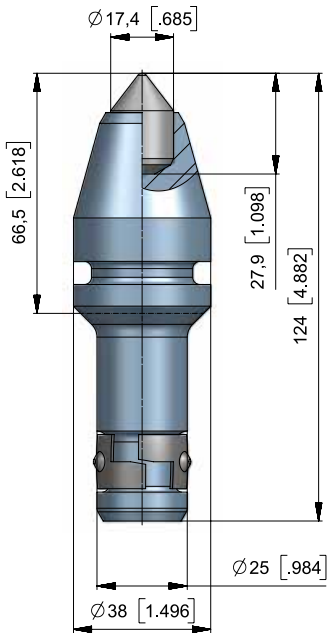
■ **BTK164**

BG25K-76.3864



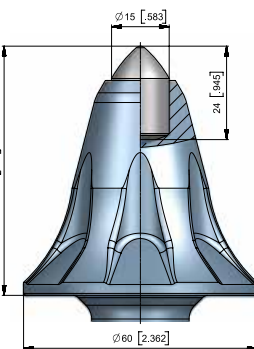
■ **BTK10**

BG25K-15.3864



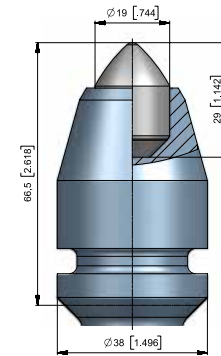
■ **BTK70**

BG25K-17.3867



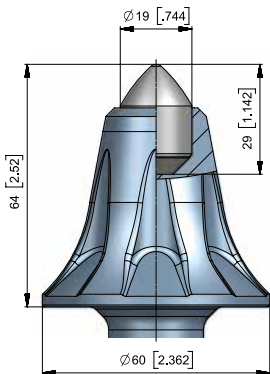
■ **BTK81**

B40HDS/60



■ **BTK162**

BG25-19.3867

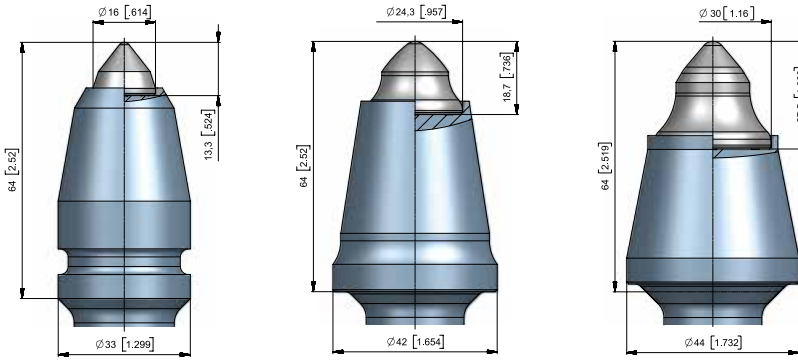
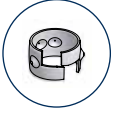


■ **BTK89**

BG25K-19.6064

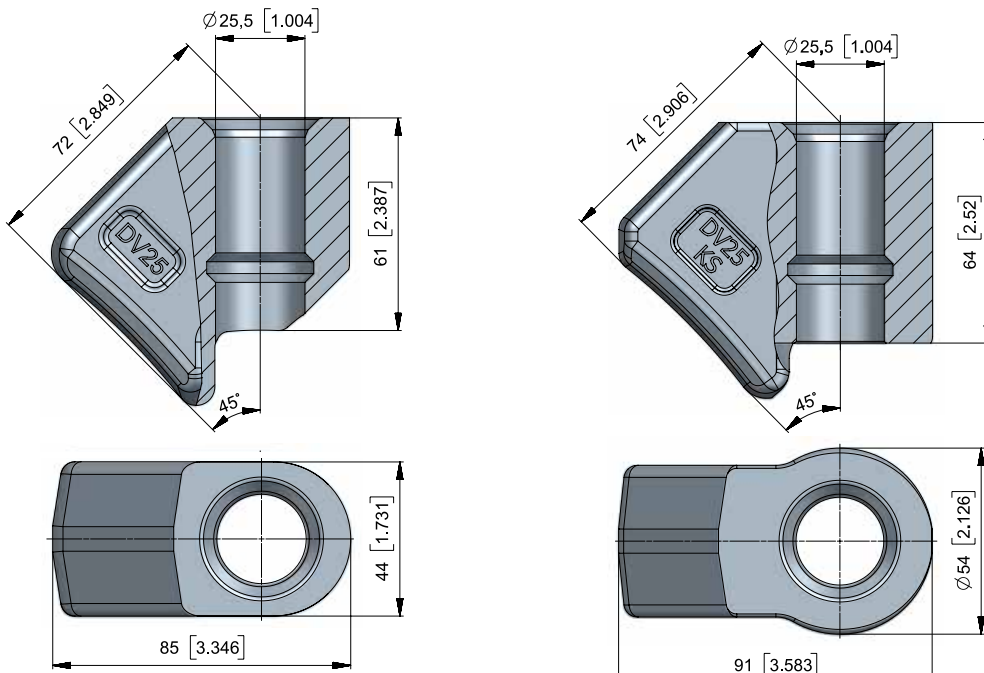


► SHANK SYSTEM – Ø 25 MM/1"



- **BTK16**
BG25K-60.3364
- **BTK87**
BG25K-68.4264
- **BTK26**
BG25K-69.4464

► SHANK SYSTEM – Ø 25,5 MM/1"

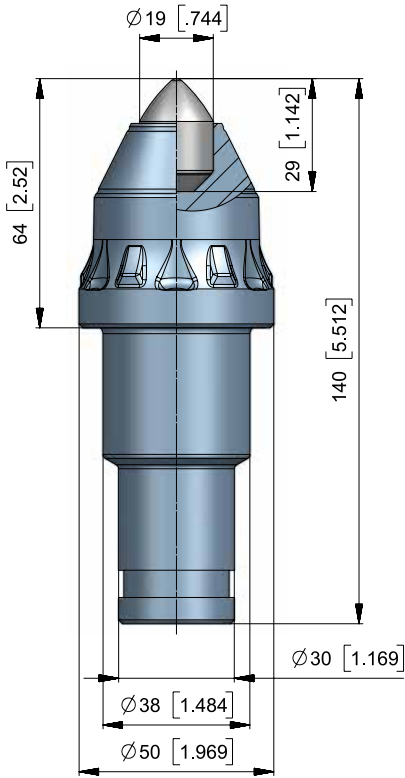


- **BHR31**
DV25
- **BHR121**
DV25KS

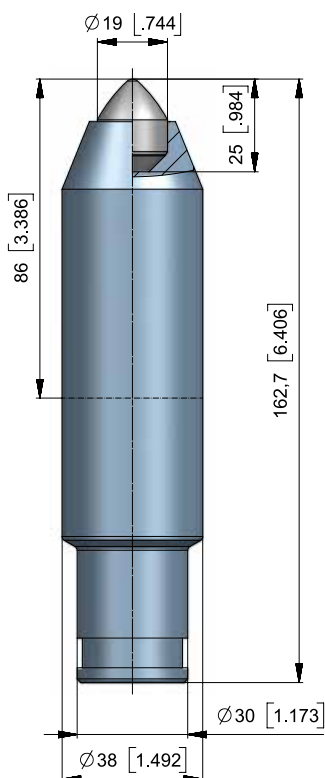


ROUND SHANK CUTTER BITS

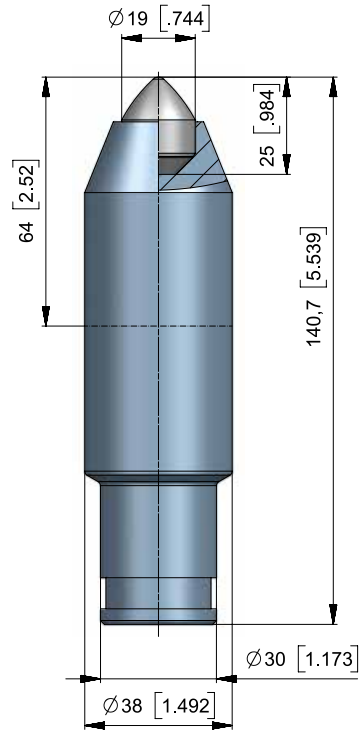
► SHANK SYSTEM – Ø 38/30 MM – 1,5/1,18"



• **BKS154**
BS38W-19.5064



• **BKS186**
BS38W-19.3889

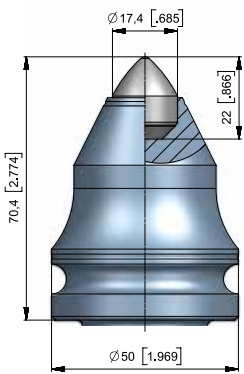


• **BKS187**
BS38W-19.3864

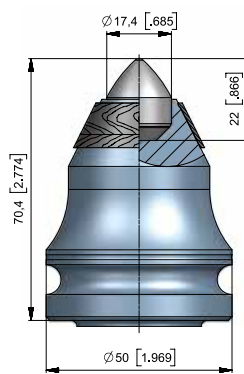
ROUND SHANK CUTTER BITS



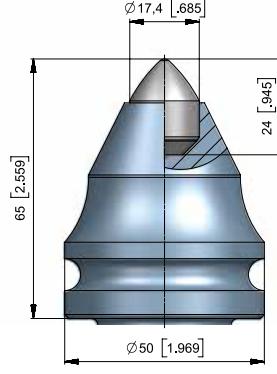
► SHANK SYSTEM – Ø 38/30 MM – 1,5/1,18"



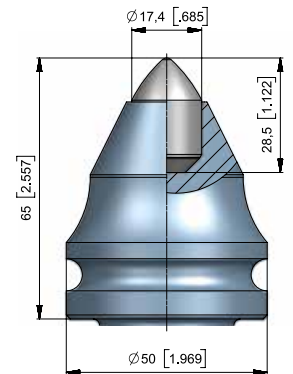
■ **BKH110**
BS38H-17.5070 



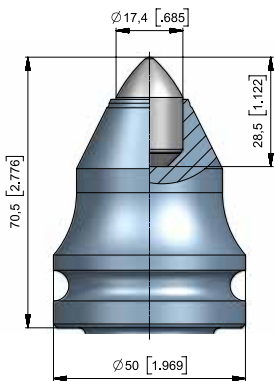
■ **BKH110P**
BS38H-17.5070AP 



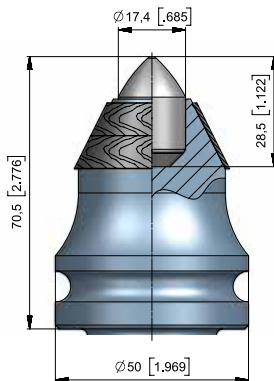
■ **BKH140**
BS38H-17.5065 



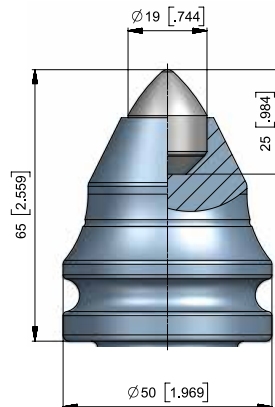
■ **BKH28**
BS38H-17.5065 



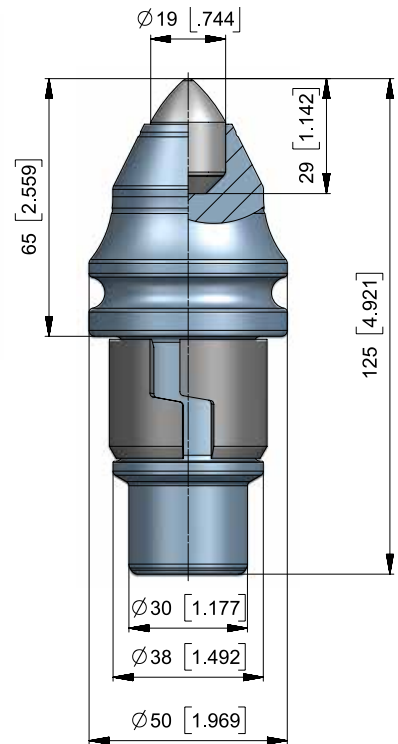
■ **BKH80**
BS38H-17.5070 



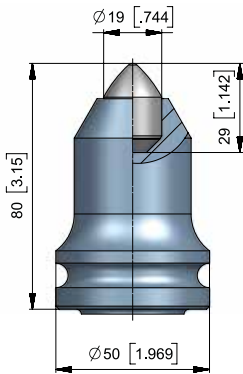
■ **BKH80P**
BS38H-17.5070P 



■ **BKH83**
BS38H-19.5065 

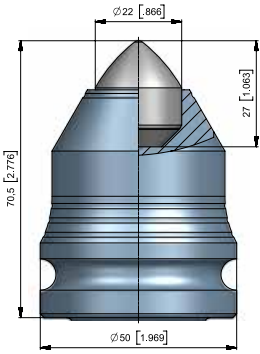


■ **BKH40**
BS38H-19.5065 

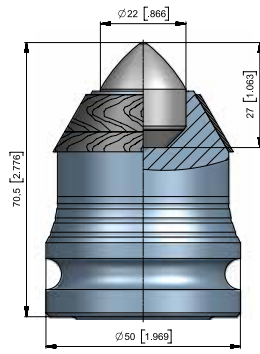



■ **BKH41**
BS38H-19.5080 

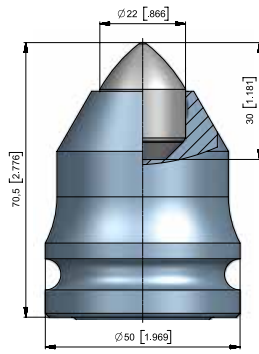
FOUNDATION DRILLING




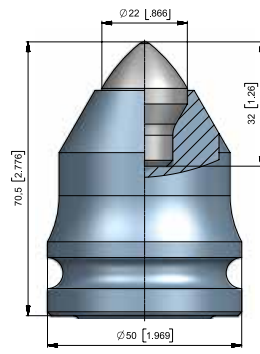
■ **BKH105**
BS38H-22.5070B 



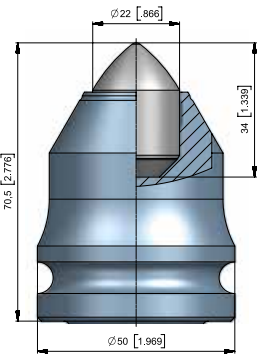
■ **BKH105P**
BS38H-22.5070P 



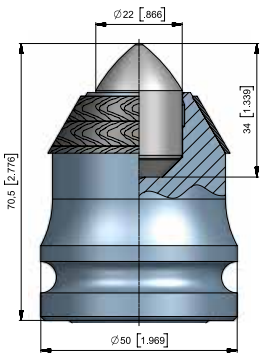
■ **BKH85**
BS38H-22.5070 




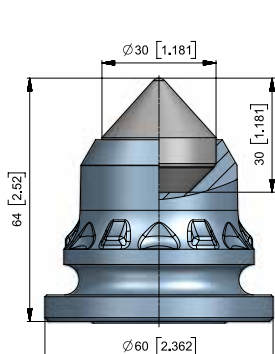
■ **BKH130**
BS38H-73.5070 




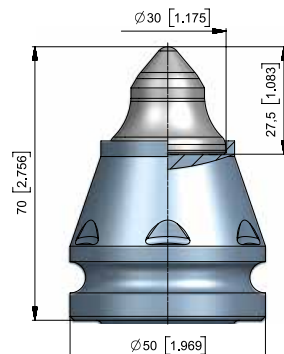
■ **BKH47**
BS38H-22.5070 



■ **BKH47P**
BS38H-22.5070P 



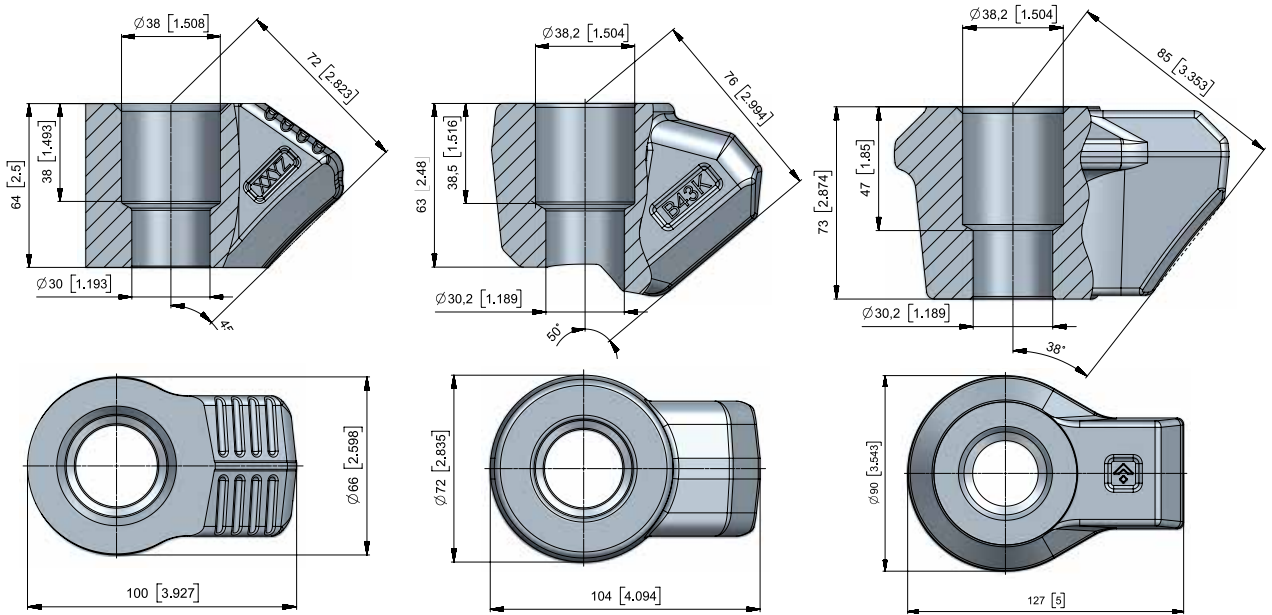
■ **BKH92**
BS38H-30.6064 



■ **BKH101**
BS38H-69.5070 

HOLDERS

> SHANK SYSTEM – Ø 38/30 MM – 1,5/1,18"



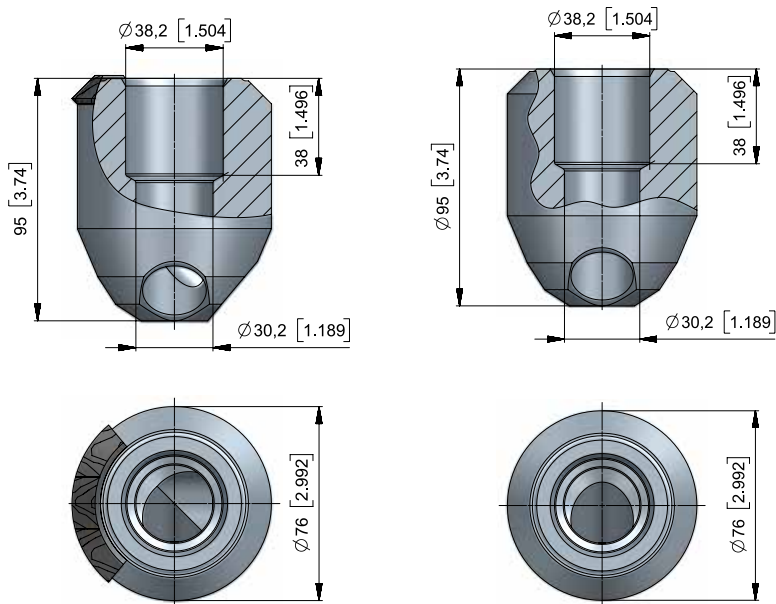
• BHR38
B43H



• BHR113
B43K



• BHR77
B320



• BHR163
B76/P

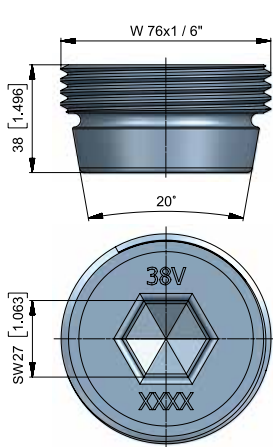


• BHR216
B76

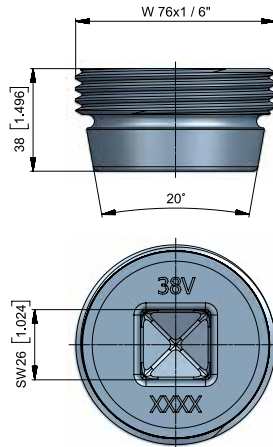




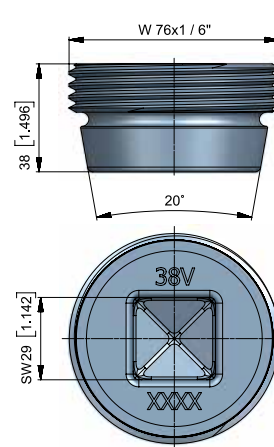
SCREW CONNECTIONS



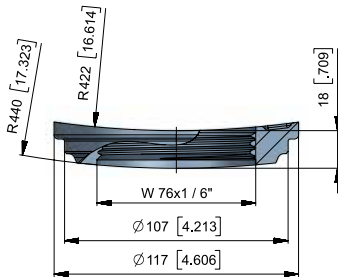
■ **BRV08**
BRV75/38LV 



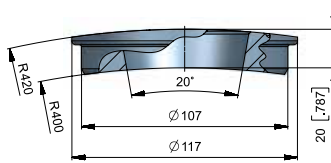
■ **BRV10**
BRV75/38LV/4 



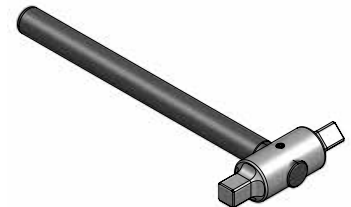
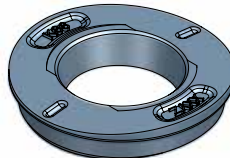
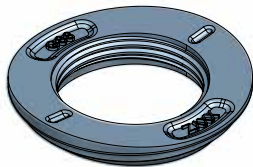
■ **BRV23**
BRV75/38LV/4/29 



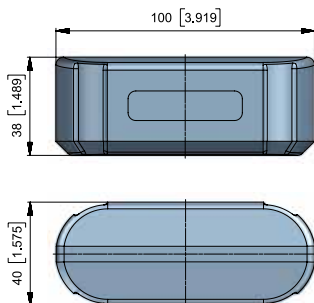
■ **BRV02**
BRV-G88/L 



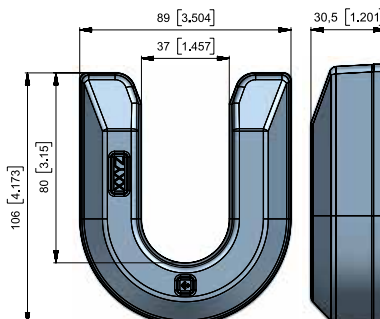
■ **BRV03**
BRV-K88/L 



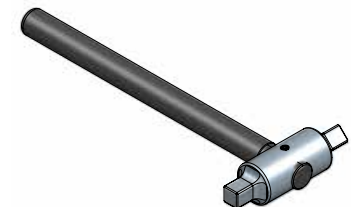
■ **BRV35**
BRVSW29



■ **BRV32**
BRV-AK 



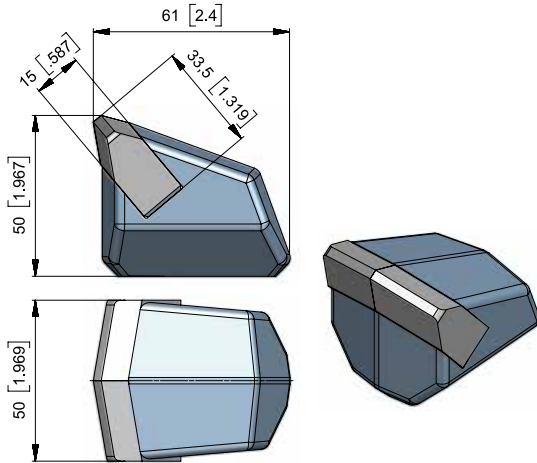
■ **BRV49**
BRV106x89x31 



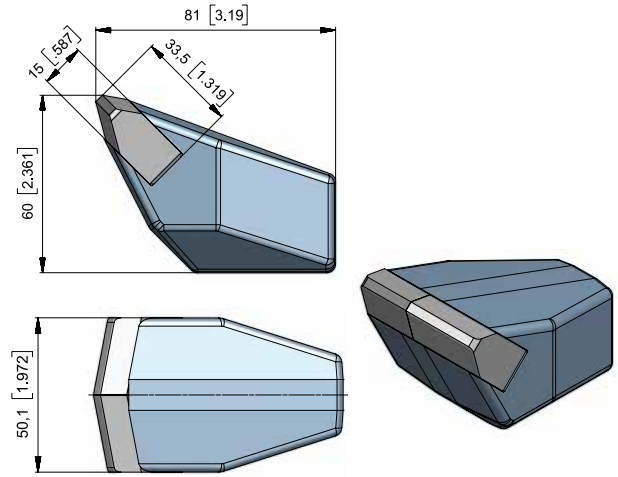
■ **BRV34**
BRVSW26

Art-No	Description	Application / info	Packaging units
Casing screw connections for walls 30 mm thick			
Fitting Screw BRV20			
BRV19	BRV-G16-14	d=460	25
BRV18	BRV-K16-14	d=460	25
Casing screw connections for walls 40 mm thick			
Fitting screw BRV08			
BRV04	BRV-G64/B	d=620-640	15
BRV05	BRV-K64/B	d=620-640	15
BRV14	BRV-G64/L	d=620-640	15
BRV15	BRV-K64/L	d=620-640	15
BRV02	BRV-G88/L	d=880	15
BRV03	BRV-K88/L	d=880	15
BRV06	BRV-G118/L	d=1180	15
BRV07	BRV-K118/L	d=1180	15
BRV12	BRV-G150/L	d=1500-1800	15
BRV11	BRV-K150/L	d=1500-1800	15
Fitting screw BRV16			
BRV30	BRV-G80-100-B	d=800-1000	15
BRV31	BRV-K80-100-B	d=800-1000	15
Casing screw connections for walls 50 mm thick			
Fitting screw BRV17			
BRV21	BRV-G149-23	d=1400-1500	15
BRV22	BRV-K140-24,5	d=1400-1500	15
Screw connections			
BRV08	BRV75/38LV	(6kt.SW27)	15
BRV10	BRV75/38LV/4	(4kt.SW26)	15
BRV16	BRV75/37/12°/BV		15
BRV17	BRV75/48/4		15
BRV20	BRV60/29/4		25
BRV23	BRV74/38/LV/4	(4kt.SW29)	15
Other			
BRV32	BRV-AK	Stop wedges	15
BRV49	BRV106X89X31	Locking for BRV32	15
SI116	O-Ring 5x60		

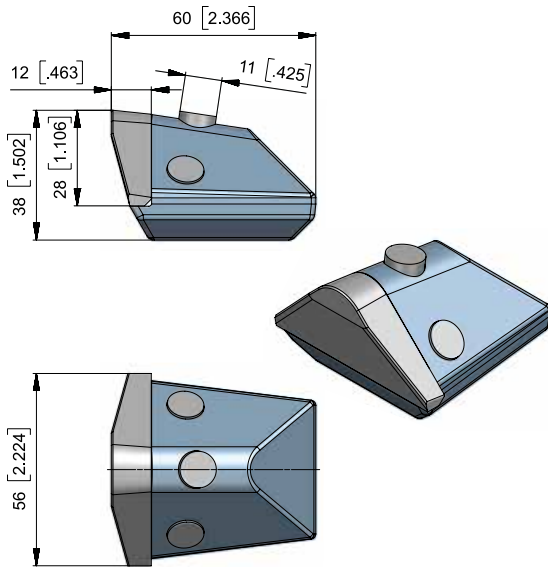
SCRAPER BLADES




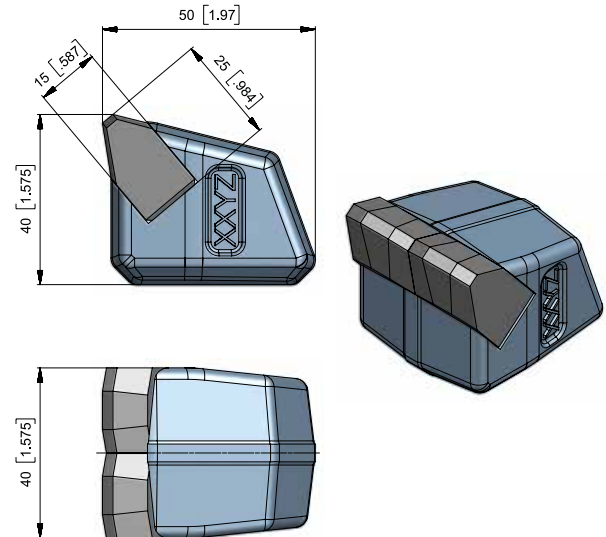
• **BFZ51**
BFZ51 



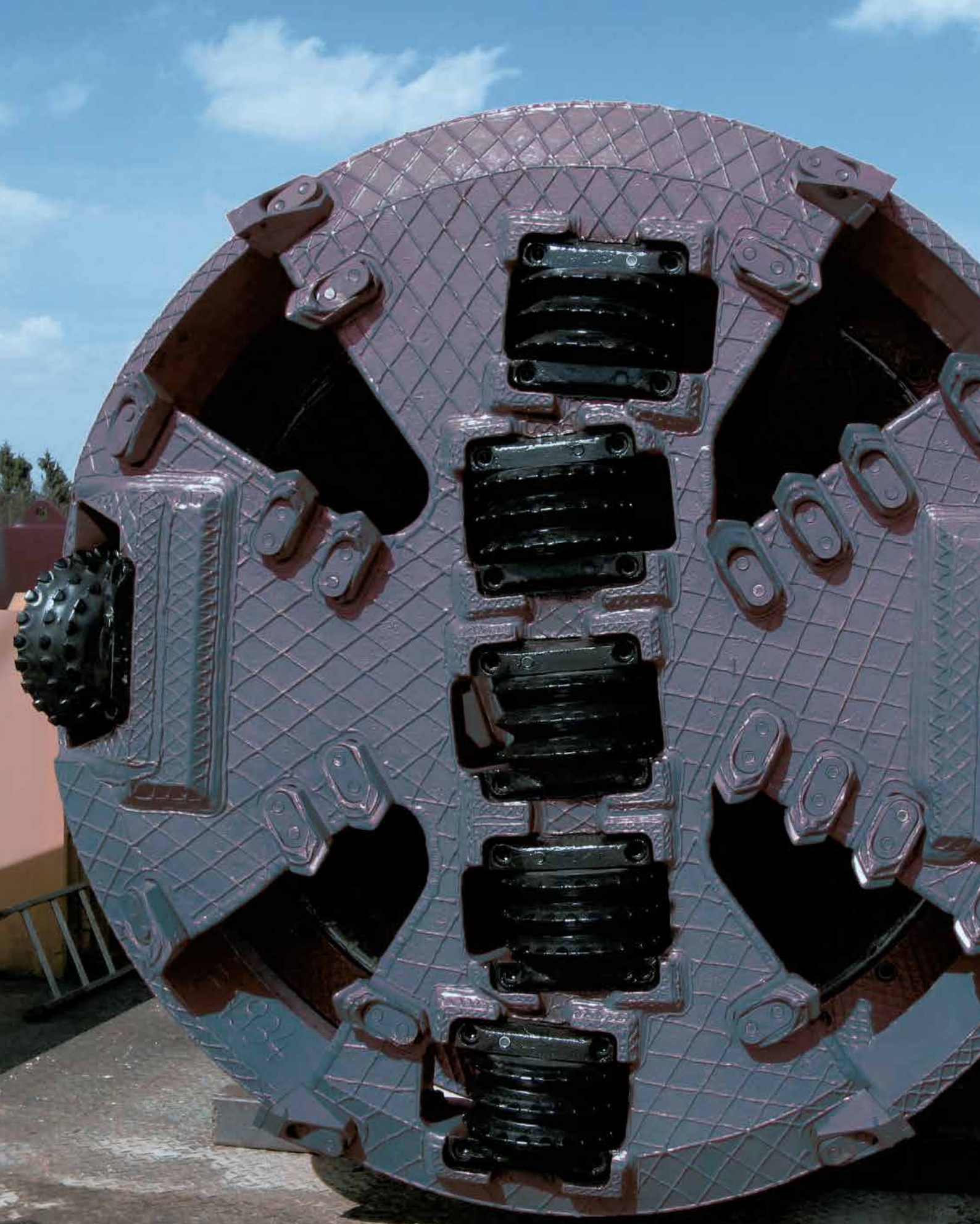
• **BFM08**
BFM112x50/S 



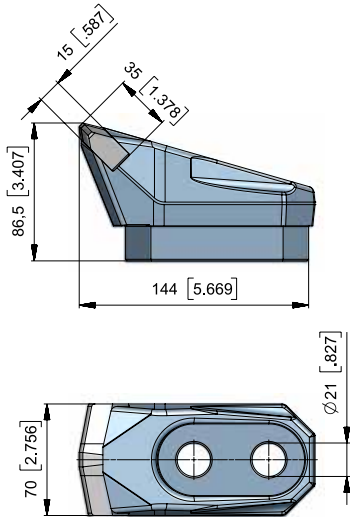
• **BFZ163**
BFZ56 



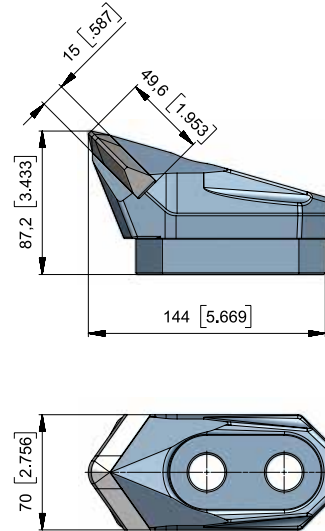
• **BFZ362**
BFZ50x40x40 



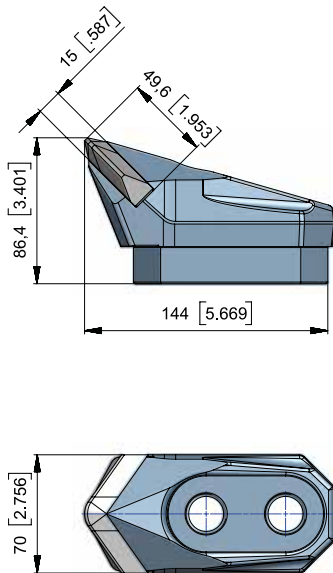
SCRAPER BLADES



■ **BFM07**
BFM144x70



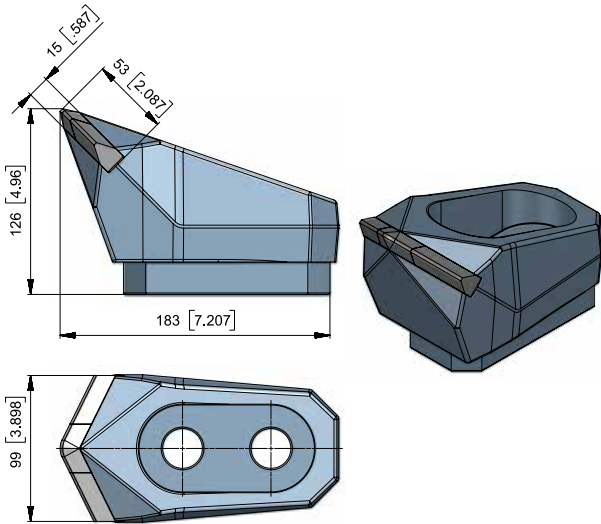
■ **BFM16**
BFM144x86x70



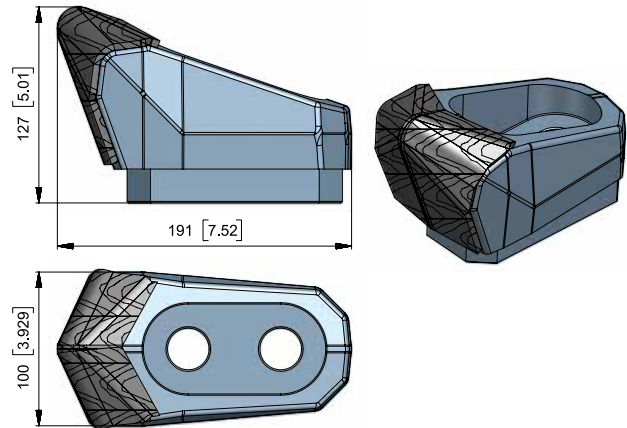
■ **BFM70**
BFM144x86.4x70



TRENCHLESS

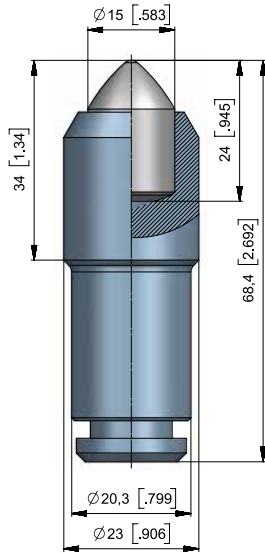


■ **BFM71**
BFM183x126x100 

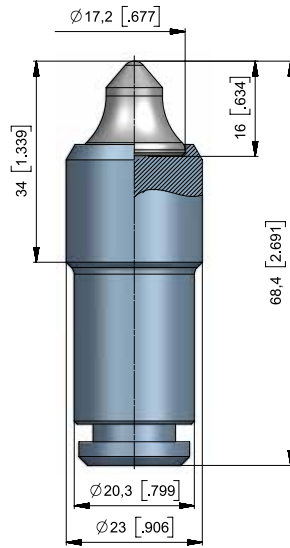


■ **BFM102**
BFZ191x127x100 

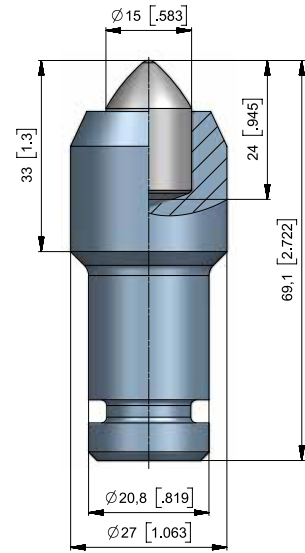
HDD TOOLS



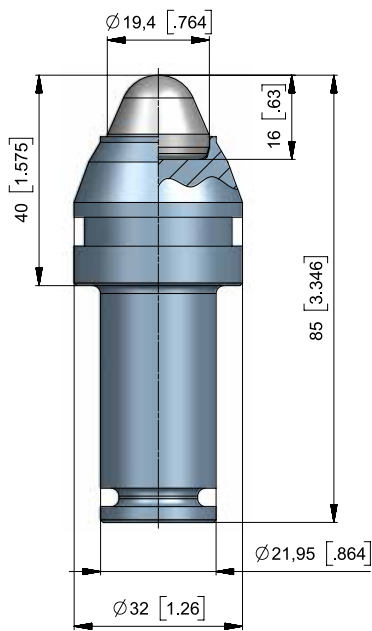
• **BSR187**
BG20X-15.2334



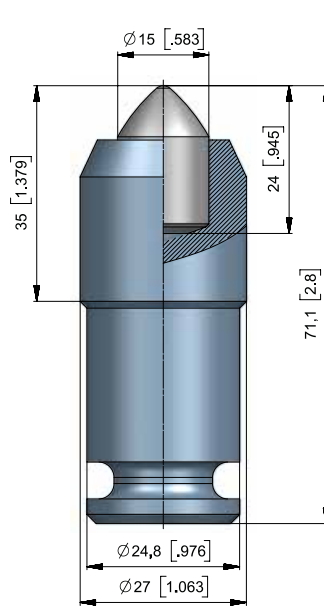
• **BSR186**
BG20X-62.2334



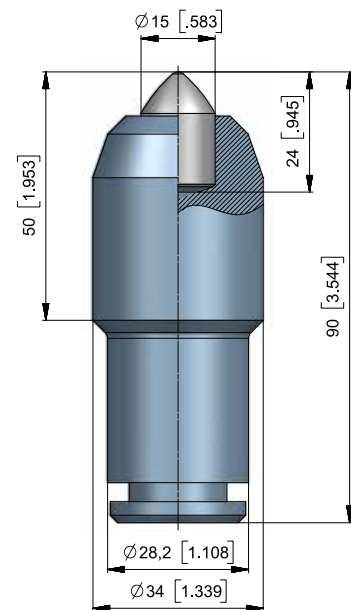
• **BSR93**
BG21X-15.2733



• **BC1020**
BG22X-19.2340



• **BSR115**
BG25F-15.2735



• **BSR110**
BG28F-15.3450



ACCESSORIES



▪ **BZ44**
Bit extractor for Mini bit



▪ **BZ42**
Bit extractor for BSH on BC-Series



▪ **BZ43**
Bit extractor for BSH, BC and BSK-Series



▪ **BZ38**
Wedge puller for shaft diameter 20-25



▪ **BZ33**
Assembly tool for SI36



▪ **BZ31**
Disassembly tool for SI36



▪ **BZ41**
Assembly tool for SI26



▪ **BZ32**
Disassembly tool for SI26



▪ **BZ22**
Bit puller for BTK-Series



▪ **BZ37**
Assembly tool for SI216



▪ **BZ36**
Disassembly tool for SI216



▪ **BZ05**
Bit puller for head diameter 60



■ **BZ35**
Assembly tool for SI239



■ **BZ34**
Disassembly tool for SI239



■ **BZ39**
Wedge puller for
shaft diameter 30-38



■ **SRZ02**
Plier for SR83/1, SR81, SR65,
SR61, SR56 and SR54



■ **BZ12**
Bit puller for BKH-Series



■ **BZ18**
Bit puller with copper
disk for BKH-Series



■ **BZ16**
Bit extractor for Roll
pin with diameter 10



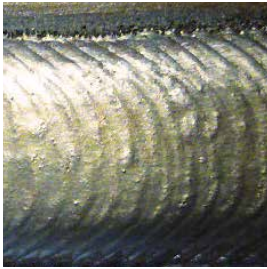
■ **BZ30**
Bit extractor for Roll
pin with diameter 16



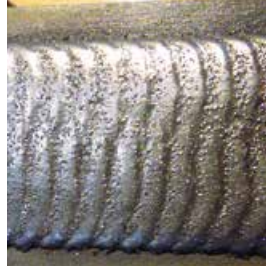
■ **BZ40**
Wedge puller for
stepshank 43/35

FLEXIBLE WEAR PROTECTION

> BeCoat® HARDFACING TYPES



FeCr
hardfacing



NiCr + FTC
hardfacing



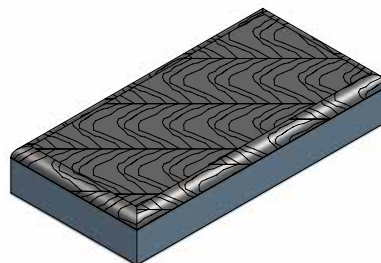
TC grit
hardfacing

> BeCoat® ADVANTAGES

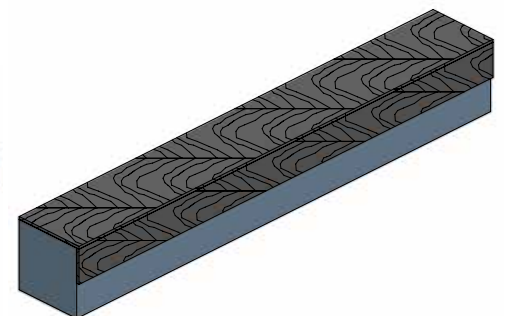
- Cost reduction due to less downtime
- Coating thickness ≤ 6mm
- Evenly distributed fused tungsten carbide (FTC) and low dilution
- Engineering and consulting
- Proven to withstand even the harshest environments



▪ **BA73**
BA72x40x17 



▪ **BBM386**
BBM100x50x16 



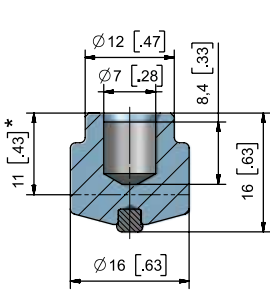
▪ **BBM391**
BBM180x26x26 

EXTENSIVE WEAR PROTECTION

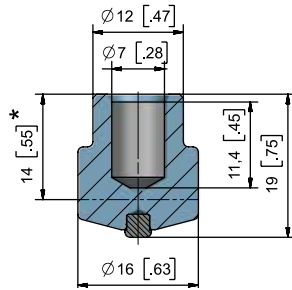


► OVERVIEW

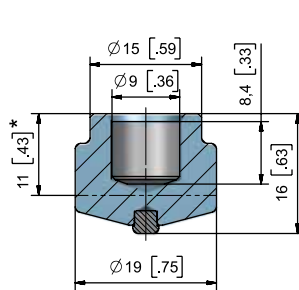
BETEK can provide the appropriate stud welding machine for the TungStuds wear protection system.



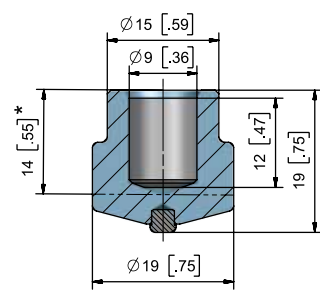
■ **BTS01** BTSD16/16 



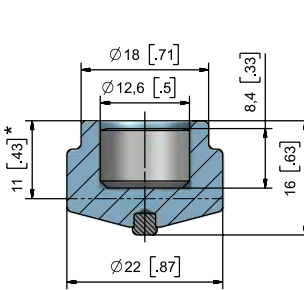
■ **BTS02** BTSD16/19 



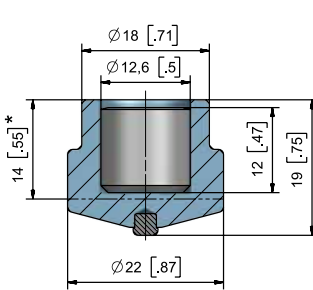
■ **BTS03** BTSD19/16 



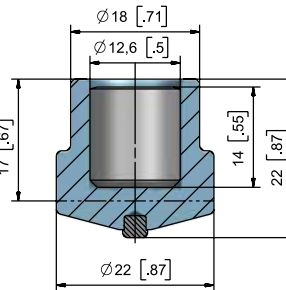
■ **BTS04** BTSD19/19 



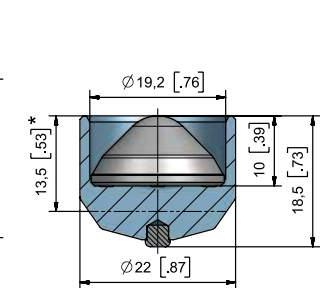
■ **BTS05** BTSD22/16 



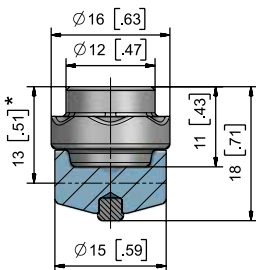
■ **BTS06** BTSD22/19 



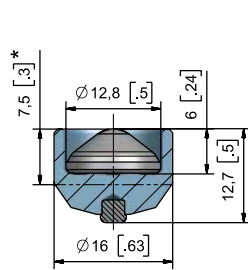
■ **BTS07** BTSD22/22 



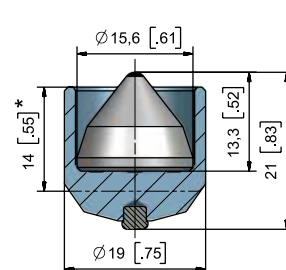
■ **BTS08** BTSD22/18,5SG 



■ **BTS10B** BTSD16/18B 



■ **BTS20** BTSD16/12,5SG 

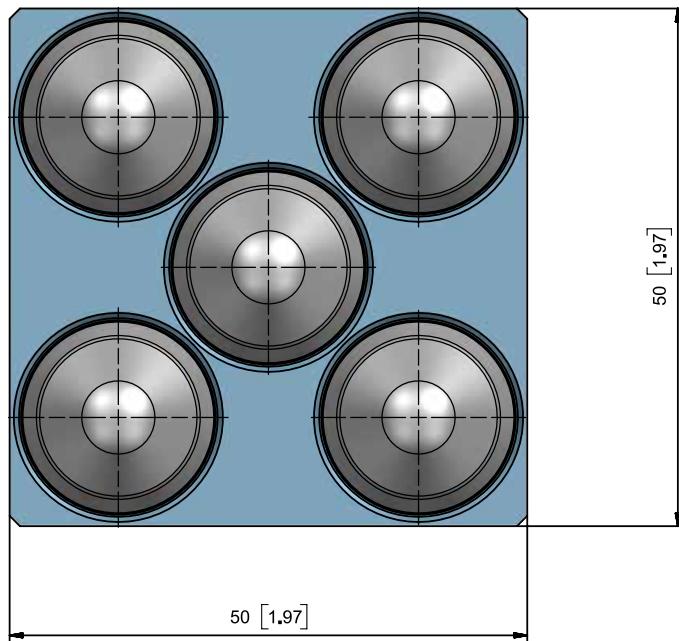
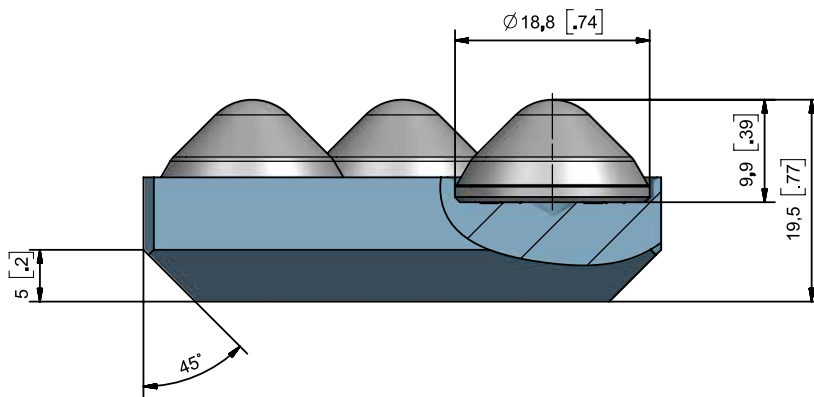


■ **BTS100** BTSD19/15,6SG 

*Height after welding

EXTENSIVE WEAR PROTECTION

► BTS-PLATES



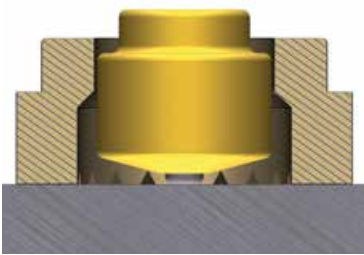
DIMENSIONS

Width in mm	Length in mm
50	50
75	75
100	100
125	125
150	150

Other sizes on request

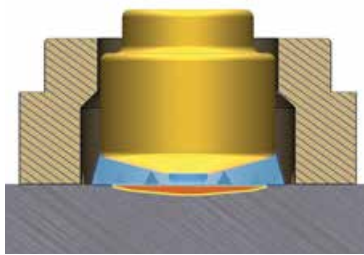
WELDING PROCESS

1



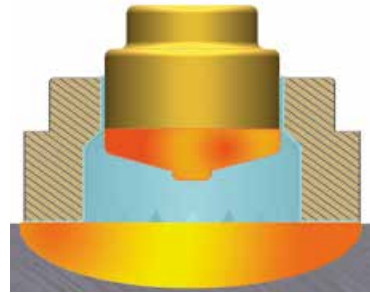
- The TungStud should be placed on the steel surface
- The ceramic ferrule protects the welding area around

2



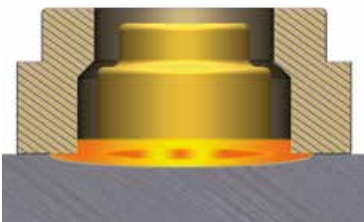
- Current flow is applied
- The TungStud raises up as soon as the arc ignites

3



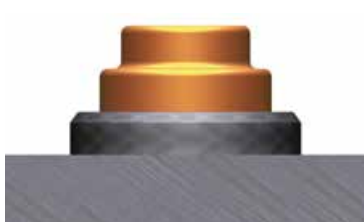
- The arc causes a specific melting of the TungStud and the steel surface

4



- The TungStud plunges into the melted steel surface

5



- The welding connection between TungStud and steel surface is completed

BENEFITS

- Wear resistant thanks to the carbide core
- Quick welding process
- Suitable for uneven surfaces
- Simply replaceable
- Less maintenance > Higher productivity
- Less downtime > Cost reduction

PERFORMANCE

› CUTTING WEAR PROTECTION

- Grid pattern is recommended
- Cutting wear protection due to the conical carbide shape

EXTENSIVE WEAR PROTECTION



› ROCK BOX EFFECT

- Grid pattern is recommended
- Rock Box Effect due to the cylindrical carbide shape

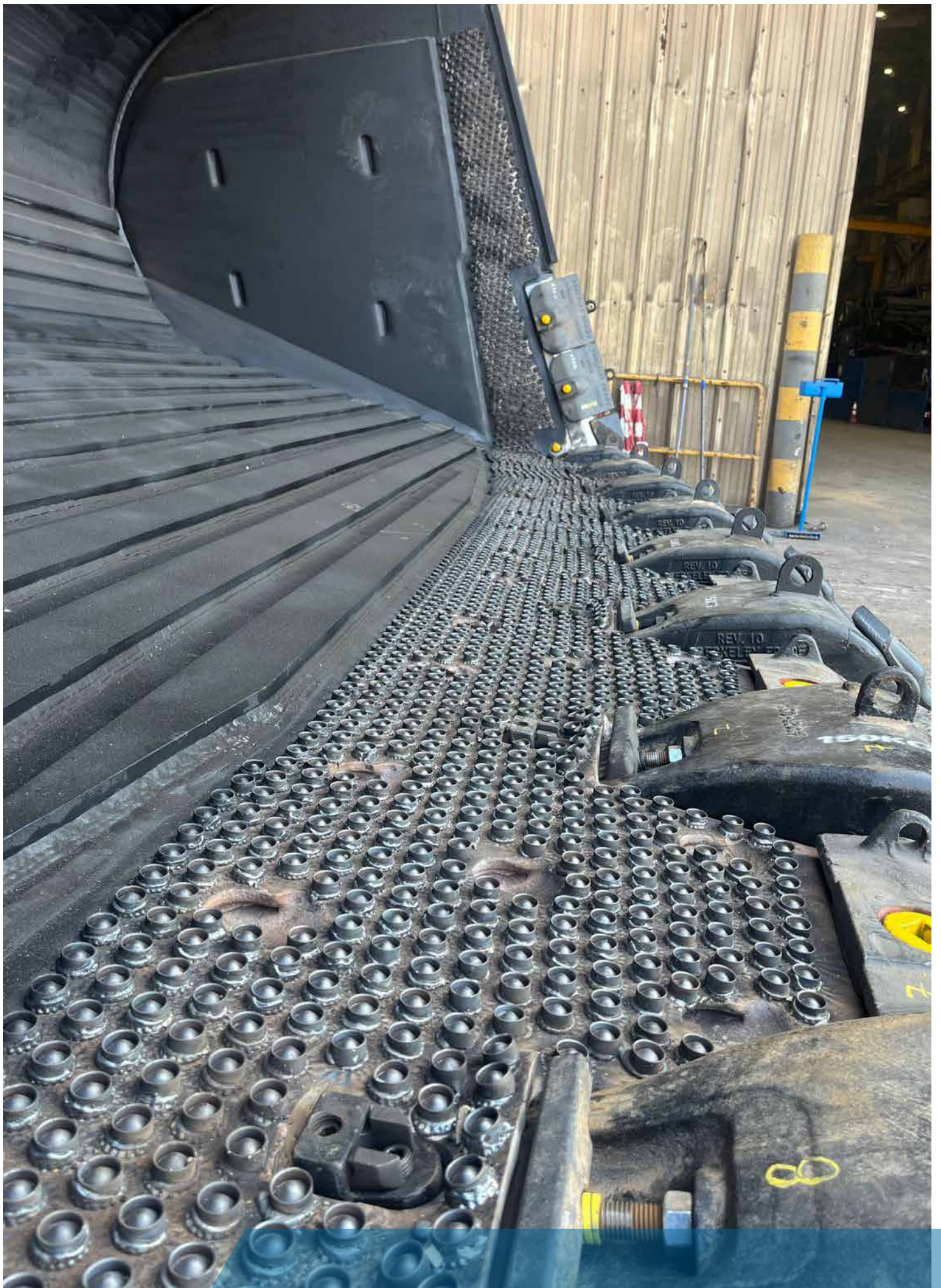
EXTENSIVE WEAR PROTECTION













➤ BETEK



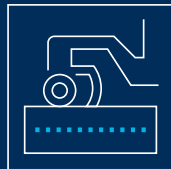
- ROAD MILLING
- SURFACE MINING
- STABILISING

SURFACE TECHNOLOGIES



- FOUNDATION DRILLING
- MINING
- TRENCHING
- TUNGSTUDS
- DRUM CUTTERS

UNDERGROUND TECHNOLOGIES



- AGRICULTURE
- GRADER TOOLS
- FORESTRY & RECYCLING

ENVIRONMENTAL TECHNOLOGIES



- CRUSHING & MIXING
- TUNGSTEN CARBIDE
- RAIL TRACK CONSTRUCTION
- INDUSTRIAL SOLUTIONS

INDUSTRIAL TECHNOLOGIES



- TIRE STUDS
- SCARIFIER CUTTERS
- POLE TIPS
- HORSESHOE TIPS

➤ SITEK A BETEK BRAND



Service number
+49 (0) 7422. 565-0

info@betek.de
www.betek.de