



MADE IN GERMANY



UNDERGROUND TECHNOLOGIES

TRENCHING



BETEK TUNGSTEN CARBIDE TOOLS



UNDERGROUND
TECHNOLOGIES

- FOUNDATION DRILLING
- MINING
- TRENCHING
- TUNGSTUDS
- DRUM CUTTERS

IN USE WORLDWIDE

TUNGSTEN CARBIDE AND STEEL

Steel and carbide are two materials with totally different expansion coefficients when subjected to heat. Nevertheless, it is of steel and tungsten carbide that our tools are made, with tungsten carbide for the wear-resistant tip, and steel for the tool shank. Since tools reach high temperatures during use, extreme tensile stresses are generated. These stresses are absorbed by a special brazing material that joins the tungsten carbide tip to the steel section.

We have developed our own methods and systems for this brazing process, which is carried out on fully automated machines with the process covered in an inert protective gas. Manufacturing parameters are fully monitored and documented to ensure consistent quality. Afterwards, brazing shear strengths are checked to ensure that our "Masters of the construction site" lose no time due to broken tools!



BETEK HIGH-TECH TOOLS



1

CUSTOMER SERVICE

- Efficient, customised solutions based on flexible structures
- Personalised, quick response to customer requirements



2

RESEARCH & DEVELOPMENT

- Quick creation of samples and prototypes
- Competitive pricing thanks to close cooperation with all production units



3

TUNGSTEN CARBIDE MANUFACTURING

- High-purity raw materials are used for high strength
- Consistently high, pore-free tungsten carbide quality through precise process control thanks to years of experience and know-how



4

SOLDERING PRODUCTION UNIT

Production facilities and processes specially developed to perfection by experts in the combination of tungsten carbide and steel



5

AUTOMATION

Maintaining a competitive edge on the global market thanks to a high degree of automation and flexible manufacturing facilities



6

QUALITY ASSURANCE

Continuous quality testing of the entire manufacturing chain all the way up to the installation site, in conformity with DIN ISO 9001:2000 and DIN EN ISO 14001



7

TRAINING

User training courses at BETEK or on-site for sustainable, long-term commercial success and customer satisfaction



8

LOGISTICS

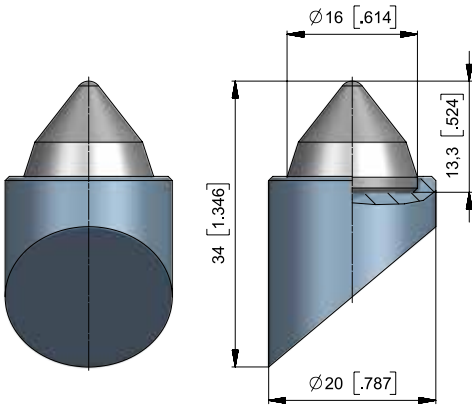
Quick responses thanks to:

- the use of the very latest IT and enhanced logistics networking
- Standard products kept in stock

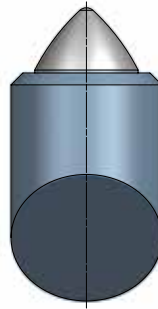
OUR KNOW-HOW COMBINED WITH STATE-OF-THE-ART PRODUCTION TECHNOLOGIES GUARANTEES THE FINEST QUALITY, MADE IN GERMANY



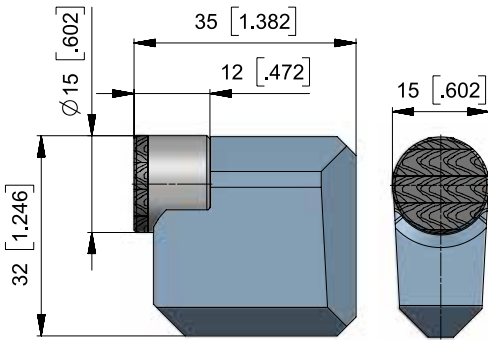
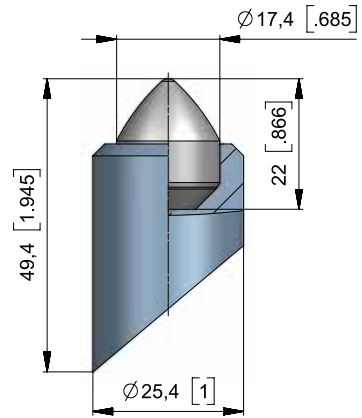
WELD-ON TEETH



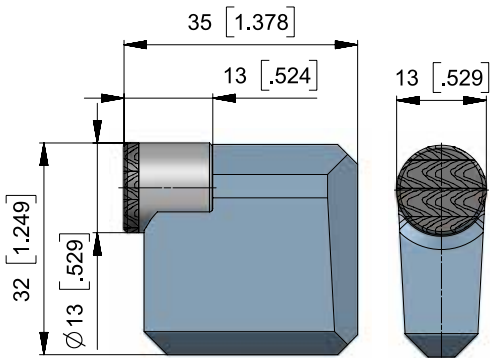
■ **BFZ158**
BFZ3



■ **BFZ1028**
BFZ25.4x49.4

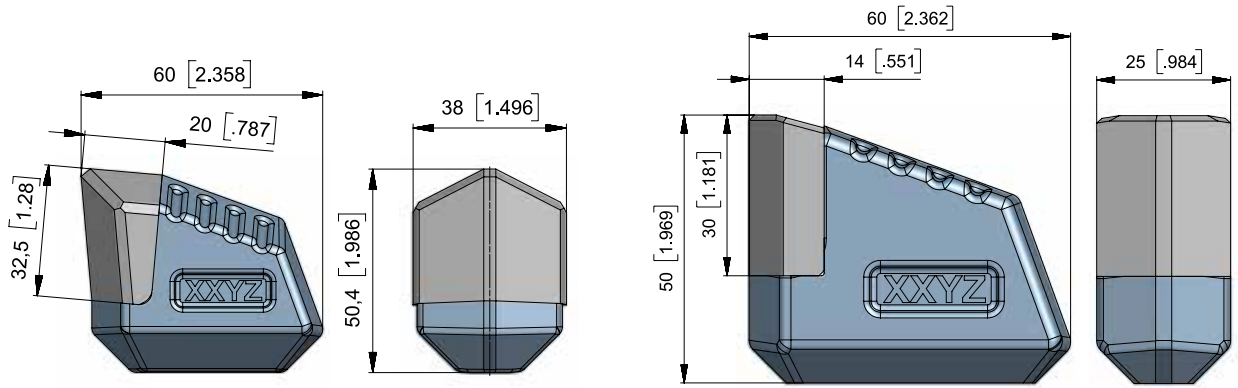



■ **BFZ370**
BFZ35x32x15



■ **BFZ372**
BFZ35x32x13

WELD-ON TEETH



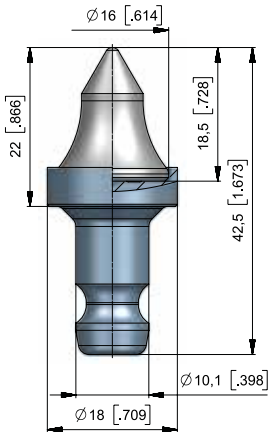
• **BFZ326**
BFZ38/M 

• **BBM75**
BBM25x50 

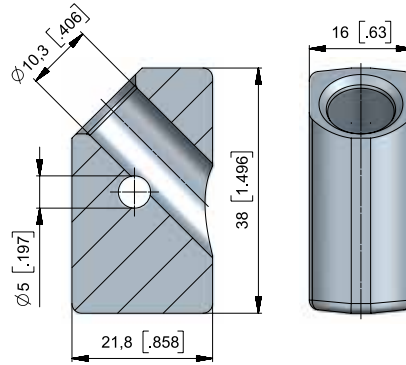


ROUND SHANK CUTTER BITS

► SHANK SYSTEM – Ø 10,1 MM/0,40"

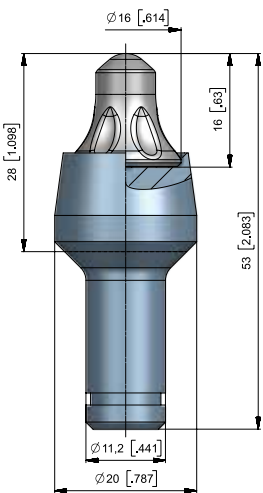


• **BM92**
BG10S-61.1822

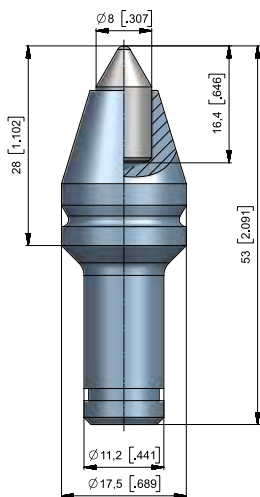


• **BHR256**
B10.1645

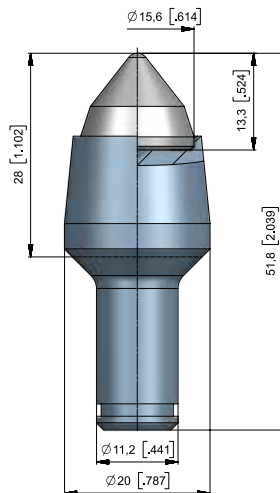
► SHANK SYSTEM – Ø 11,2 MM/0,44"



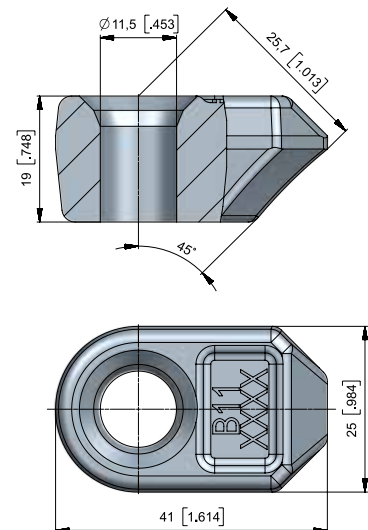
• **BM10**
BG11W-61.2028



• **BM11**
BM8-11.3



• **BM46**
BM3-11.3

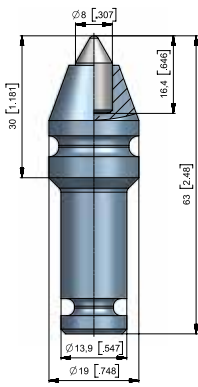


• **BHR03**
B11

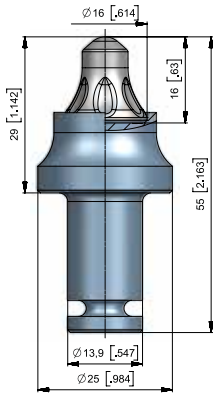
ROUND SHANK CUTTER BITS



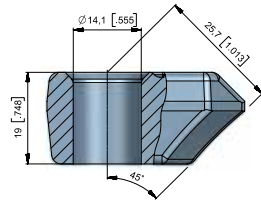
▶ SHANK SYSTEM – Ø 14 MM/0,55"



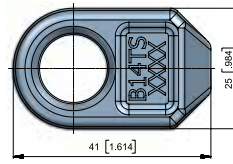
• **BM84**
BG14X-08.1930



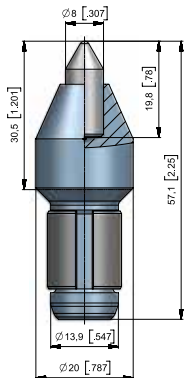
• **BM76**
BG14X-61.2529



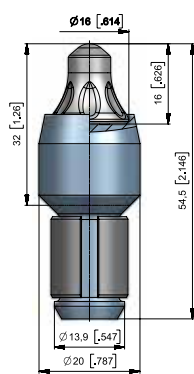
• **BHR171**
B14TS



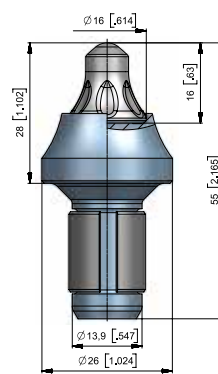
▶ SHANK SYSTEM – Ø 14 MM/0,55"



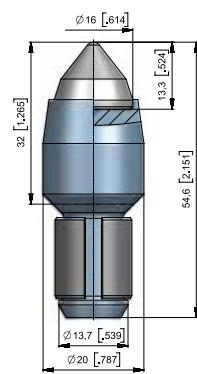
• **BM56**
BM8-14/2



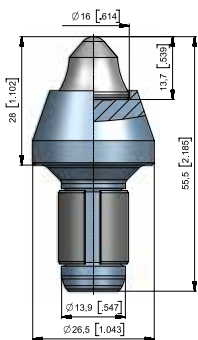
• **BM55**
BG14H-61.2032



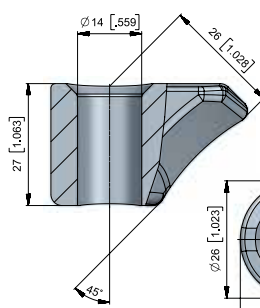
• **BM82**
BG14H-61.2628



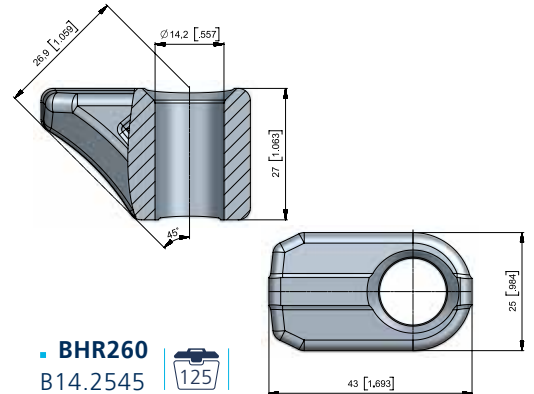
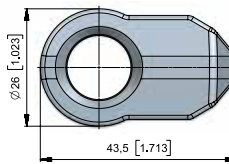
• **BM60**
BM3-14/H



• **BM93**
BG14H-61.2728



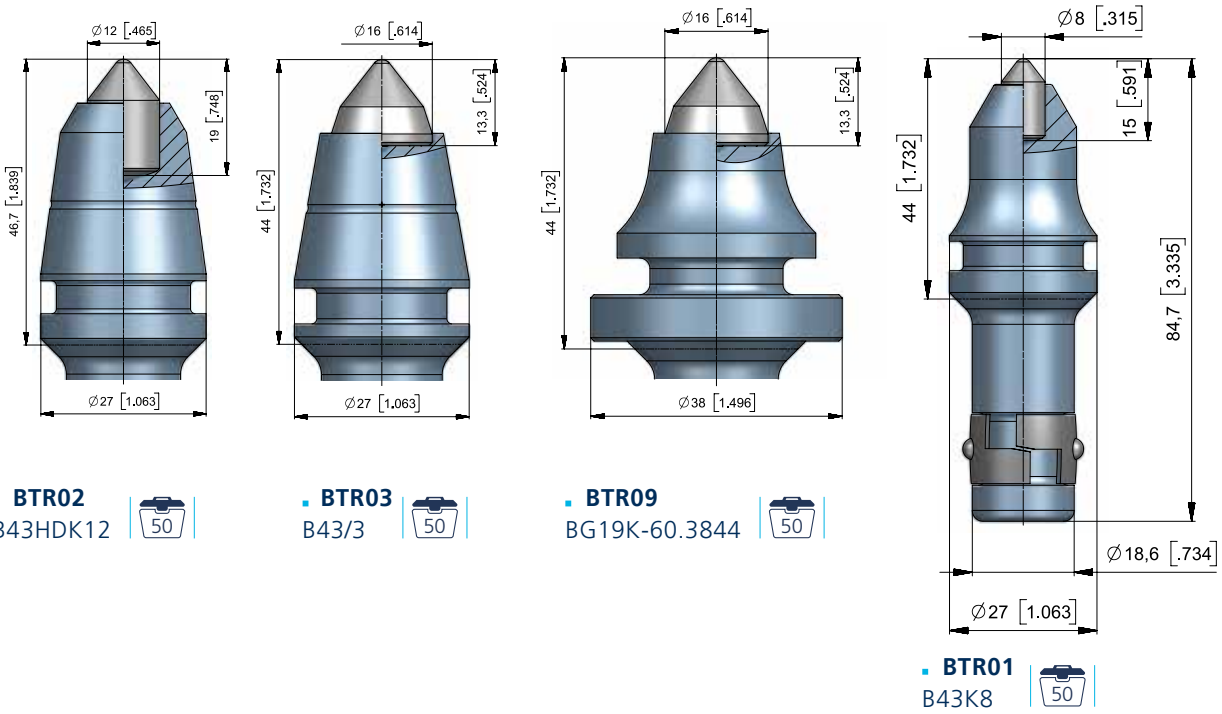
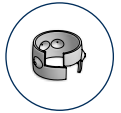
• **BHR109**
B14



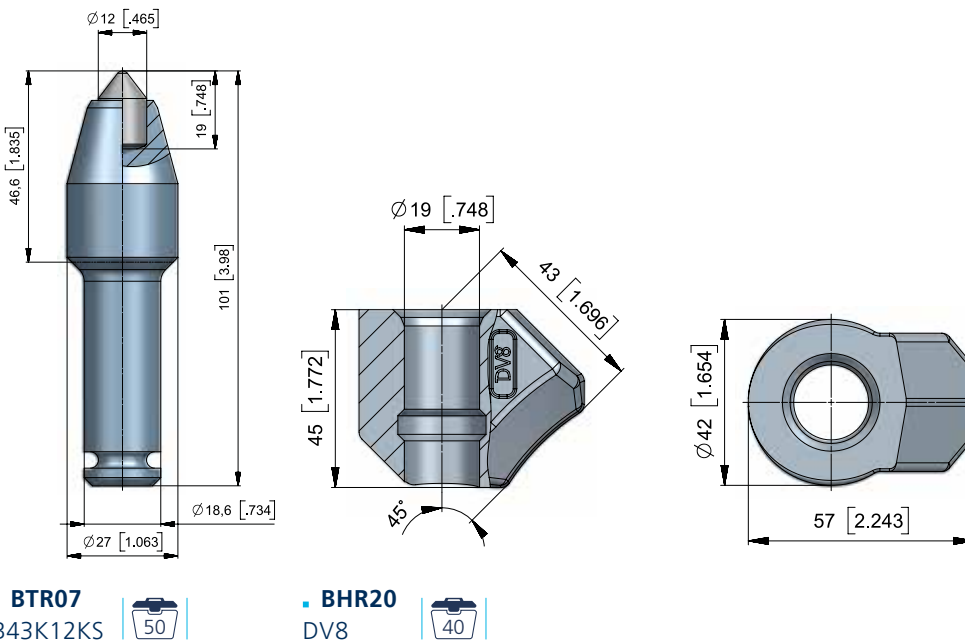
• **BHR260**
B14.2545



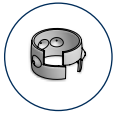
► SHANK SYSTEM – Ø 18,7 MM/0,74"



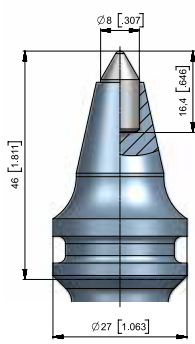
► SHANK SYSTEM – Ø 18,7 MM/0,74"



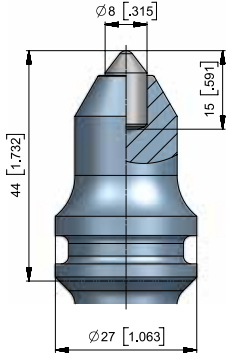
ROUND SHANK CUTTER BITS



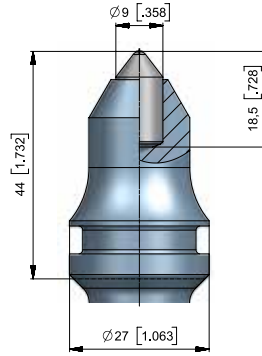
▶ SHANK SYSTEM – Ø 19,4 MM/0,76"



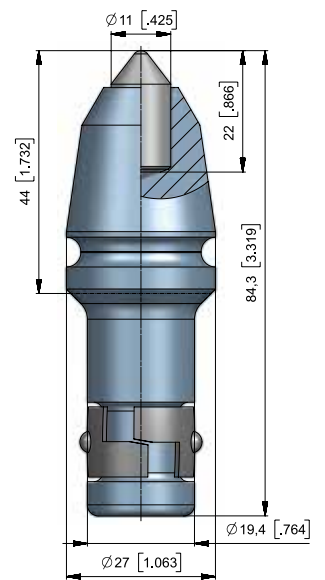
▪ **BSK19**
B1K8K 



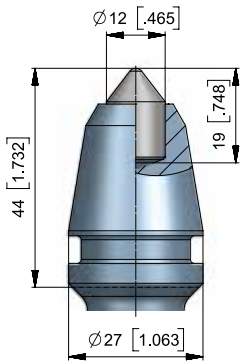
▪ **BSK22**
B1K8-K/2 



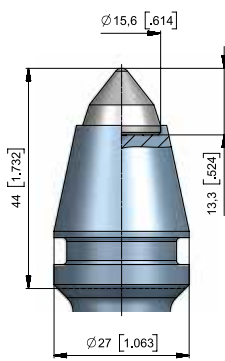
▪ **BSK15**
B1K9K 



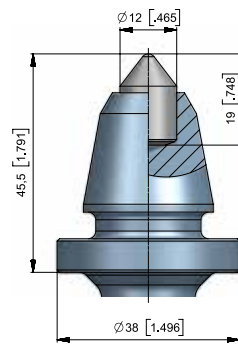
▪ **BSK16**
B1HDK11-K 



▪ **BSK17**
BG20K-12.2744 



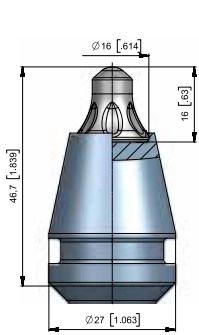
▪ **BSK23**
B3-K/2 



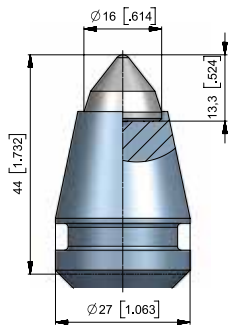
▪ **BSK21**
B1-12/38-K 



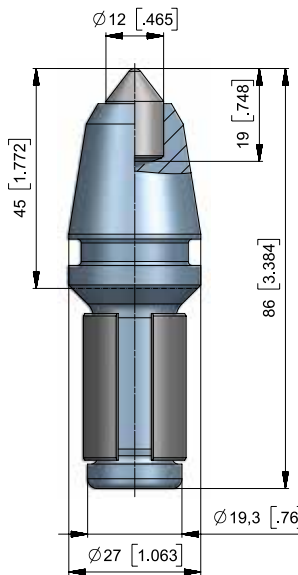
► SHANK SYSTEM – Ø 19,4 MM/0,76"



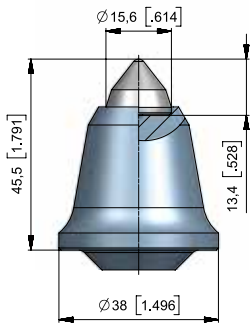
• BSH204
B4 



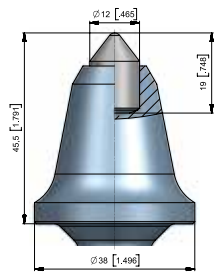
• BSH09
B3 



• BSH05
B1HDK12 

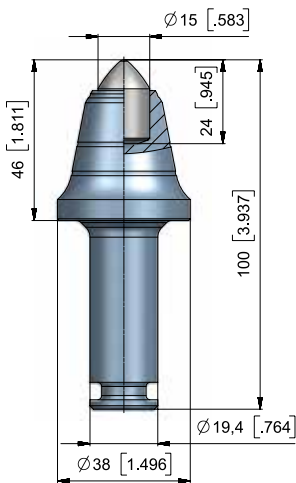


• BSH211
BG20H-60.3846 

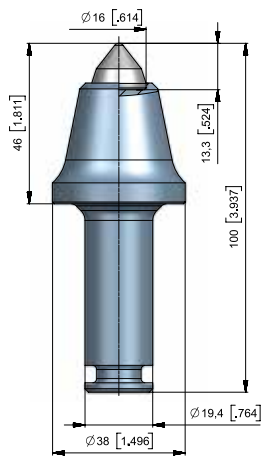


• BSH210
B1-12/38 

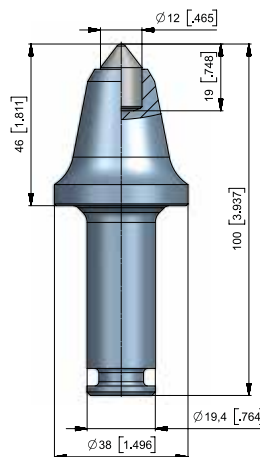
► SHANK SYSTEM – Ø 19,4 MM/0,76"



• BC68
BG20F-15.3846 



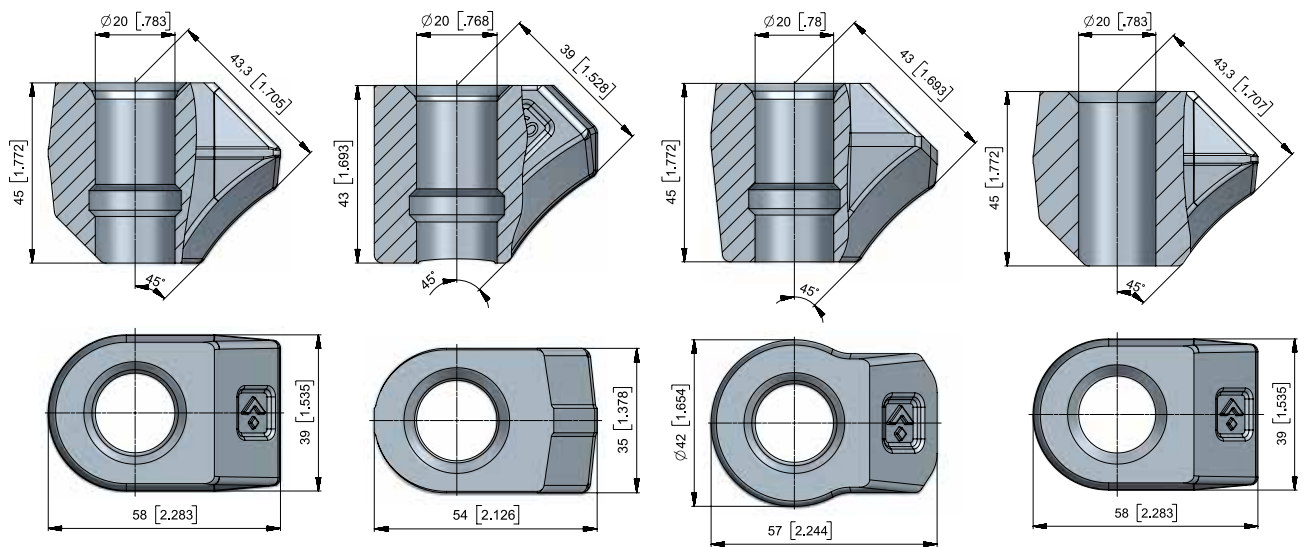
• BC26
B3KS 



• BC82
BG20F-12.3846 

ROUND SHANK CUTTER BITS

► SHANK SYSTEM – Ø 19,4 MM/0,76"



■ **BHR07**
DV9



■ **BHR164**
DV9-S



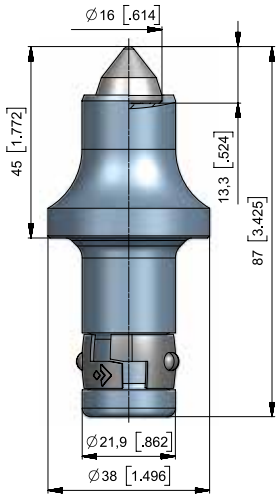
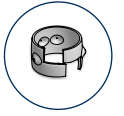
■ **BHR12**
DV12




■ **BHR05**
B10

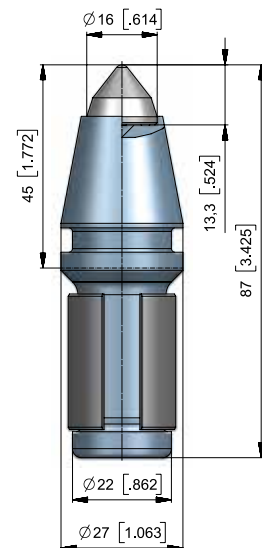
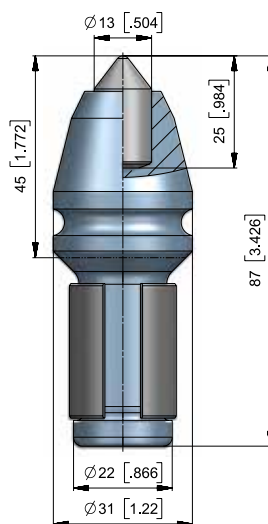
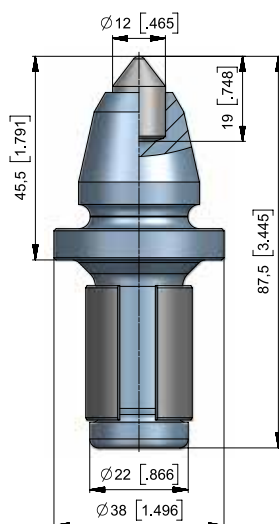
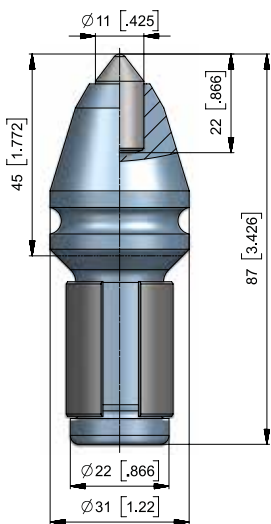
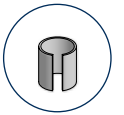


➤ SHANK SYSTEM – Ø 22 MM/0,87"



• **BC58**
BG22K-60.3845 

➤ SHANK SYSTEM – Ø 22 MM/0,87"



• **BC05**
BG22H-11.3145 

• **BC60**
BG22H-12.3846 

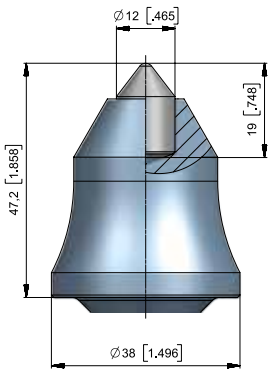
• **BC06**
BG22G-13.3145 

• **BC49**
BG22H-60.2745 

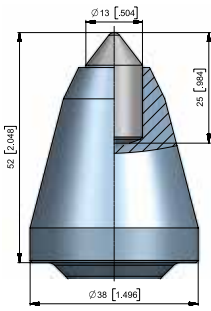
ROUND SHANK CUTTER BITS




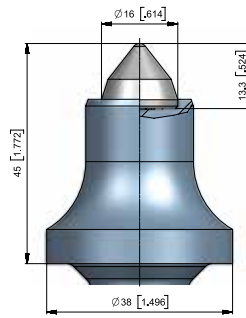
▶ SHANK SYSTEM – Ø 22 MM/0,87"




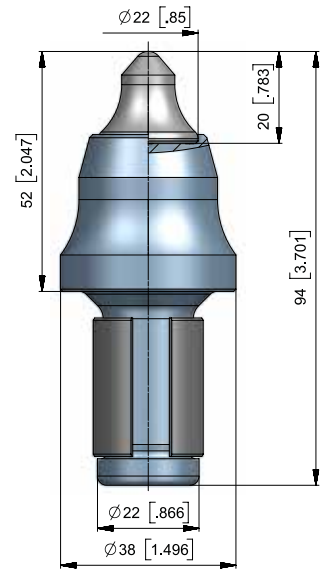
■ **BC64**
BG22H-12.3847 




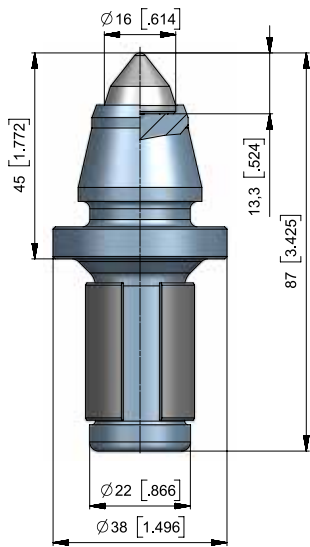
■ **BC14**
BG22H-13.3852 




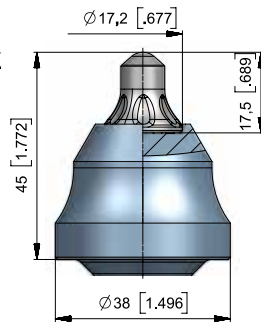
■ **BC41**
BG22H-60.3845 




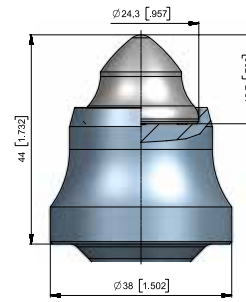
■ **BC03**
BG22H-67.3852 



■ **BC81**
BG22H-60.3845 



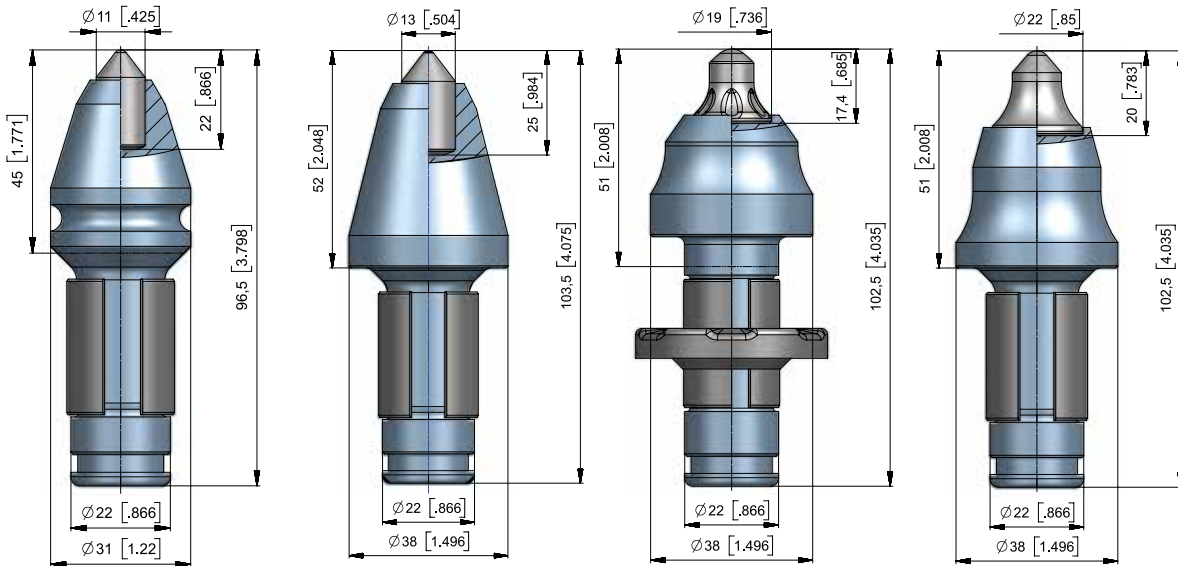
■ **BC04**
BG22H-62.3845 



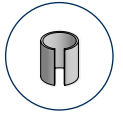
■ **BC43**
BG22H-68.3844 



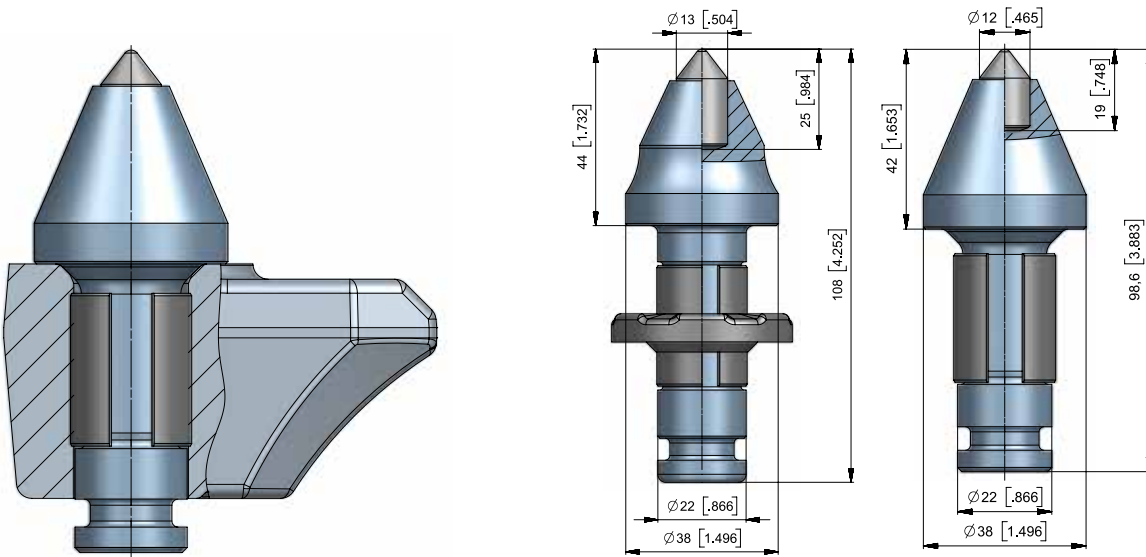
► SHANK SYSTEM – Ø 22 MM/0,87"



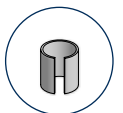
- **BC01**
BG22HW-11.3145
- **BC15**
BG22HW-13.3852
- **BC61**
BG22HW-63.4551
- **BC44**
BG22HW-67.3851



► SHANK SYSTEM – Ø 22 MM/0,87"



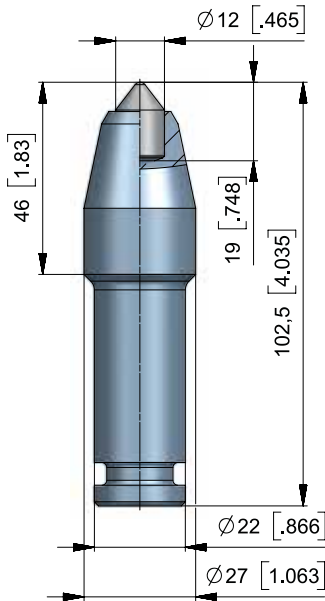
- **BC79**
BG22HF-13.4551
- **BC36**
BG22HF-12.3842



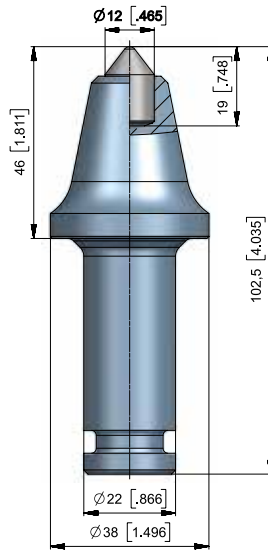
ROUND SHANK CUTTER BITS



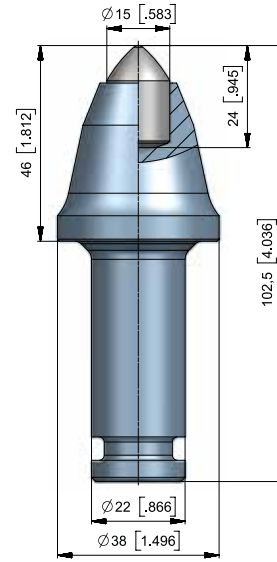
▶ SHANK SYSTEM – Ø 22 MM/0,87"



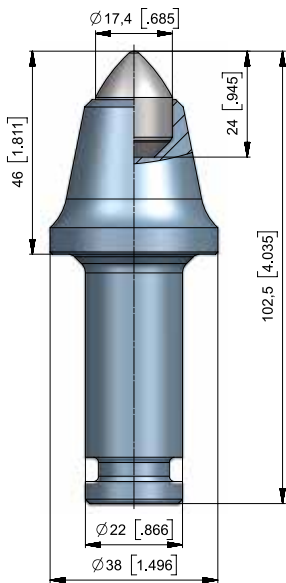
• **BC39**
B1-12KS/22



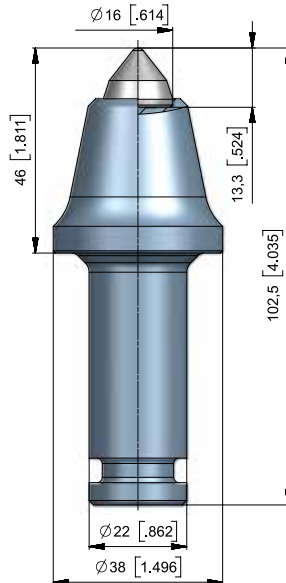
• **BC62**
BG22F-12.3846



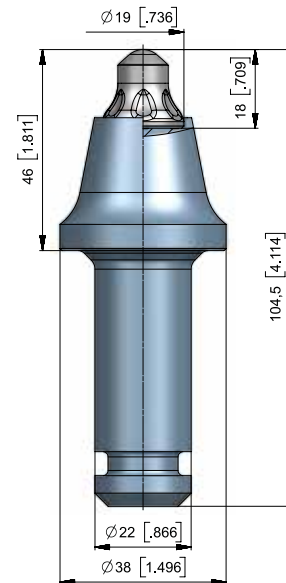
• **BC77**
BG22F-15.3846



• **BC56**
BG22F-17.3846

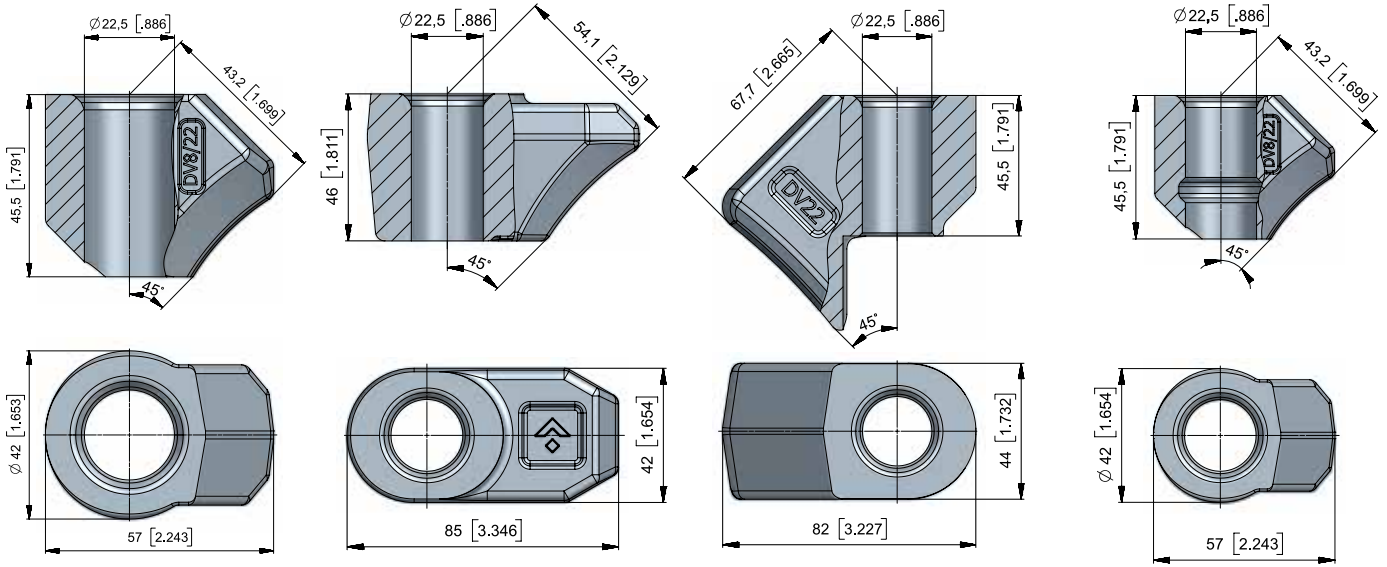


• **BC33**
BG22F-60.3846



• **BC78**
BG22F-65.3846

► SHANK SYSTEM – Ø 22 MM/0,87"



■ BHR27
DV8/22



■ BHR120
B22S



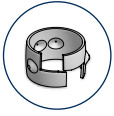
■ BHR30
DV22



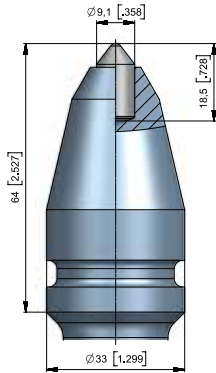
■ BHR176
DV8/22-K



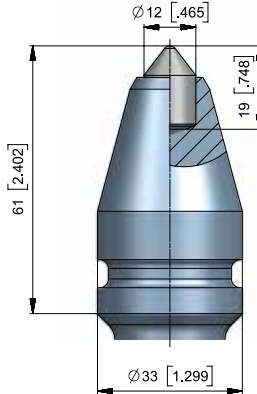
ROUND SHANK CUTTER BITS



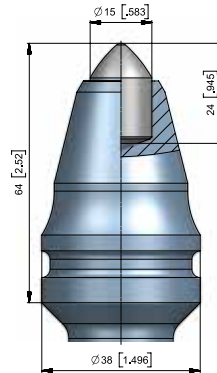
> SHANK SYSTEM – Ø 25 MM/1"



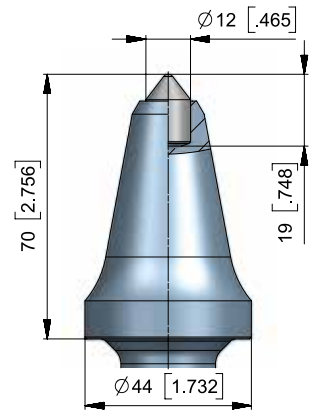
• **BTK01**
BG25-09.3364



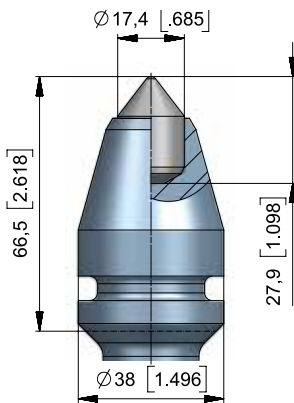
• **BTK03**
BG25K-12.3361



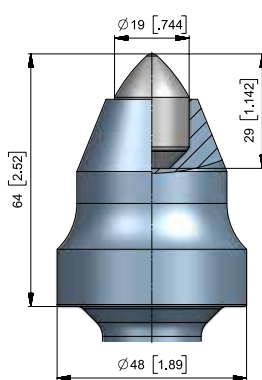
• **BTK10**
BG25K-15.3864



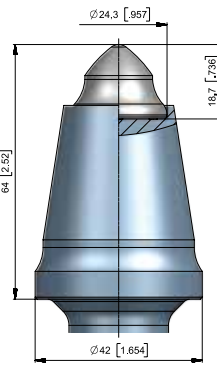
• **BTK141**
BG25K-12.4470A



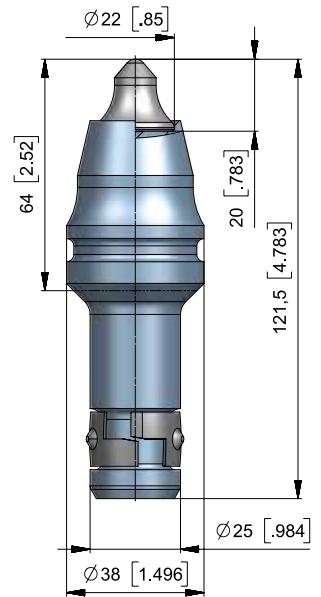
• **BTK70**
BG25K-17.3867



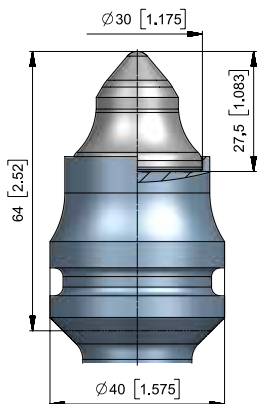
• **BTK54**
BG25K-19.4865



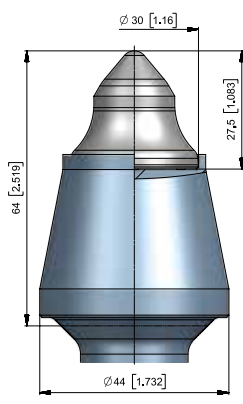
• **BTK87**
BG25K-68.4264



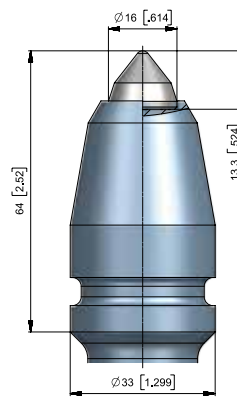
• **BTK20**
BG25K-67.3864



• **BTK23**
BG25K-69.4064



• **BTK26**
BG25K-69.4464



• **BTK16**
BG25K-60.3364

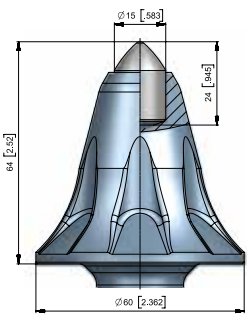
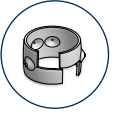




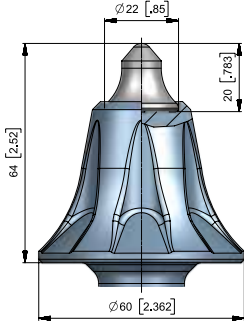


ROUND SHANK CUTTER BITS

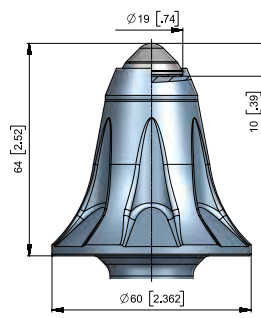
► SHANK SYSTEM – Ø 25 MM/1"



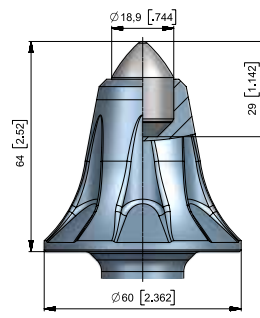
• **BTK81**
B40HDS/60 




• **BTK80**
B4022/60 

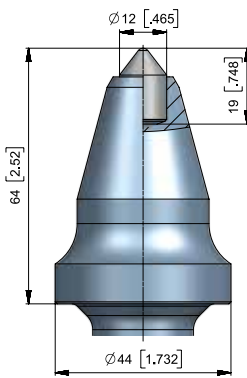


• **BTK82**
B40SG/60 

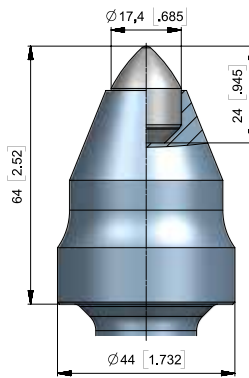


• **BTK89**
BG25K-19.6064 

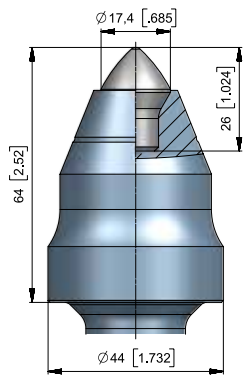
► SHANK SYSTEM – Ø 25 MM/1"



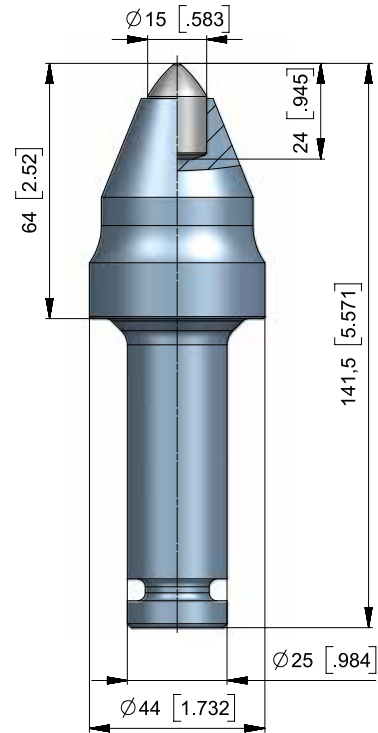
• **BTK142**
BG25F-12.4464 



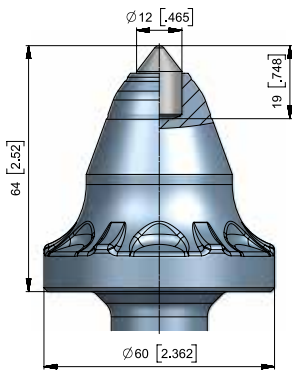
• **BTK11**
BG25F-17.4464 



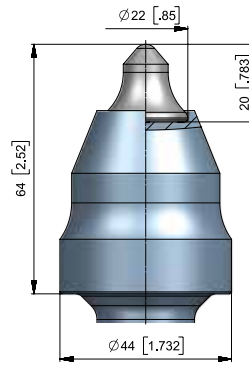
• **BTK135**
BG25F-70.4464 



• **BTK29**
BG25F-15.4464 



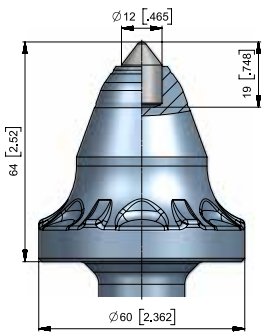
• **BTK14**
BG25F-19.4464 



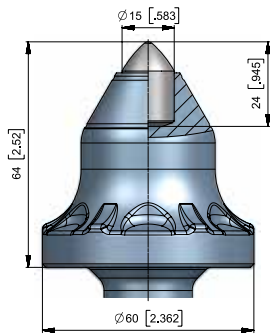
• **BTK43**
BG25F-67.4464 

ROUND SHANK CUTTER BITS

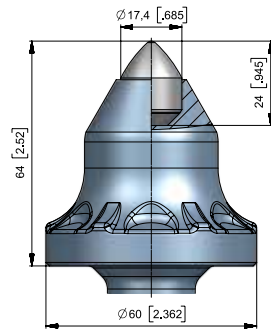
► SHANK SYSTEM – Ø 25 MM/1"
GAUGE 64 MM/2,5"



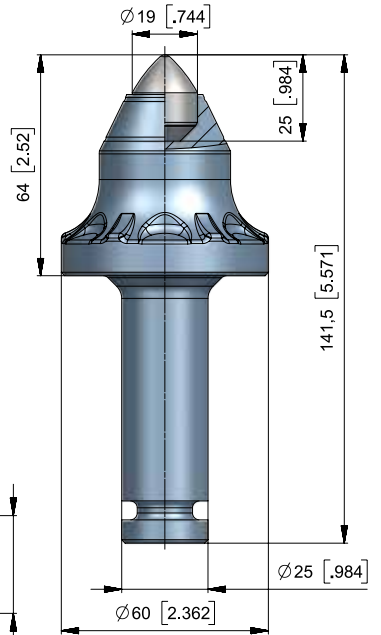
• **BTK114**
BG25F-12.6064



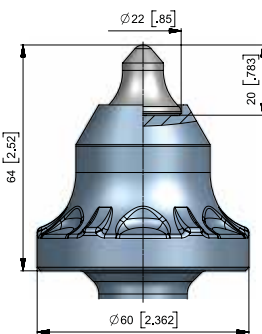
• **BTK120**
BG25F-15.6064



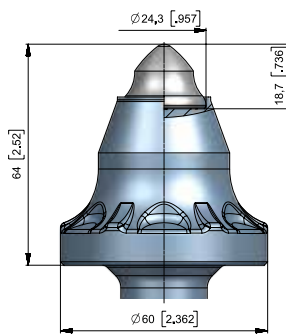
BTK121
BG25F-17.6064



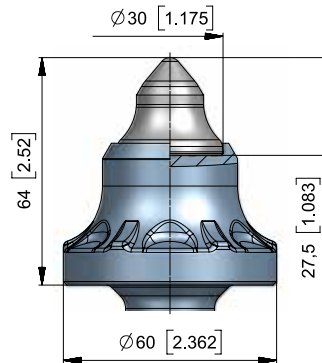
BTK122
BG25F-19.6064



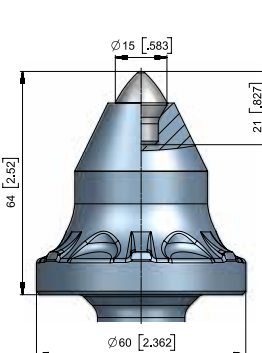
BTK123
BG25F-67.6064



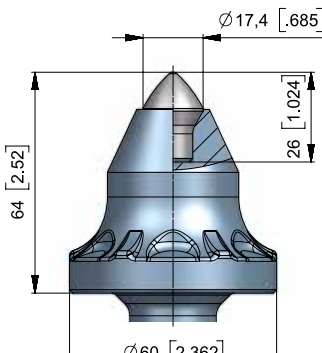
BTK124
BG25F-68.6064



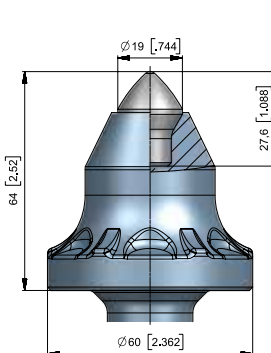
BTK125
BG25F-69.6064A



• **BTK151**
BG25F-76.6064

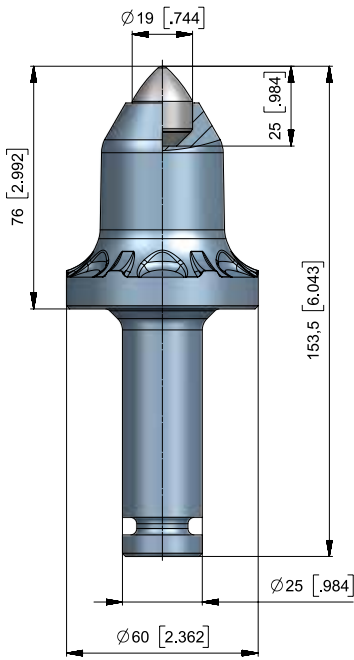


• **BTK150**
BG25F-70.6064

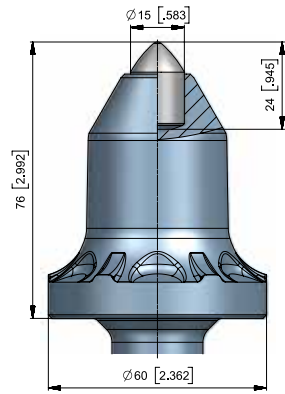


BTK143
BG25F-72.6064

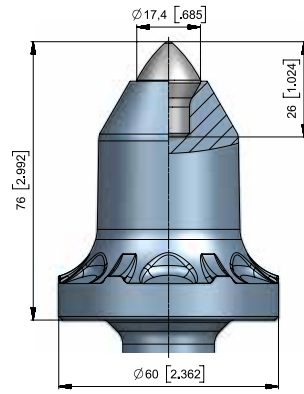
► SHANK SYSTEM – Ø 25 MM/1"
GAUGE 76 MM/3,0"



• **BTK127**
BG25F-19.6076



• **BTK113**
BG25F-15.6076

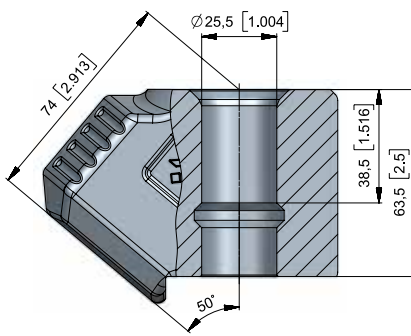



• **BTK126**
BG25F-70.6076

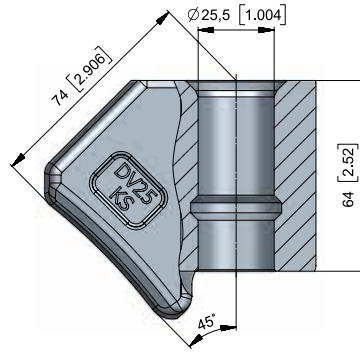


ROUND SHANK CUTTER BITS

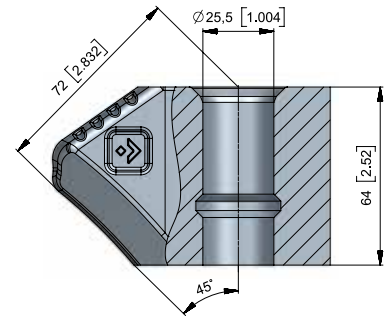
> SHANK SYSTEM – Ø 25 MM/1"



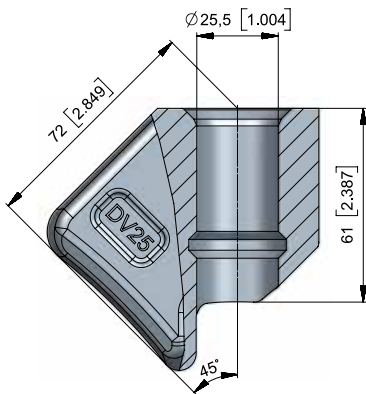
• **BHR186**
B25.6750  8



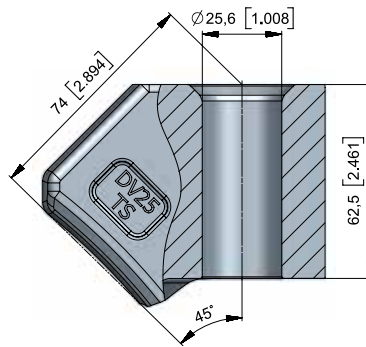
• **BHR121**
DV25KS  10



• **BHR34**
DV40VS  10

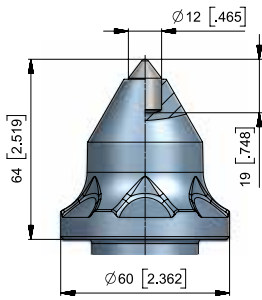


• **BHR31**
DV25  15

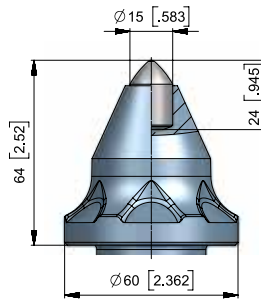


• **BHR145**
DV25TS  10

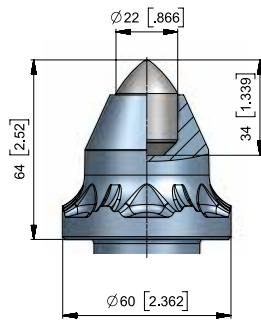
► SHANK SYSTEM – Ø 38/30 MM-1,5/1,18" GAUGE 64 MM/2,5"



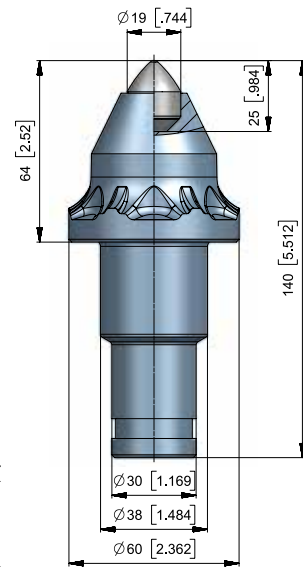
■ BKS165
BS38W-12.6064A



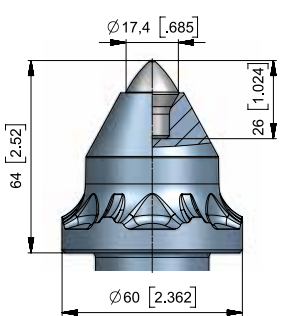
■ BKS144
BS38W-15.6064



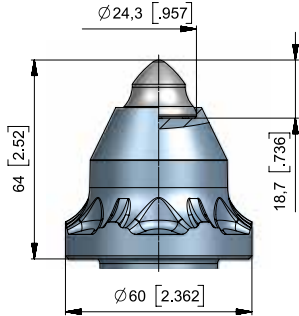
■ BKS162
BS38W-22.6064



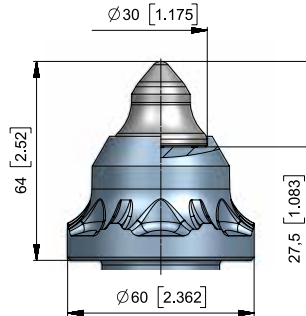
■ BKS151
BS38W-19.6064



■ BKS163
BS38W-70.6064

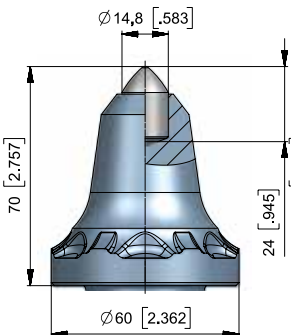


■ BKS160
BS38W-68.6064

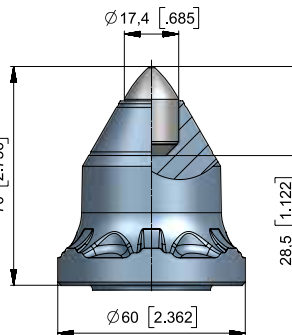


■ BKS161
BS38W-69.6064

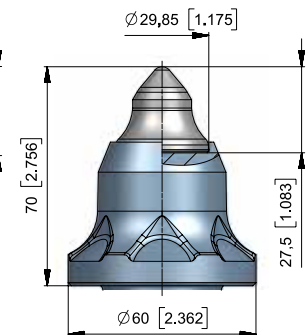
► SHANK SYSTEM – Ø 38/30 MM-1,5/1,18" GAUGE 70 MM/2,75"



■ BKS168
BS38W-15.6070



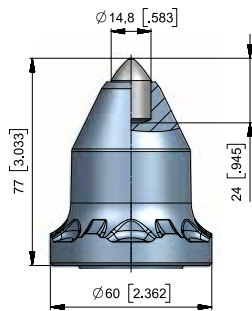
■ BKS166
BS38W-17.6070



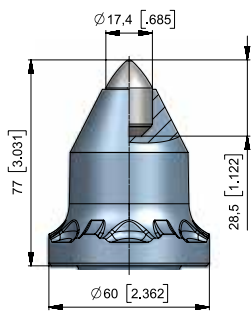
■ BKS167
BS38W-69.6070A

ROUND SHANK CUTTER BITS

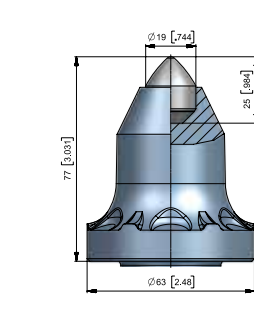
► SHANK SYSTEM – Ø 38/30 MM-1,5/1,18" GAUGE 77 MM/3,0"



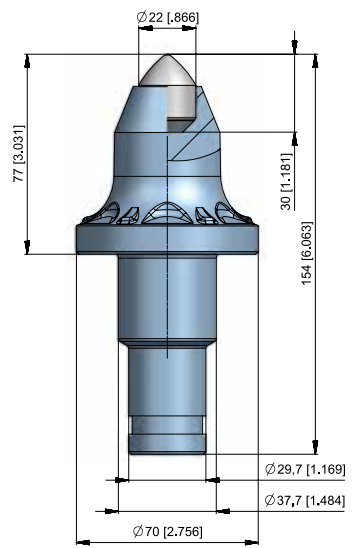
• **BKS169**
BS38W-15.6077A



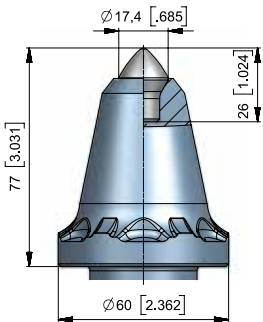
• **BKS171**
BS38W-17.6077



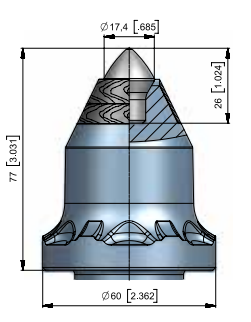
• **BKS172**
BS38W-19.6377



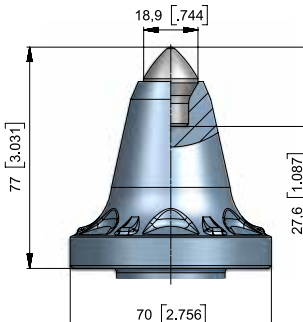
• **BKS170**
BS38W-22.6377



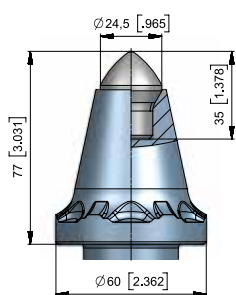
• **BKS174**
BS38W-70.6077



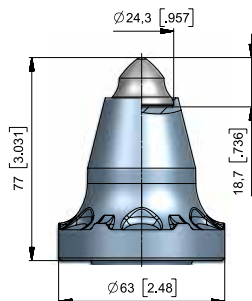
• **BKS193**
BS38W-70.6077P



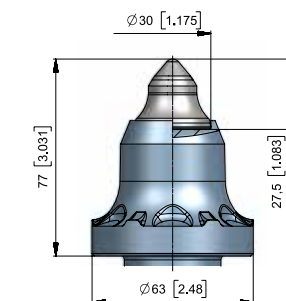
• **BKS175**
BS38W-72.6077



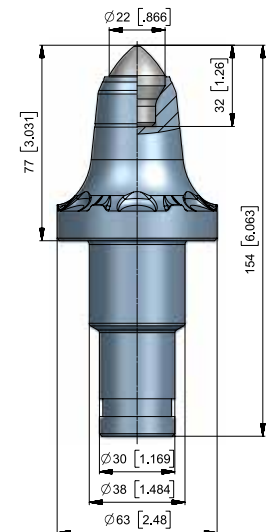
• **BKS176**
BS38W-71.6077



• **BKS178**
BS38W-68.6377



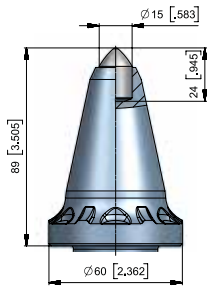
• **BKS177**
BS38W-69.6377



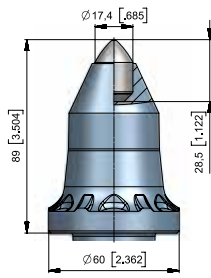
• **BKS158**
BS38W-73.6077



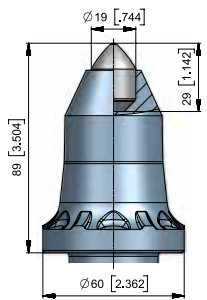
► SHANK SYSTEM – Ø 38/30 MM-1,5/1,18" GAUGE 89 MM/3,5"



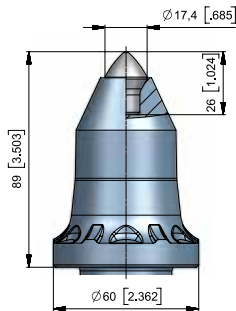
■ **BKS179**
BS38W-15.6089



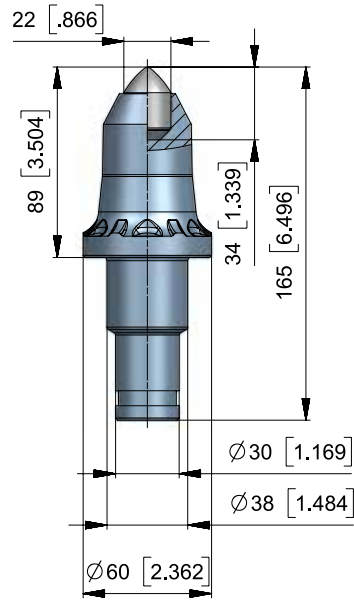
■ **BKS180**
BS38W-17.6089



■ **BKS181**
BS38W-19.6089



■ **BKS182**
BS38W-70.6089

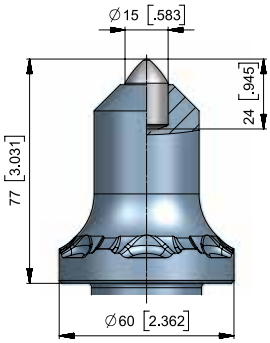


■ **BKS183**
BS38W-22.6089

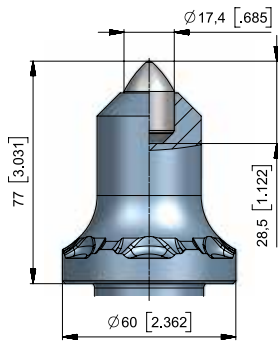


ROUND SHANK CUTTER BITS

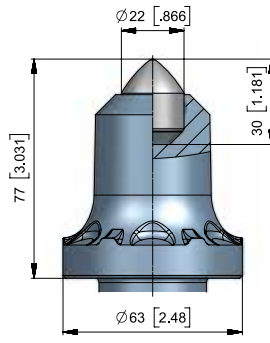
► SHANK SYSTEM – Ø 38/30 MM-1,5/1,18"
GAUGE 77 MM/3,0"



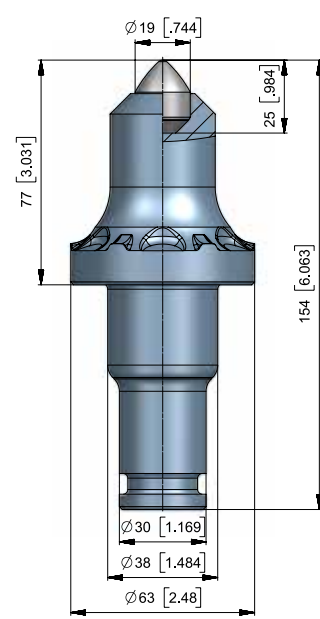
• **BKF32**
BS38F-15.6077



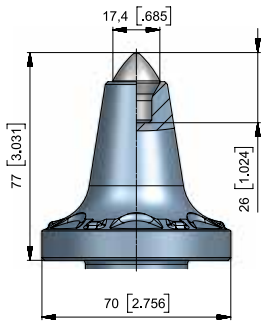
• **BKF33**
BS38F-17.6077



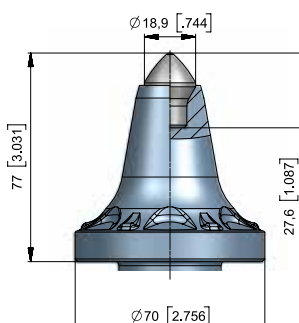
• **BKF31**
BS38F-22.6377



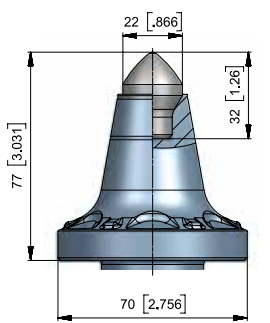
• **BKF30**
BS38F-19.6377



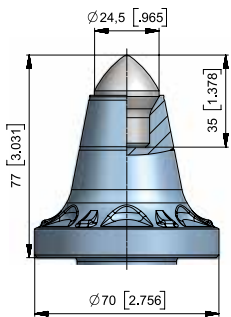
• **BKF40S**
BS38F-70.6377S



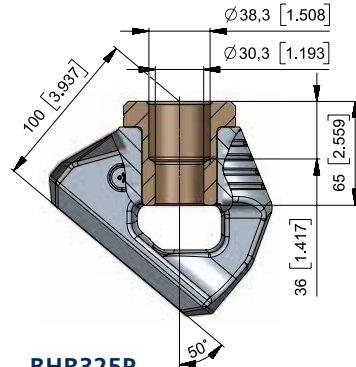
• **BKF39S**
BS38F-72.6377S



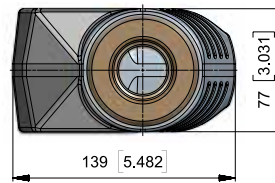
• **BKF38S**
BS38F-73.6377S



• **BKF36S**
BS38F-71.6377S

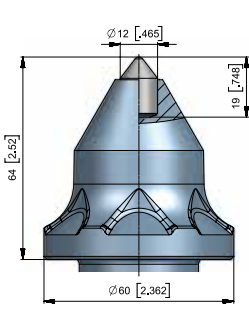


• **BHR325P**
B3830.7750-B

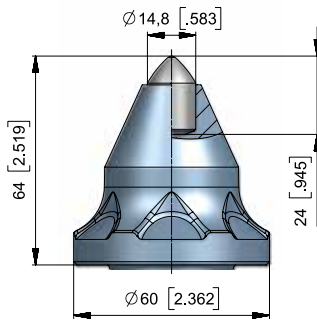


ROUND SHANK CUTTER BITS

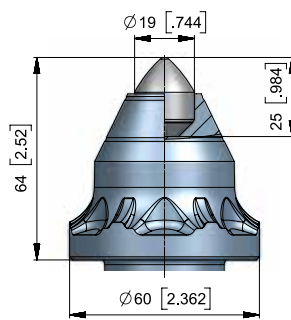
► SHANK SYSTEM – Ø 38/30 MM-1,5/1,18"
GAUGE 64 MM/2,5"



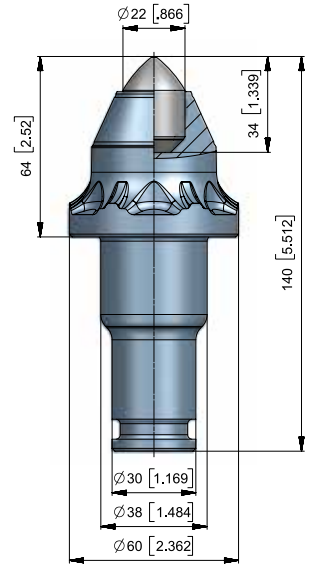
• BKF27
BS38F-12.6064



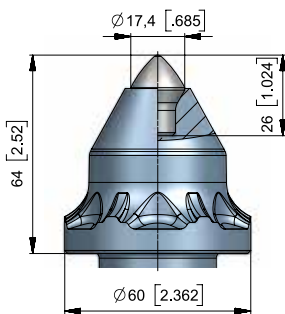
• BKF24
BS38F-15.6064



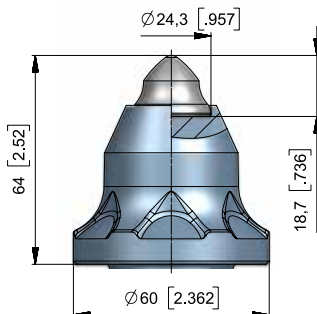
• BKF22
BS38F-19.6064



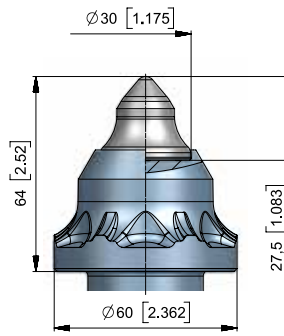
• BKF26
BS38F-22.6064



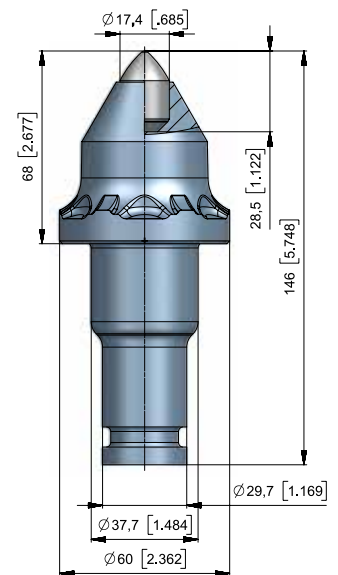
• BKF25
BS38F-70.6064



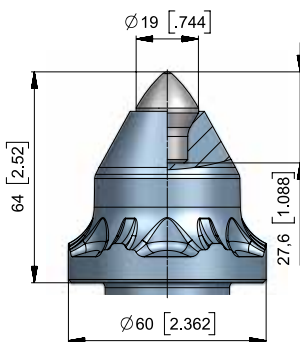
• BKF28
BS38F-68.6064



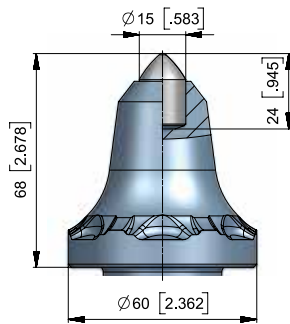
• BKF29
BS38F-69.6064



• BKF63
BS38F-17.6068

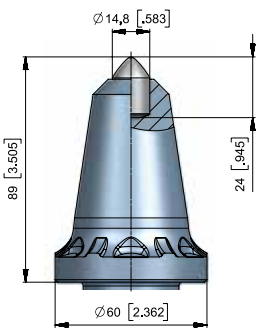


• BKF65
BS38F-72.6064

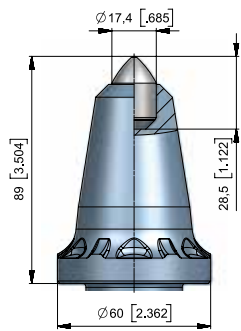


• BKF62
BS38F-15.6068

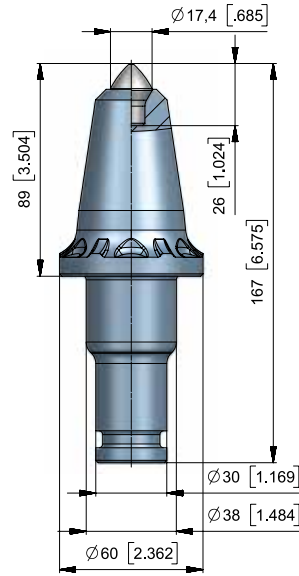
► SHANK SYSTEM – Ø 38/30 MM-1,5/1,18" GAUGE 89 MM/3,5"



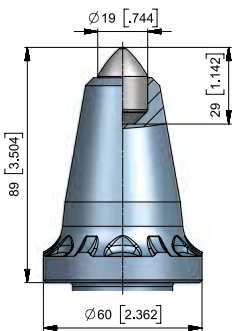
• BKF41
BS38F-15.6089



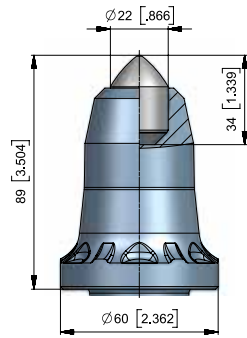
• BKF42
BS38F-17.6089



• BKF45
BS38F-70.6089



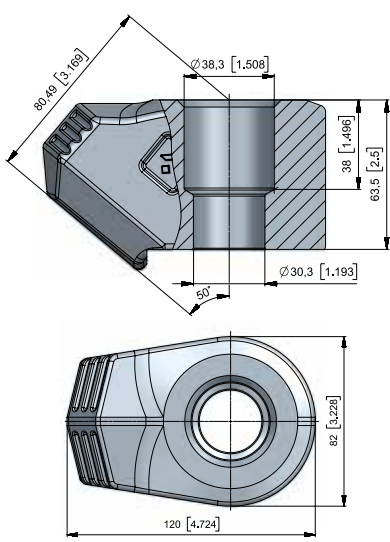
• BKF43
BS38F-19.6089



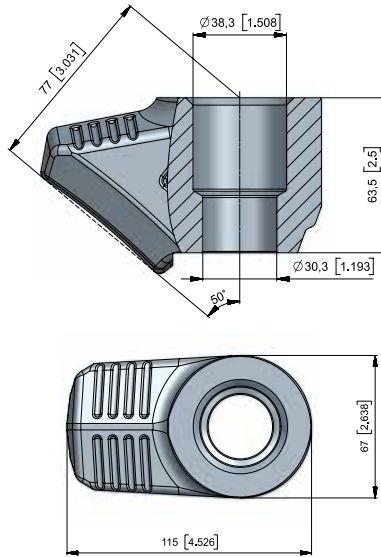
• BKF44
BS38F-22.6089



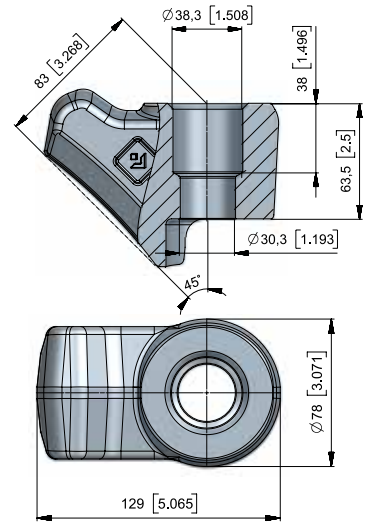
► SHANK SYSTEM – Ø 38/30 MM-1,5/1,18"



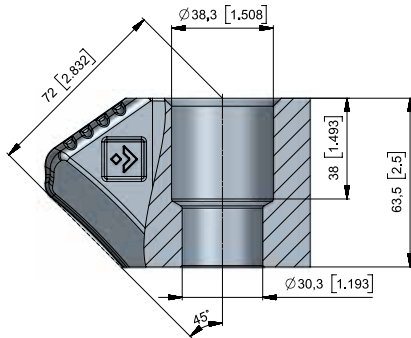
■ **BHR187**
B3830.8250 



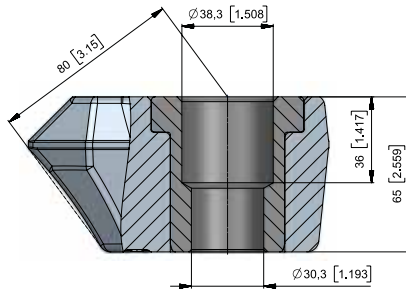
■ **BHR188**
B3830.6750 



■ **BHR204**
B3830.7845 



■ **BHR38**
B43H 



■ **BHR417**
B3830.8536-B 

ACCESSORIES



■ **BZ44**
Bit extractor for BM Series



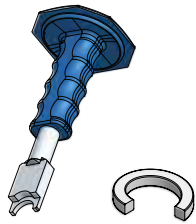
■ **BZ42**
Bit extractor for BSH and BC-Series



■ **BZ43**
Bit extractor for BSH, BC and BSK-Series



■ **BZ38**
Wedge puller for shaft diameter 20-25



■ **BZ33**
Assembly tool for SI36



■ **BZ31**
Disassembly tool for SI36



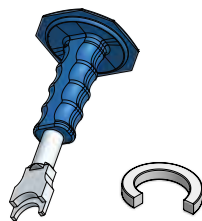
■ **BZ41**
Assembly tool for SI26



■ **BZ32**
Disassembly tool for SI26



■ **BZ22**
Bit puller for BTK-Series



■ **BZ37**
Assembly tool for SI216



■ **BZ36**
Disassembly tool for SI216



■ **BZ05**
Bit puller for head diameter 60

ACCESSORIES



■ **BZ35**
Assembly tool for SI239



■ **BZ34**
Disassembly tool for SI239



■ **BZ39**
Wedge puller for shaft diameter 30-38



■ **SRZ02**
Plier for SR83/1, SR81, SR65, SR61, SR56 and SR54



■ **BZ12**
Bit puller for BKH-Series



■ **BZ18**
Bit puller with copper disk for BKH-Series



■ **BZ16**
Bit extractor for Roll pin with diameter 10



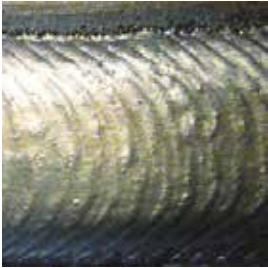
■ **BZ30**
Bit extractor for Roll pin with diameter 16



■ **BZ40**
Wedge puller for stepshank 43/35

FLEXIBLE WEAR PROTECTION

► BeCoat® HARDFACING TYPES



FeCr
hardfacing



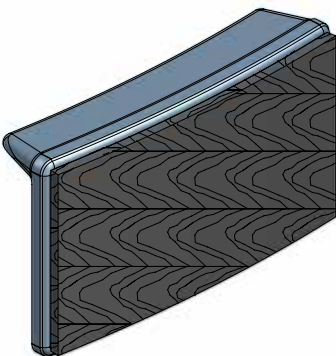
NiCr + FTC
hardfacing



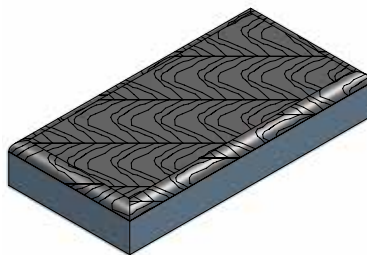
TC grit
hardfacing

► BeCoat® ADVANTAGES

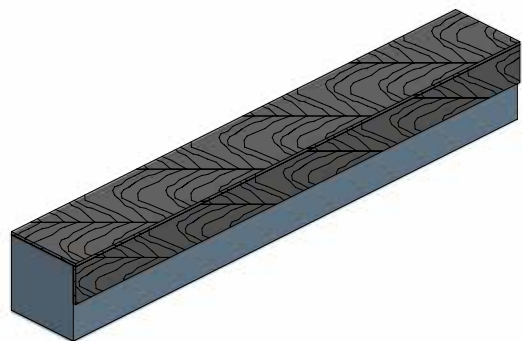
- Cost reduction due to less downtime
- Coating thickness ≤ 6mm
- Evenly distributed fused tungsten carbide (FTC) and low dilution
- Engineering and consulting
- Proven to withstand even the harshest environments



▪ **BA73**
BA72x40x17 |  50



▪ **BBM386**
BBM100x50x16 |  25



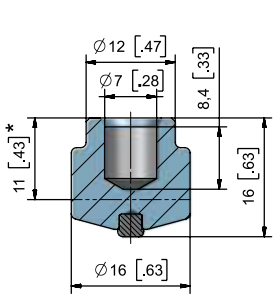
▪ **BBM391**
BBM180x26x26 |  25

EXTENSIVE WEAR PROTECTION

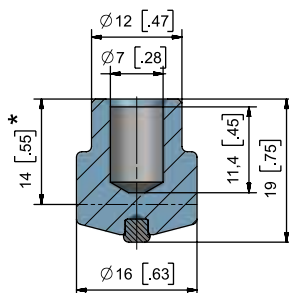


► OVERVIEW

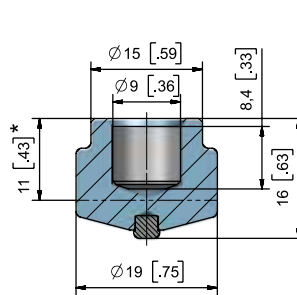
BETEK can provide the appropriate stud welding machine for the TungStuds wear protection system.



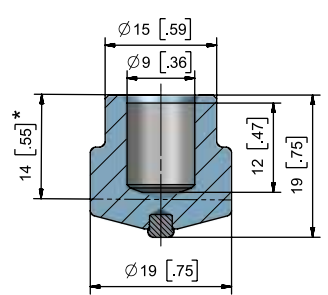
■ **BTS01** BTSD16/16



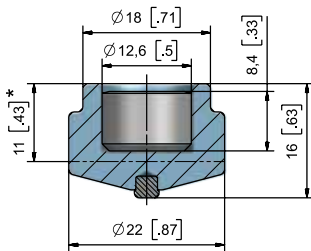
■ **BTS02** BTSD16/19



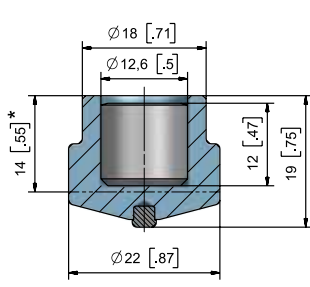
■ **BTS03** BTSD19/16



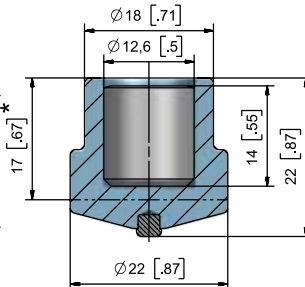
■ **BTS04** BTSD19/19



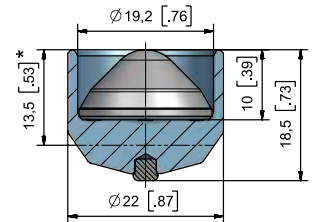
■ **BTS05** BTSD22/16



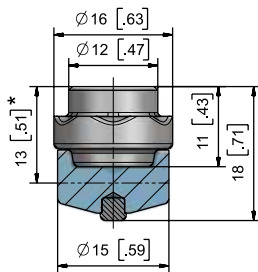
■ **BTS06** BTSD22/19



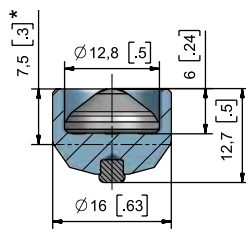
■ **BTS07** BTSD22/22



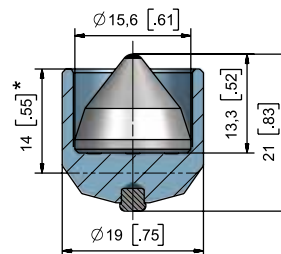
■ **BTS08** BTSD22/18,5SG



■ **BTS10B** BTSD16/18B



■ **BTS20** BTSD16/12,5SG



■ **BTS100** BTSD19/15,6SG



*Height after welding

PERFORMANCE

> CUTTING WEAR PROTECTION

- Grid pattern is recommended
- Cutting wear protection due to the conical carbide shape

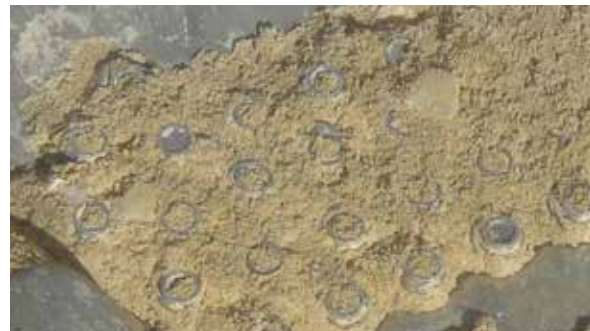
EXTENSIVE WEAR PROTECTION



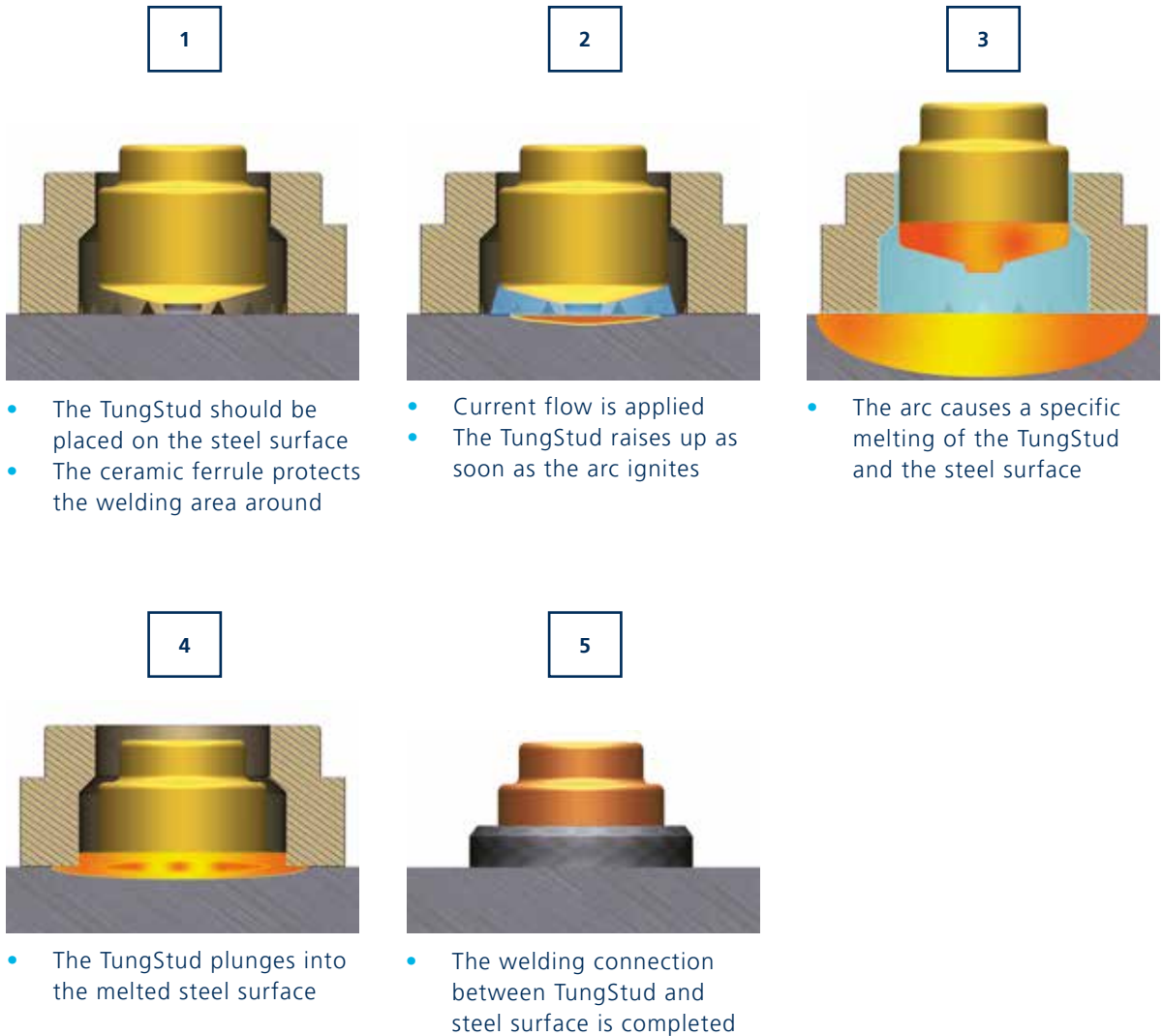
> ROCK BOX EFFECT

- Grid pattern is recommended
- Rock Box Effect due to the cylindrical carbide shape

EXTENSIVE WEAR PROTECTION



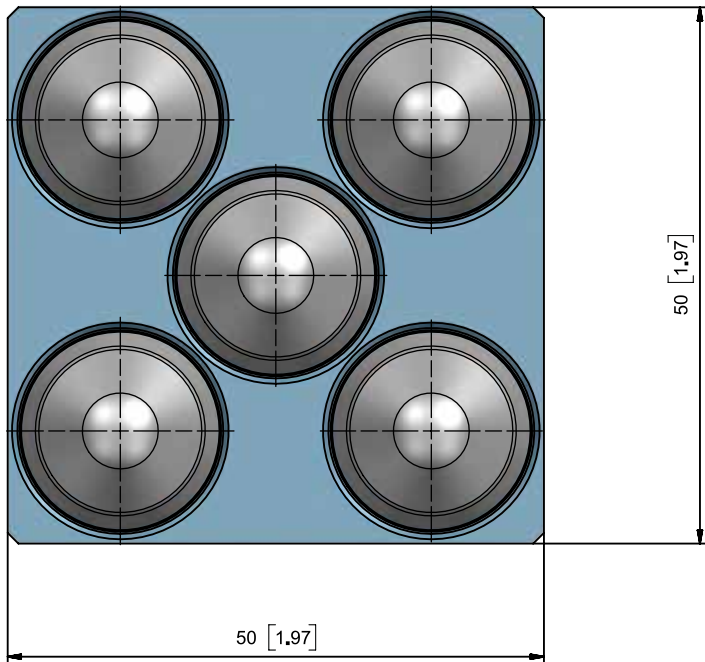
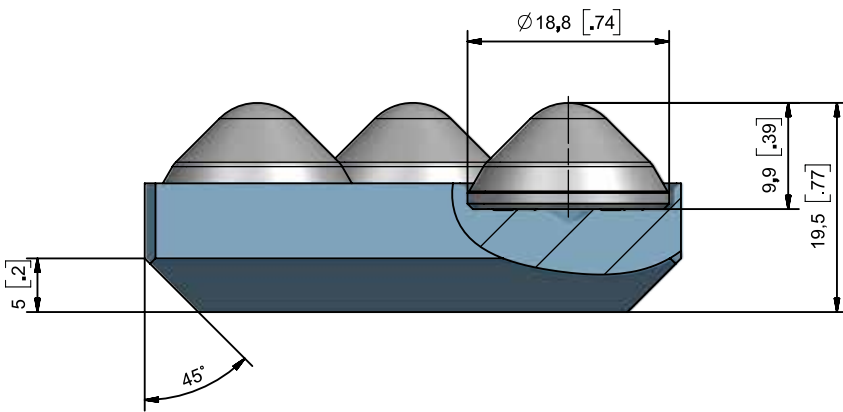
EXTENSIVE WEAR PROTECTION



BENEFITS

- Wear resistant thanks to the carbide core
- Quick welding process
- Suitable for uneven surfaces
- Simply replaceable
- Less maintenance > Higher productivity
- Less downtime > Cost reduction

► **BTS-PLATES**



DIMENSIONS

Width in mm	Length in mm
50	50
75	75
100	100
125	125
150	150

Other sizes on request

APPLICATION





➔ BETEK



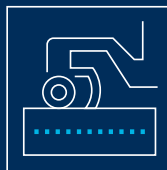
SURFACE TECHNOLOGIES

- ROAD MILLING
- SURFACE MINING
- STABILISING



UNDERGROUND TECHNOLOGIES

- FOUNDATION DRILLING
- MINING
- TRENCHING
- TUNGSTUDS
- DRUM CUTTERS



ENVIRONMENTAL TECHNOLOGIES

- AGRICULTURE
- GRADER TOOLS
- FORESTRY & RECYCLING



INDUSTRIAL TECHNOLOGIES

- CRUSHING & MIXING
- TUNGSTEN CARBIDE
- RAIL TRACK CONSTRUCTION
- INDUSTRIAL SOLUTIONS



➔ SITEK A BETEK BRAND

- TIRE STUDS
- SCARIFIER CUTTERS
- POLE TIPS
- HORSESHOE TIPS



Service number
+49 (0) 7422. 565-0

info@betek.de
www.betek.de